
P-SCANNER

Version: 1.2.2.0

User Guide



DataZen Engineering

5 West Hargett Street, Suite 200
Raleigh, North Carolina 27601
USA
support@dataZenEngineering.com

TABLE OF CONTENTS

1 INTRODUCTION 5

1.1 ABOUT P-SCANNER 5

1.2 ORGANIZATION OF THE MANUAL 6

2 INSTALLATION 7

2.1 SYSTEM REQUIREMENTS 7

2.2 INSTALLATION PROCESS 7

2.3 CONFIRM INSTALLATION 17

2.4 UN-INSTALLATION PROCESS 18

3 USING P-SCANNER 20

3.1 SCANNING THE BARCODE 20

3.2 ABOUT P-SCANNER 23

4 ADMINISTRATING P-SCANNER 24

4.1 .MIN FILE(S) CONFIGURATION 25

 4.1.1 *On the Local Machine* 25

 4.1.2 *On the Server/Networked Machine* 27

4.2 SETTING UP THE CONFIGURATION FILE 34

5 LICENSE 36

5.1 CHECK VALIDITY 36

5.2 GET LICENSE 37

5.3 LOAD LICENSE 38

6 TERMS AND CONDITIONS 39

7 TECHNICAL SUPPORT 46

TABLE OF FIGURES

Figure 1: Main Page	5
Figure 2: Installation Steps-1.....	7
Figure 3: .Net 4.0 Framework Installation.....	8
Figure 4: THINC Startup- Installation Wizard.....	8
Figure 5: THINC Startup Installation- Create Desktop and Vertical Key.....	9
Figure 6: THINC Startup Installation-Select THINC Startup Service Folder.....	9
Figure 7: THINC Startup Installation-Confirm Installation	10
Figure 8: THINC Startup Installation- Installation in process.....	10
Figure 9: THINC Startup Installation- Installation Complete.	11
Figure 10:Begin Installation	11
Figure 11: Installation Process	12
Figure 12: Read-Me Information.....	12
Figure 13: Select Installation Location.....	13
Figure 14:Follow Installation Wizard.....	13
Figure 15: Follow Installation Wizard-1	14
Figure 16: Machine Information.....	14
Figure 17: Installing P-SCANNER	15
Figure 18: Installation Complete	15
Figure 19: Home window of P-SCANNER.....	16
Figure 20: Launching Application 1	17
Figure 21: Launching Application 2.....	17
Figure 22: Un-installation Step-1	18
Figure 23: Un-installation -2	18
Figure 24: Un-Installation Complete	19
Figure 25: Sample Barcode value-1	20
Figure 26: Sample Barcode Value-2	20
Figure 27: Load Program	21
Figure 28: Part Program Loaded Successfully	21
Figure 29: Clear Form.....	22
Figure 30: Exit P_SCANNER	22
Figure 31: About P-SCANNER	23
Figure 32: P-SCANNER Configuration Settings	24
Figure 33: Configuring .MIN File(s) path.....	25
Figure 34: Browse for .MIN File(s) Path.....	26
Figure 35: Browse for Desired Directory for .MIN File(s) Path	26
Figure 36: .MIN File(s) Configuration-1.....	27
Figure 37: .MIN File(s) Configuration-2.....	28
Figure 38: .MIN File(s) Configuration-3.....	28
Figure 39: .MIN File(s) Configuration- On the Control-1	29
Figure 40: .MIN File(s) Configuration- On the Control-2	29
Figure 41: .MIN File(s) Configuration- On the Control-3	30
Figure 42: Configuring .MIN File(s).....	30
Figure 43: CUSTOMIZE YOUR P-SCANNER	31
Figure 44: Select .MIN File(s).....	31
Figure 45: Select Configured shared folder.....	32
Figure 46: Save the .MIN File(s) path.....	32

Figure 47: Select .MIN File(s) Path.....	33
Figure 48: Save Selected .MIN File(s) path	33
Figure 49: Setting Up Config.ini File.....	34
Figure 50: Setting up Config.ini File-1.....	34
Figure 51: Check Validity	36
Figure 52: License Info.....	37
Figure 53: Get License	37
Figure 54: Load License	38
Figure 55: License Valid	38

1 Introduction

1.1 About P-SCANNER

dataZen P-SCANNER provides an Okuma P100 II/P200/ P300 control user with the ability to scan a barcode and load the associated part program automatically in P-SCANNER from the code .MIN File(s) path either from local machine folder or from over the network.

When the barcode is successfully scanned, the associated program details are populated on the screen and saved to 'P-SCANNERLog.txt' file in the application directory. Now the program is loaded from the set .MIN File(s) and is ready to run on the control.

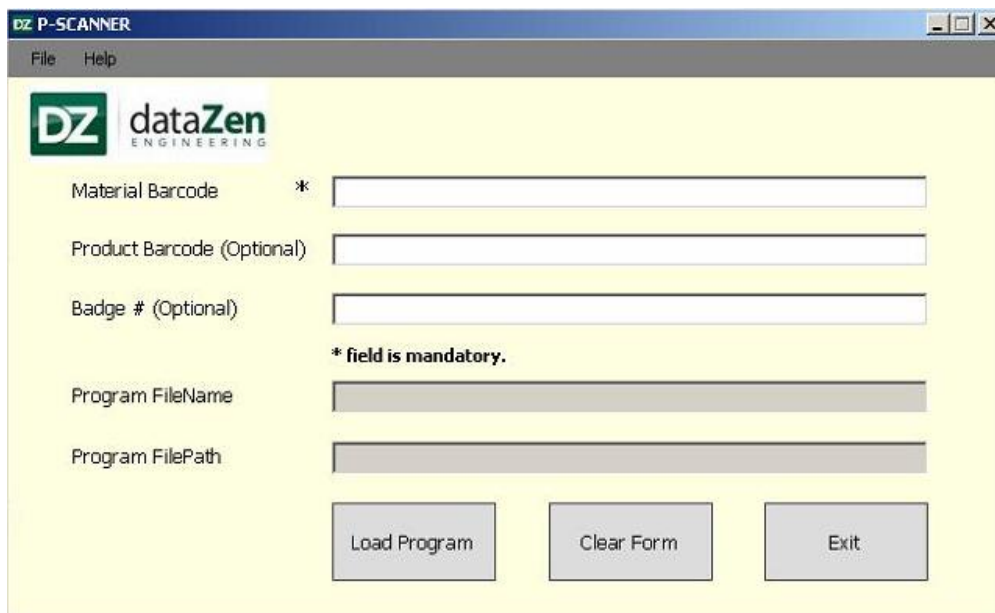


Figure 1: Main Page

1.2 Organization of the Manual

The purpose of this document is to help the users install, navigate and maintain the application described above. The document has the following sections.

[Section2:Installation](#)

This section covers, Installation Process, Un-Installation Process.

[Section3:Using P-SCANNER](#)

This section covers each User Interface for each feature, along with actions, if any, that can be performed by regular user of the application.

[Section 4: Administrating P-SCANNER](#)

This section covers each User Interface for each feature, along with actions, if any, that can be performed by an administrator of the application.

[Section5:License](#)

This section covers the license information.

[Section6:TechnicalSupport](#)

This section covers technical support details.

2 Installation

The topics in this section provide step by step information to install P-SCANNER.

2.1 System Requirements

The following system requirements must be met in order to install P-SCANNER:

- P100 II/P200/ P300control
- THINC API (Lathe or Machining Center) Version 1.12.1.0 OR 1.15.0.0 OR 1.17.2.0.
- NET 4.0 and above
- OKUMA THINC Startup Service

Note: Not all versions of THINC API are currently supported. If you receive an error while running this application, please contact dataZen. We can provide a plug-into enable support for your version of THINCAPI.

To use the application, as intended, a Barcode Scanner (device) is also required.

2.2 Installation Process

1. To run the software in windows-only mode, follow below steps.

- Restart the computer.
- When the NC software starts hitting the escape key and then hit cancel



Figure 2: Installation Steps-1

Note: It is recommended that you install the application in windows-only mode. If you install the application in NC Mode, please restart the control when possible, to have

the VF-KEY shortcut display for quick access.

2. Open the P-SCANNER installation folder and click on “Setup.exe” to begin installation and follow the steps provided in the Setup Wizard.
3. If any of the prerequisite is not installed on the machines setup will install those prerequisites and continue with the P-SCANNER Installation.

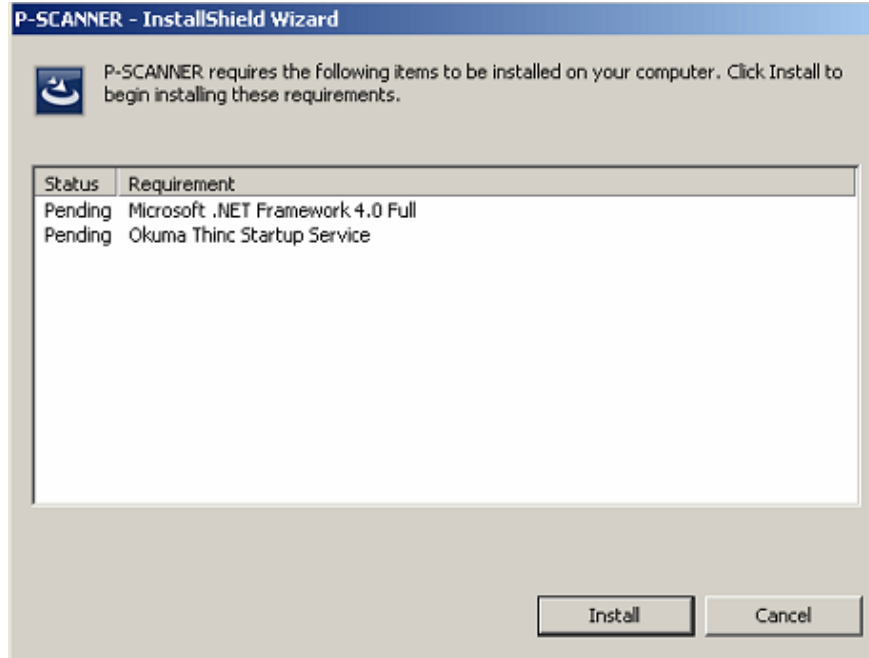


Figure 3: .Net 4.0 Framework Installation



Figure 4: THINC Startup- Installation Wizard

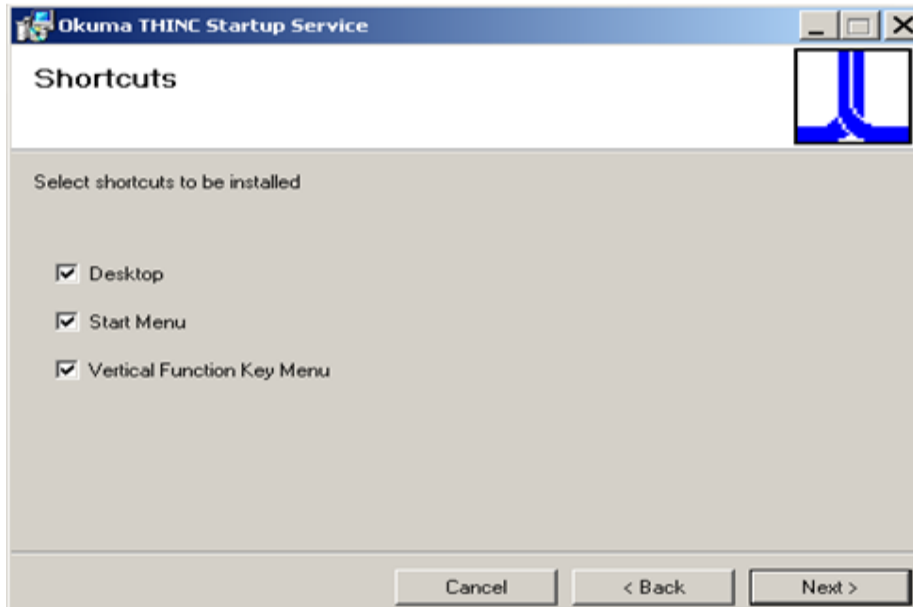


Figure 5: THINC Startup Installation- Create Desktop and Vertical Key

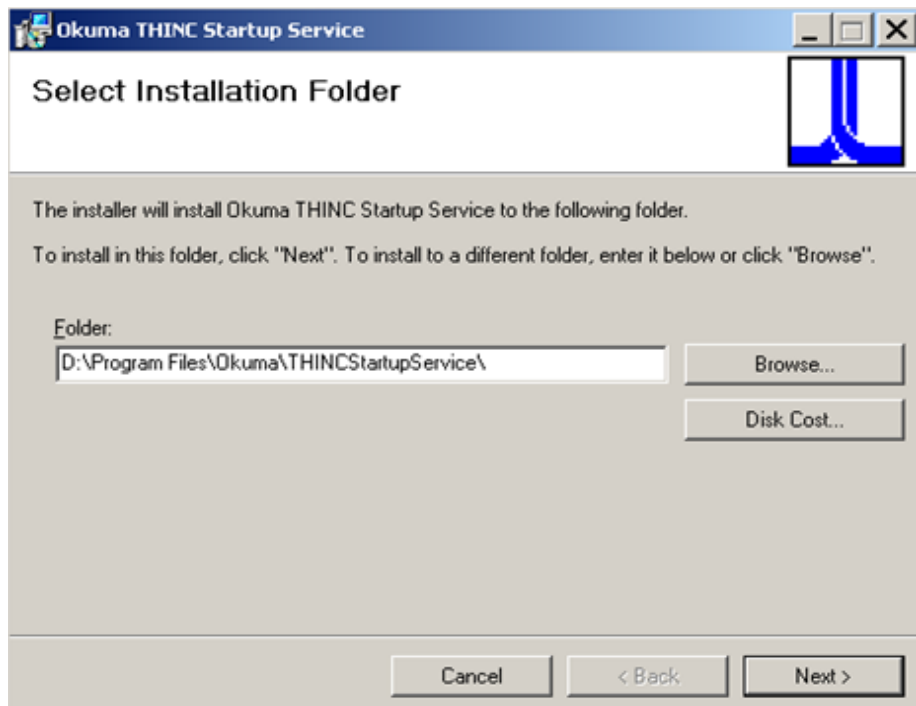


Figure 6: THINC Startup Installation-Select THINC Startup Service Folder

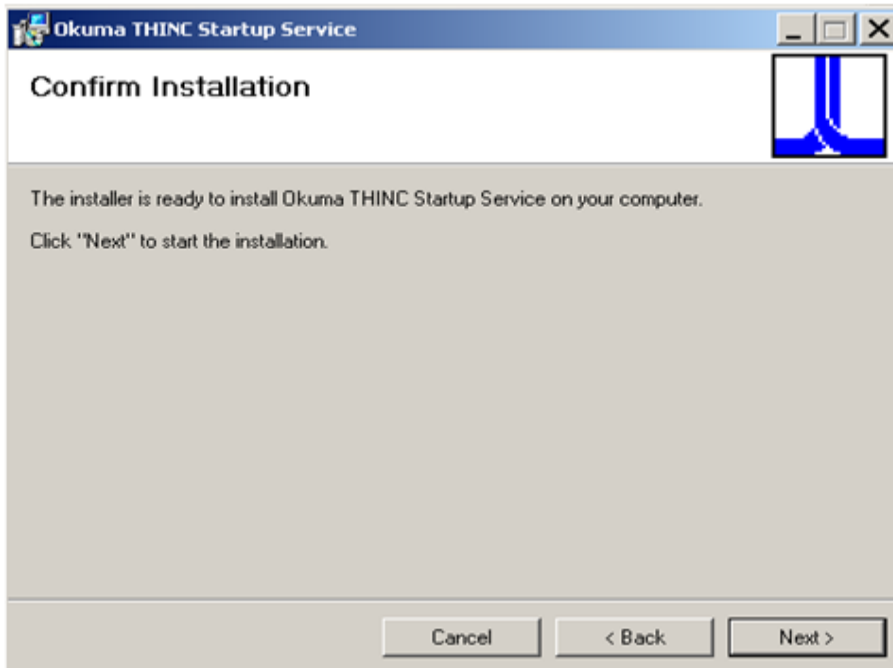


Figure 7: THINC Startup Installation-Confirm Installation

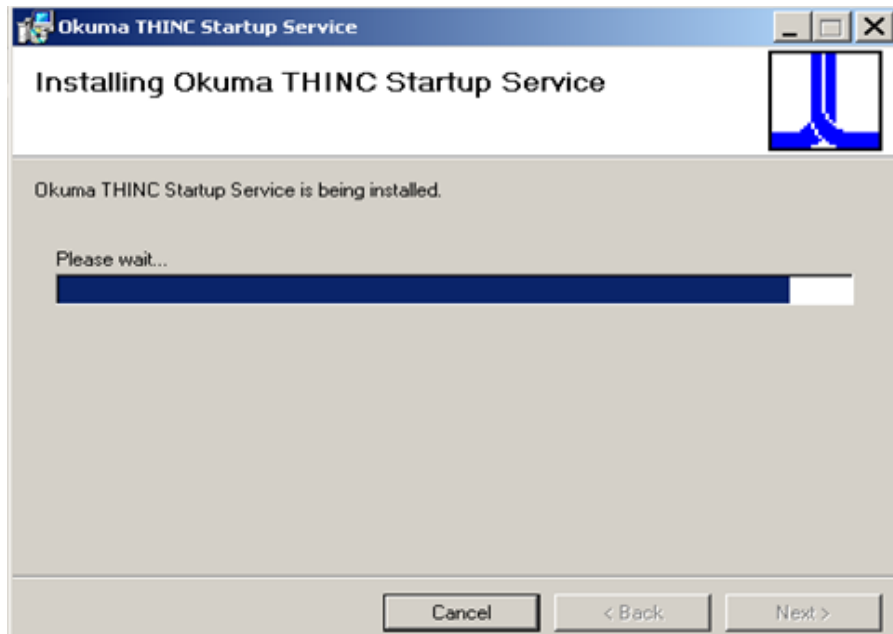


Figure 8: THINC Startup Installation- Installation in process

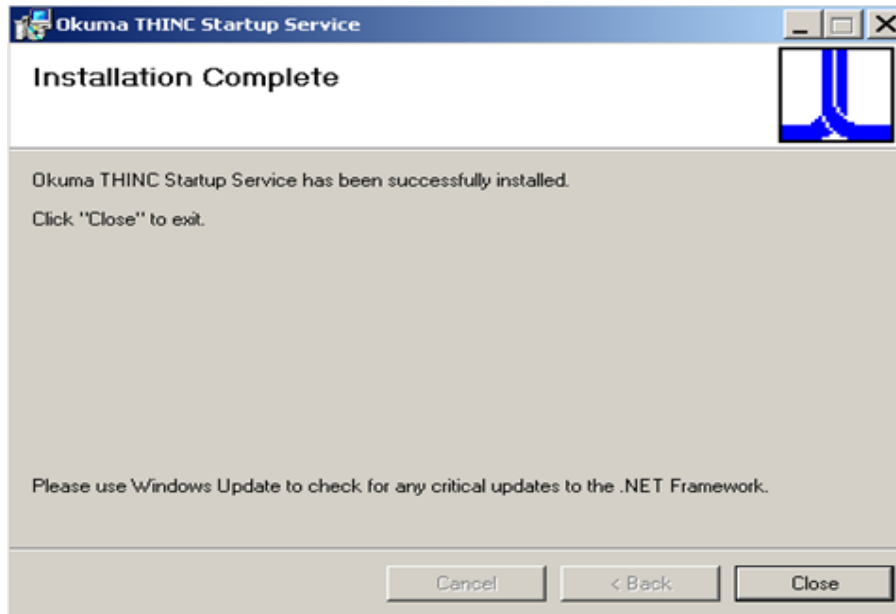


Figure 9: THINC Startup Installation- Installation Complete.

4. Once the Okuma THINC Startup is installed successfully setup will continue with Microsoft .NET Framework 4.0
5. Once the P-SCANNER setup wizard is open click on “Next” and begins with the Installation.



Figure 10:Begin Installation

6. Follow the installation wizard and read the warning carefully given on the installation wizard and click on “Next”.



Figure 11: Installation Process

7. Please read the Read me information and click on “Next”

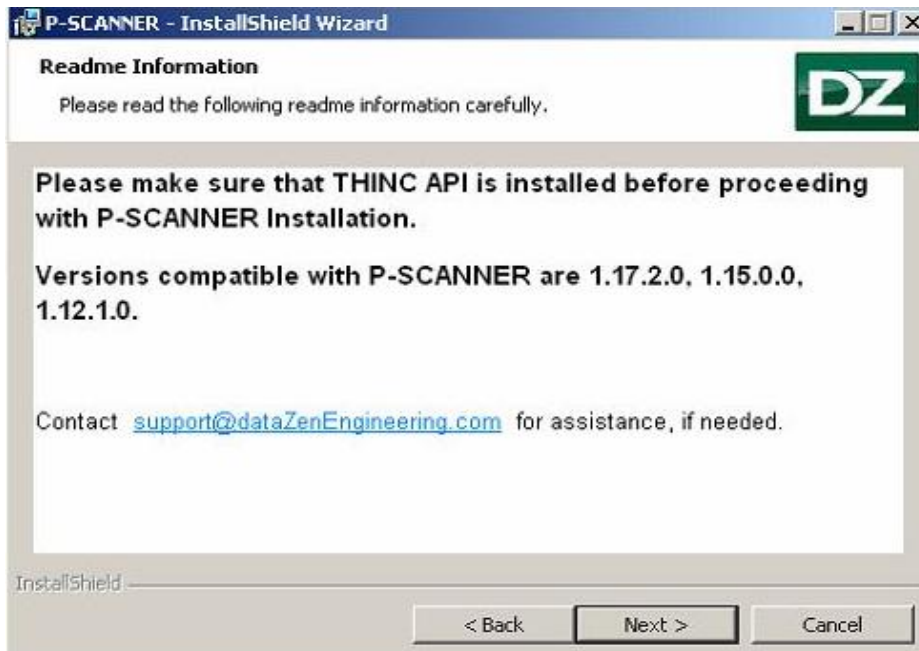


Figure 12: Read-Me Information

8. Select the default installation location path or give the desired location path by clicking on “Change” and click on “Next”.



Figure 13: Select Installation Location

Note: Default Path is set to 'D:\Program Files\dataZen\P-SCANNER\'

9. Read the information and click on “Install”.

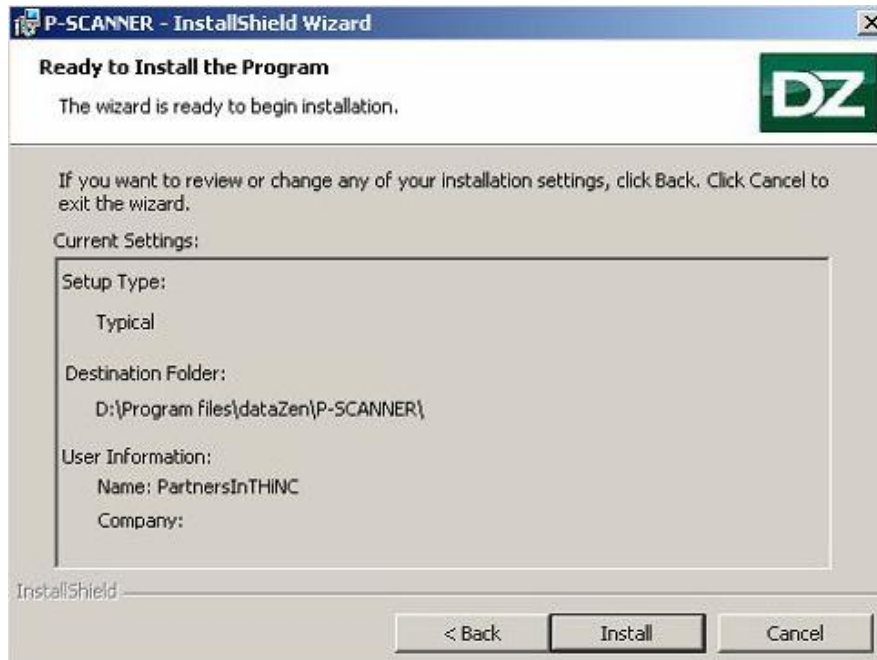


Figure 14: Follow Installation Wizard

10. Follow the installation wizard.



Figure 15: Follow Installation Wizard-1

11. Read the given information and click on “Next”.

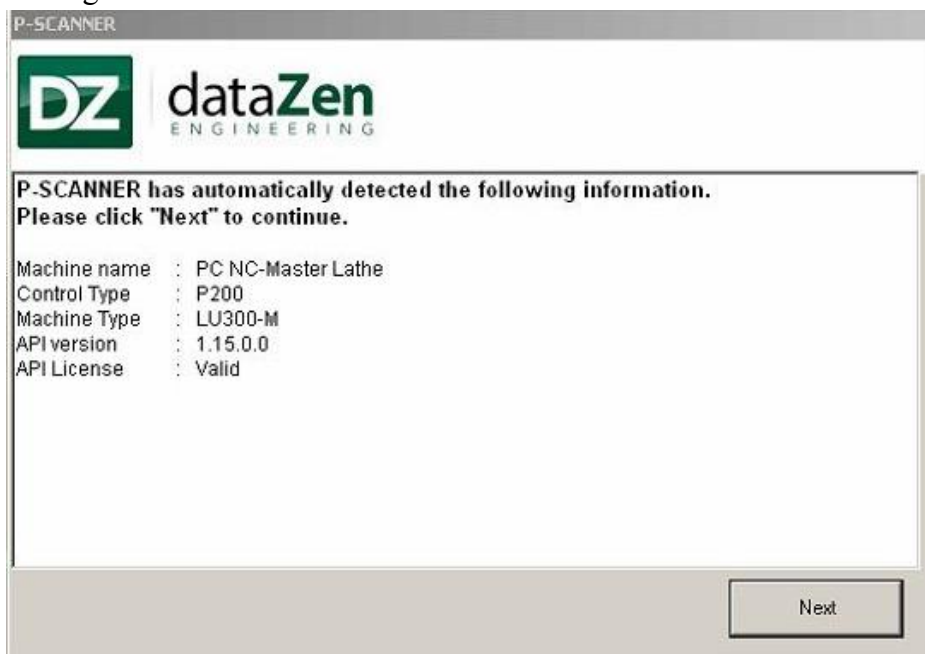


Figure 16: Machine Information

12. Follow the installation wizard to complete the installation process.



Figure 17: Installing P-SCANNER

13. Click on “Finish” to complete the installation.



Figure 18: Installation Complete

14. After the successful installation of P-SCANNER, home window of P-SCANNER is populated.

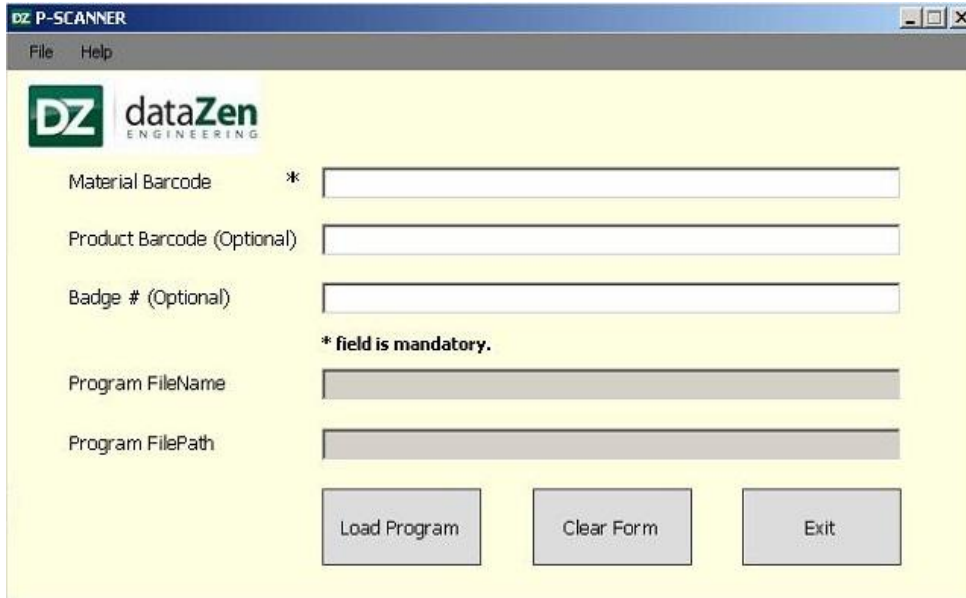


Figure 19: Home window of P-SCANNER

*Note: Two sample program files (**DZSample1.min** and **DZSample2.min**) are added to the config.ini file to test the P-SCANNER application. For more details about using P-SCANNER, please refer to [Section 3](#) and [Section 4](#).*

2.3 Confirm Installation

Before launching the application, please confirm that the control is in NC Mode.

Note: If the application was installed in NC Mode, control needs to be restarted for the VF-Key shortcut to be displayed.

1. Click on VF-Key option and click on “P-SCANNER”

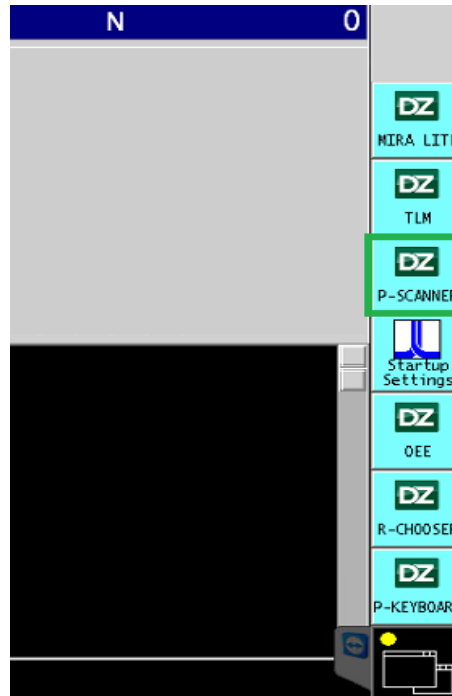


Figure 20: Launching Application 1

2. Go to Start→All Programs→dataZen→P-SCANNER→P-SCANNER to launch the application.

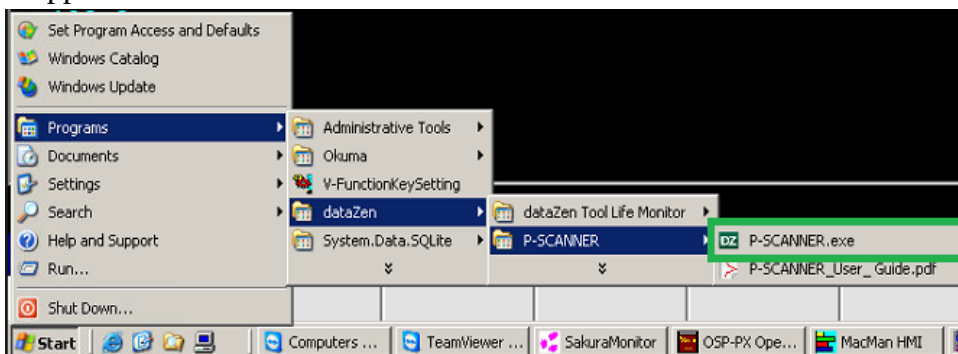


Figure 21: Launching Application 2

Note: For the first time use, a 30 days trial license is provided. Once the trial license has expired, [please refer to Section 5](#) for licensing P-SCANNER.

2.4 Un-Installation Process

Follow the below steps to uninstall the P-SCANNER application from your system.

1. Go to Start→All Programs→Control Panel→ “Add or Remove Program”

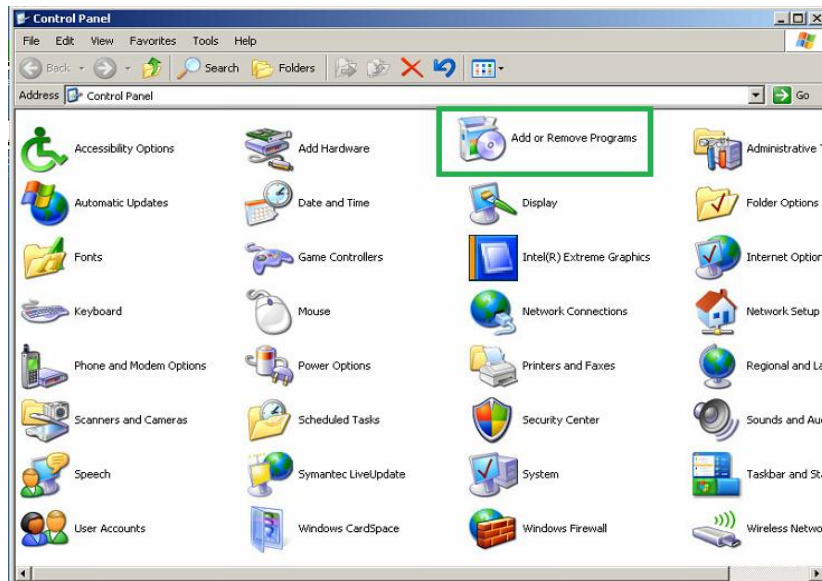


Figure 22: Un-installation Step-1

2. Select the P-SCANNER from the program list and click on “Remove”, a yes or no popup appears and then click on **Yes** to uninstall P-SCANNER.

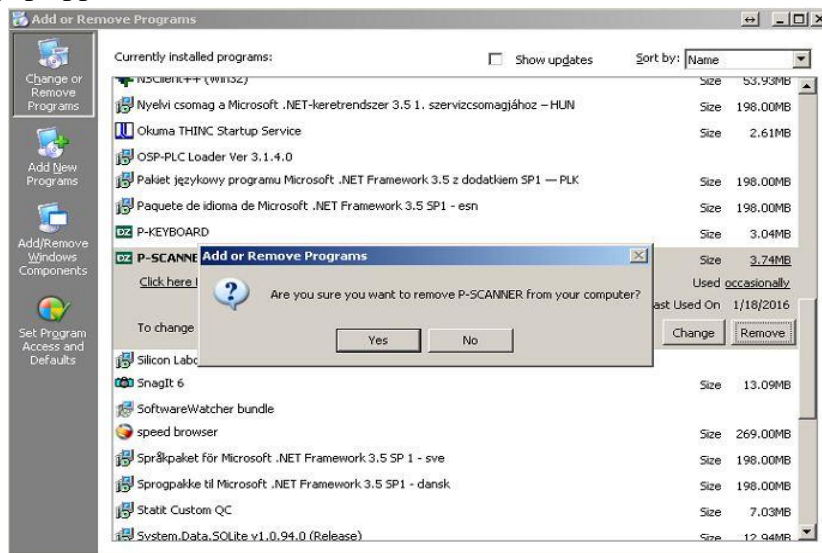


Figure 23: Un-installation -2

3. The application will get uninstalled.

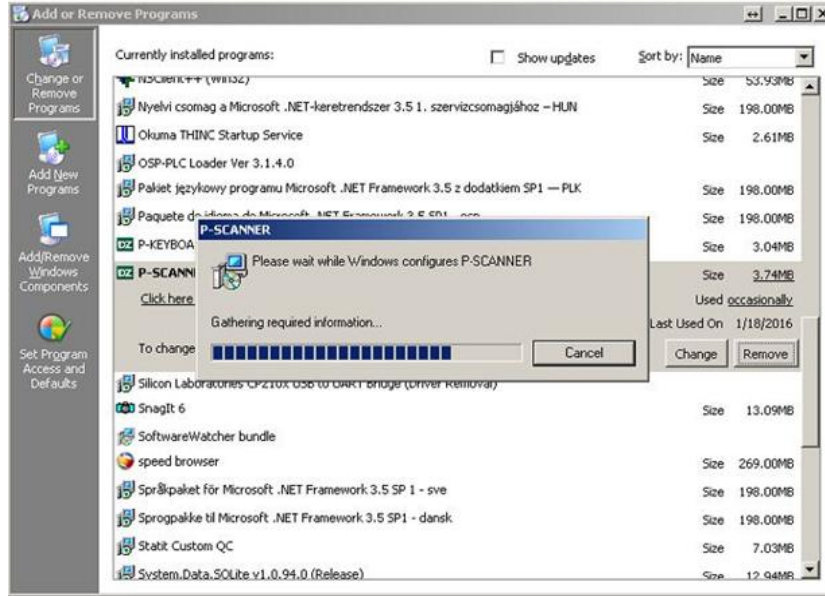


Figure 24: Un-Installation Complete

3 Using P-SCANNER

This section explains steps by step information about how to use dataZen P-SCANNER.

3.1 Scanning the Barcode

1. The “Material Barcode” value is a mandatory field(Barcode Value) and this value will be assigned to the configured part program. Use sample barcodes below to test P-SCANNER.



Figure 25: Sample Barcode value-1



Figure 26: Sample Barcode Value-2

2. In order to scan the value, cursor should be on respective field e.g. if user scanning **Material Barcode** then the cursor must be on the Material Barcode box.
3. Product Barcode and Badge # are optional fields. User may or may not scan or add details in this field.
4. User can manually type the Product Barcode and Badge #, if a barcode is not available for scanning.
5. Application will select the configured program from config.ini file, and display the program name and program path.

6. After populating the required information, click on the “**Load Program**” button. A message box is displayed to confirm the program was selected successfully.

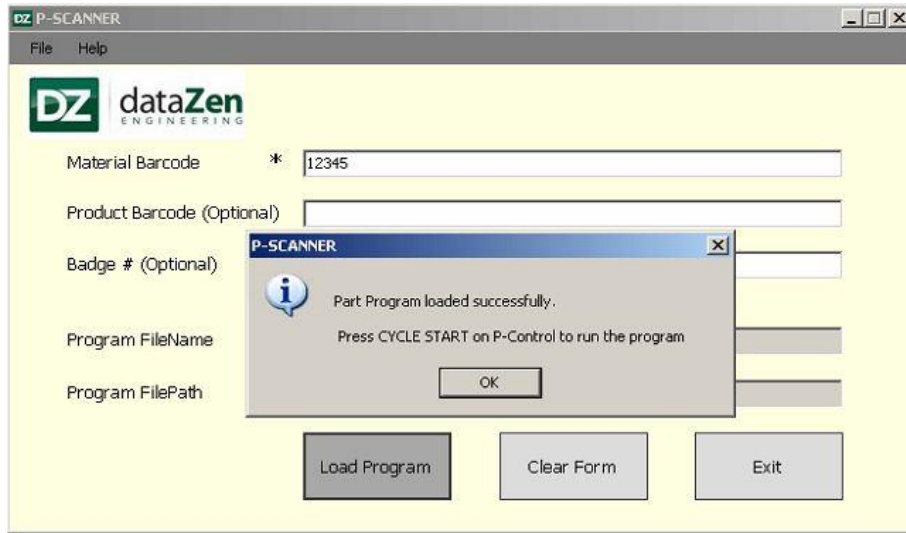


Figure 27: Load Program

7. Once the “Load Program” button is clicked, the selected program is ready for use in the control and the program file from the specific location will be copied to the .MIN File(s) path selected for ex: the program file will be copied to “D:\MD1” Folder.

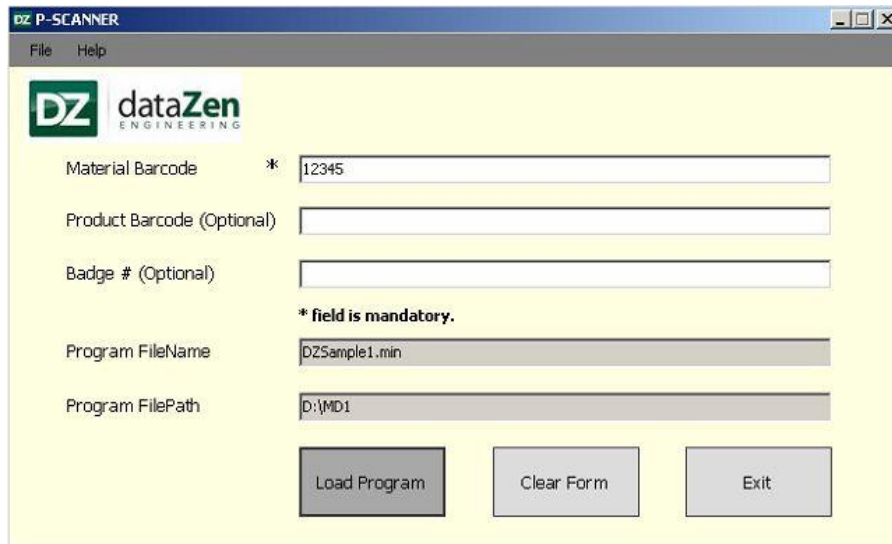


Figure 28: Part Program Loaded Successfully

8. The **Clear Form** button will clear the selection and values on each field.

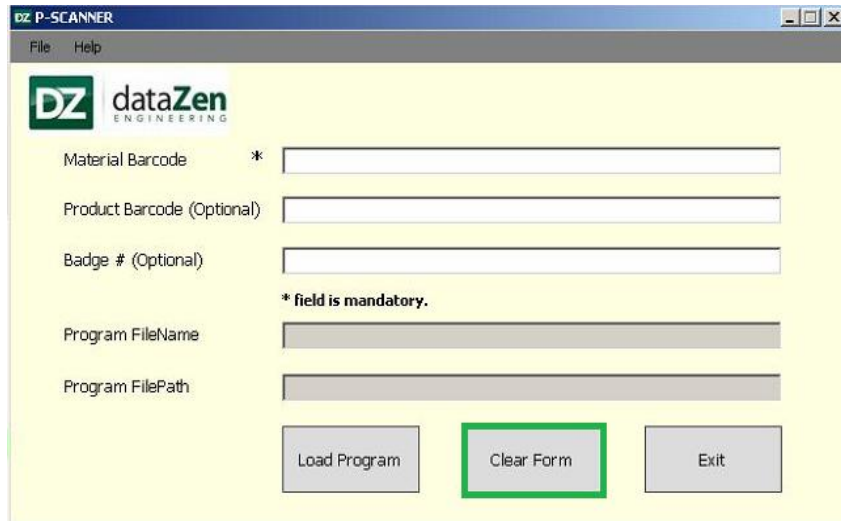


Figure 29: Clear Form

9. To close the P-SCANNER application, Select '**Exit**' and click on '**Yes**'.

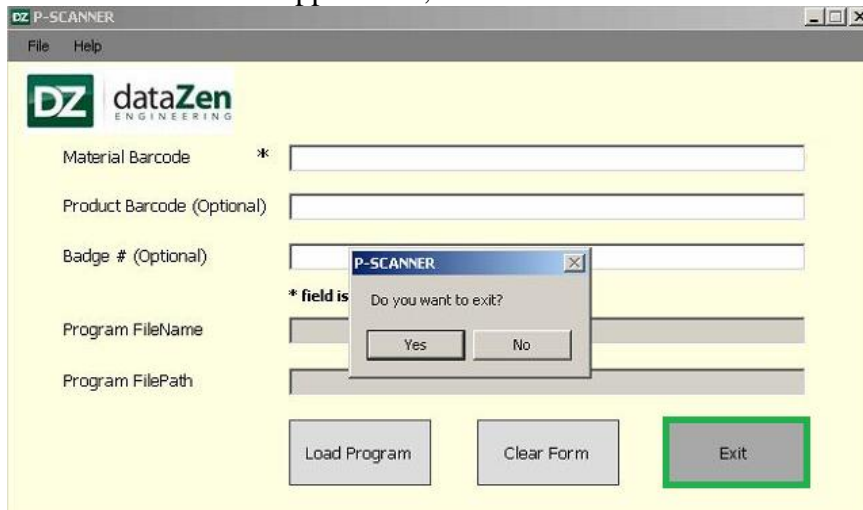


Figure 30: Exit P_SCANNER

Once the program has loaded successfully, all program details like Program Name, Material Scan, Prod Scan and Operator's Badge values with date and time will be saved as 'P-SCANNERLog.txt file' in application directory.

For Example:

[2015-05-08 17:11:15Z [Info]: ABC.MIN Program successfully selected.

2015-05-08 17:11:18Z [Info]: Material Scan: 123, Product Scan: ABC123, Operator's Badge: 543524, Program Name: ABC.MIN]

Note: Once the "P-SCANNERLog.txt" file exceeds 5 MB, the file will be deleted from the control and will be copied to configured share drive under log folder.

3.2 About P-SCANNER

To check the application version and other details please click on “Help” and then “About”.



Figure 31: About P-SCANNER

4 Administrating P-SCANNER

This section explains step by step information to configure a location to store all programs for security either locally in a safe location or over the network and add barcode details in configuration file and configure the programs with the barcode value.

To access the configuration settings, click on the 'File ->Customize'.

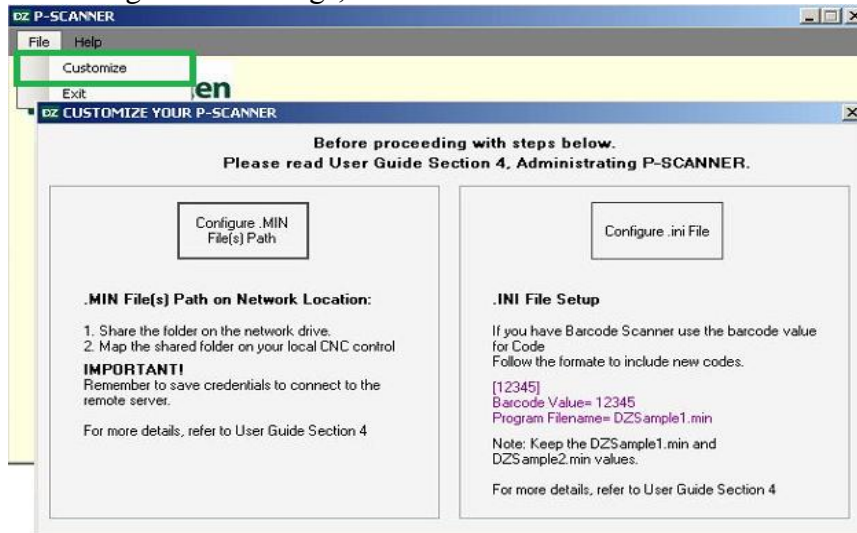


Figure 32: P-SCANNER Configuration Settings

4.1 .MIN File(s) Configuration

The .MIN File(s) path could be on your control OR a shared folder on network drive. To change the default path of “D:\MD1” folder click on the “Browse” button on the ‘Configure’ screen shown above.

4.1.1 On the Local Machine

If your location is the default location on the control itself, simply browse to the location and save the location. Follow below steps to configure .MIN File(s).

1. Go to “File→Customize” on home window of P-SCANNER and click on ‘Configure .MIN File(S) Path’ on “CUSTOMIZE YOUR P-SCANNER” window

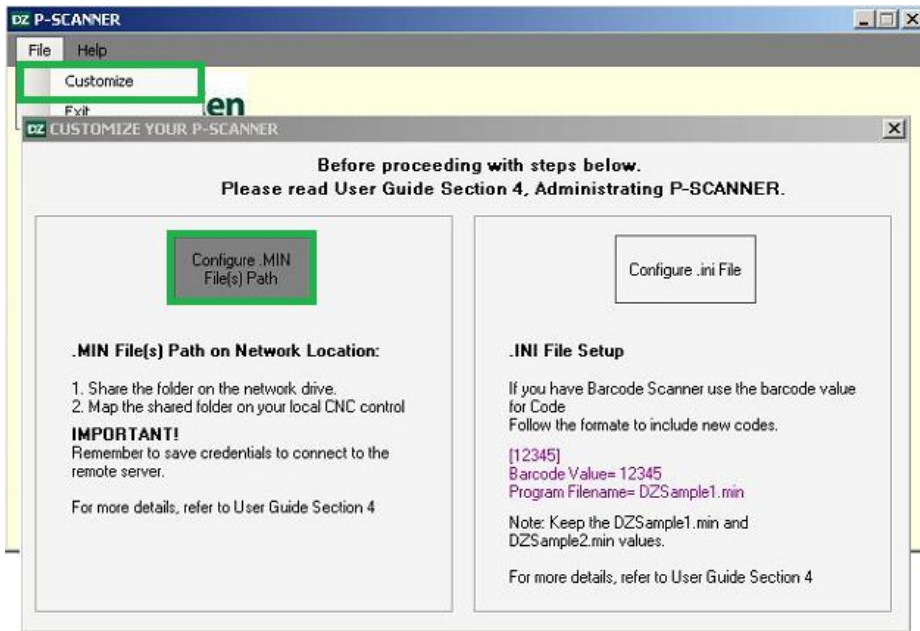


Figure 33: Configuring .MIN File(s) path

- Here the default .MIN File(s) path is 'D:\MD1' or click on **Browse** to set the desired path for .MIN File(s). Once the path is set, click on **Save**.



Figure 34: Browse for .MIN File(s) Path

- After clicking on Browse '**Browse for folder**' window is populated.
- Select the desired directory path and click on 'OK' and once the directory path is selected click on 'Save' Button.

For example: D:\MD1.

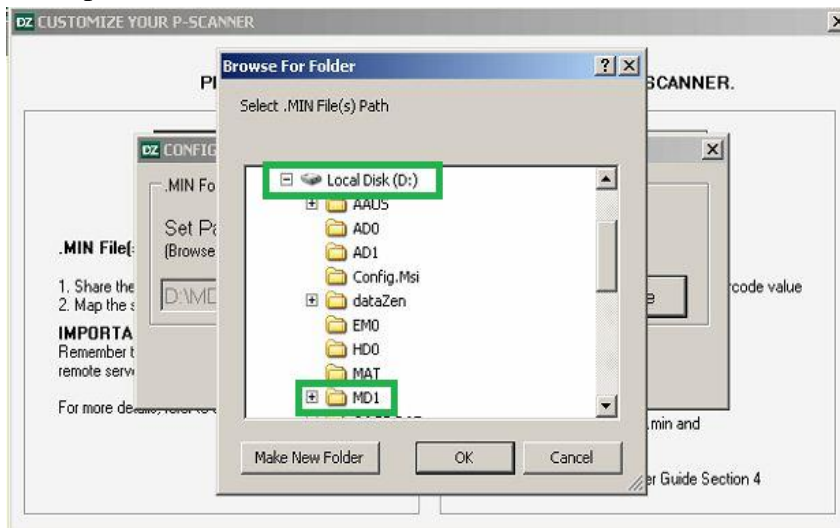


Figure 35: Browse for Desired Directory for .MIN File(s) Path

4.1.2 On the Server/Networked Machine

If your .MIN File(s) folder location is on the network drive, you will need to configure the shared folder on server / networked machine before mapping the folder on the control. The following sections describe the steps in details.

4.1.2.1 On the Server

Before starting the application, it is required to configure Common .MIN File(s) (Shared folder) by following a process which is essential for loading .min files.

1. Log on to the server and create a folder where you want to store program files, e.g. C:\ drive and name it as “P-SCANNER MIN Share”
2. Right click, “P-SCANNER MIN Share” folder and click on Properties
3. Click on Sharing tab → Advanced Sharing.

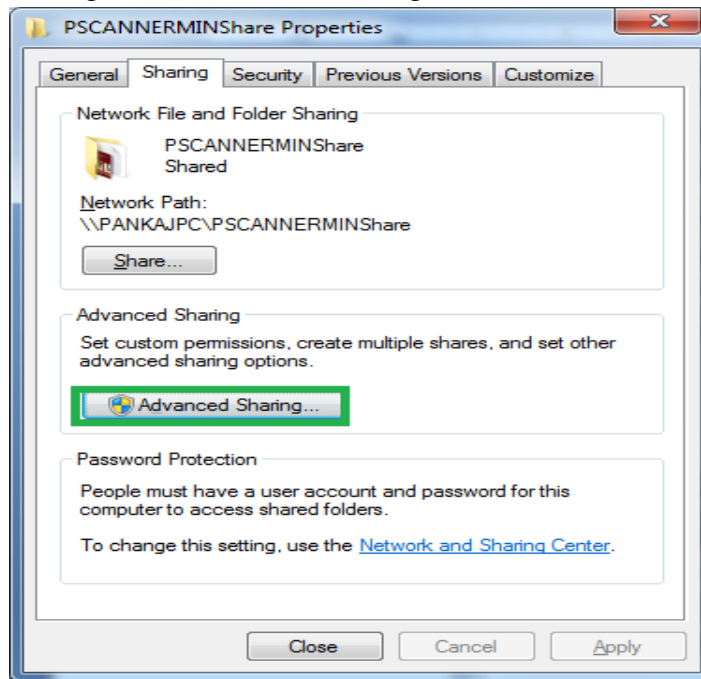


Figure 36: .MIN File(s) Configuration-1

Note: Please make sure the share directory name doesnot contain spaces.

4. Check the **'Share this folder'** checkbox and click on **Permissions**.

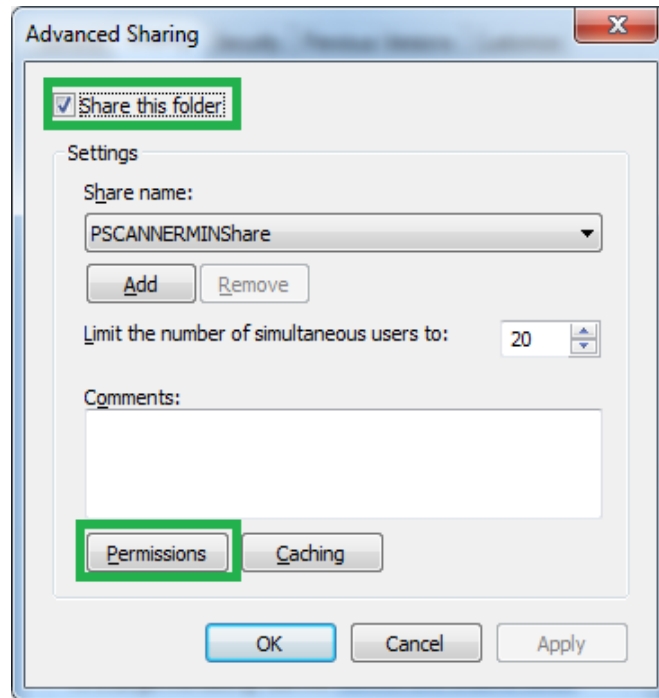


Figure 37: .MIN File(s) Configuration-2

5. Select a 'group of user name' as **"Everyone"** and check **Full Control** checkbox and click on OK for each window opened.

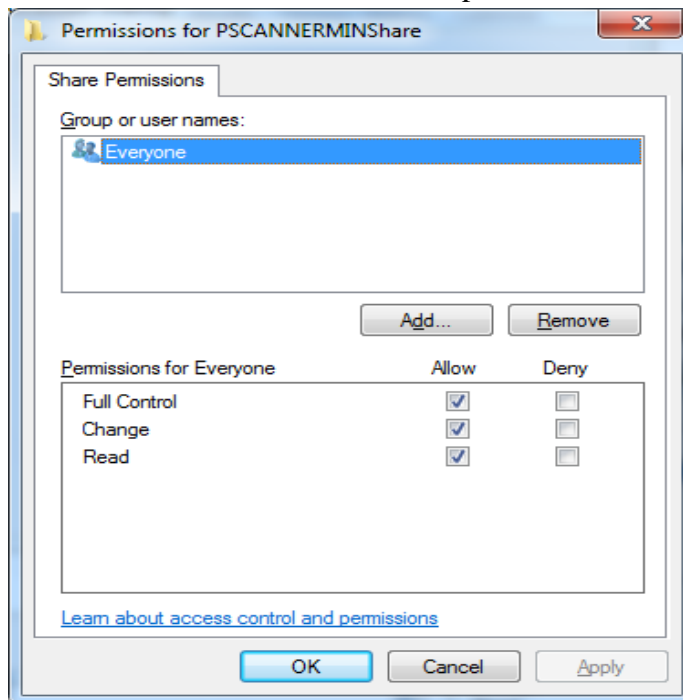


Figure 38: .MIN File(s) Configuration-3

4.1.2.2 On the Control

In order to configure program files (.MIN) from the server, we need to map the shared folder on the control.

1. Go to the control and right click on My Computer and select map drive

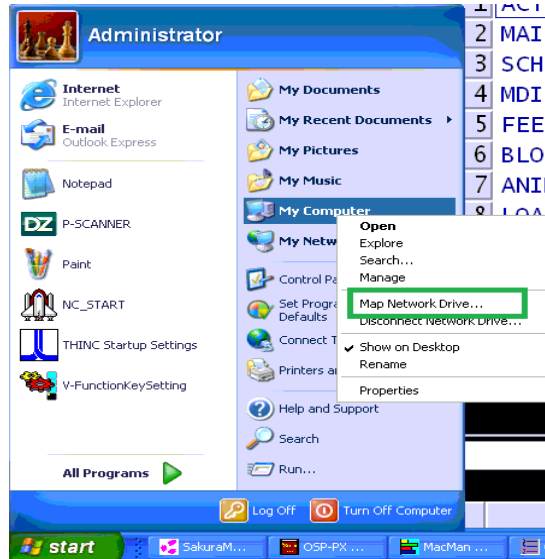


Figure 39: .MIN File(s) Configuration- On the Control-1

2. Enter the server IP address followed by shared folder name as shown in the example below.
3. Select the drive where the file folder is saved, Select the folder name and then Click on 'Reconnect at logon' check box and click on "Finish" button.

For Example: \\Server Name\PSCANNER



Figure 40: .MIN File(s) Configuration- On the Control-2

4. Enter the user name and password of the server and check **remember my Password** check box and click on **Ok**



Figure 41: .MIN File(s) Configuration- On the Control-3

5. Now, launch the application from
“Start→Programs→dataZen→P-SCANNER.”
6. Click on **File** and then click on **“Customize”**.

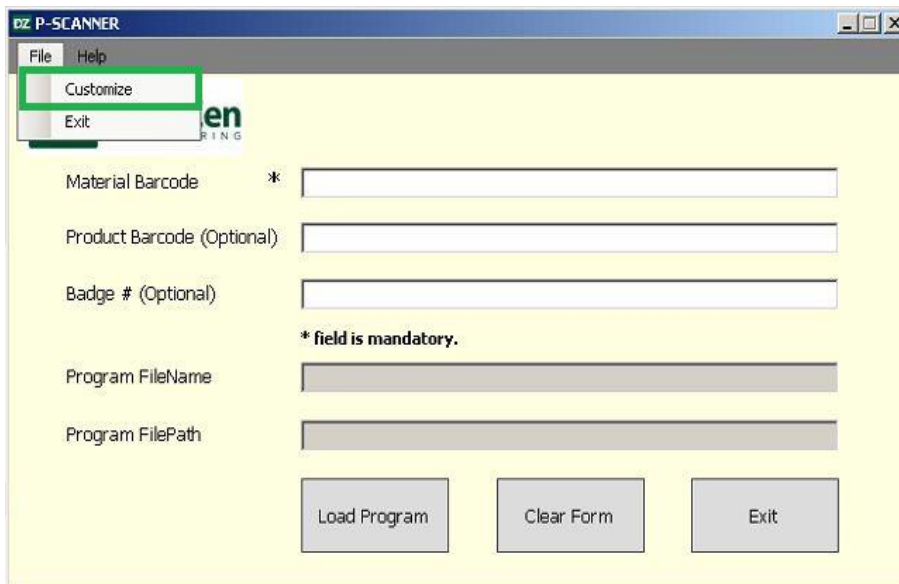


Figure 42: Configuring .MIN File(s)

- On clicking ‘Customize’, a “CUSTOMIZE YOUR P-SCANNER” window pops up in that select “Configure .MIN File(s) path” to configure the path.

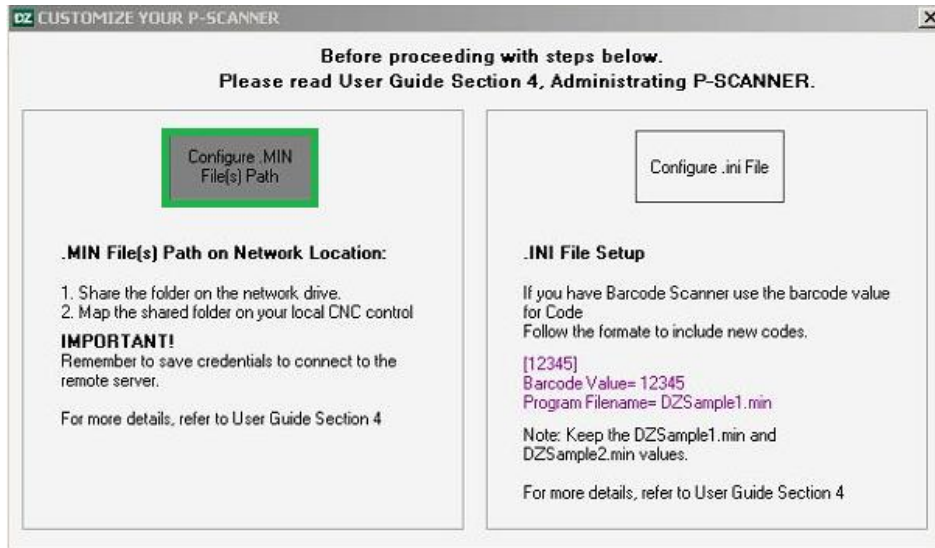


Figure 43: CUSTOMIZE YOUR P-SCANNER

- Here the default .MIN File(s) path is ‘D:\MD1’ or click on **Browse** to set the desired path for .MIN File(s). Once the path is set, click on **Save**.

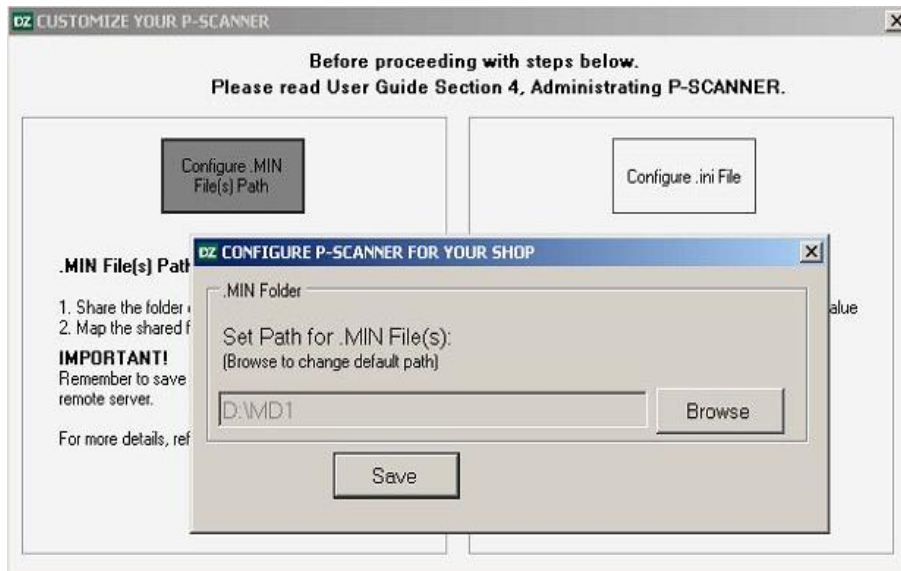


Figure 44: Select .MIN File(s)

9. After clicking on Browse **‘Browse for folder’** window is populated in that select the shared directory from network and click on **‘OK’**.

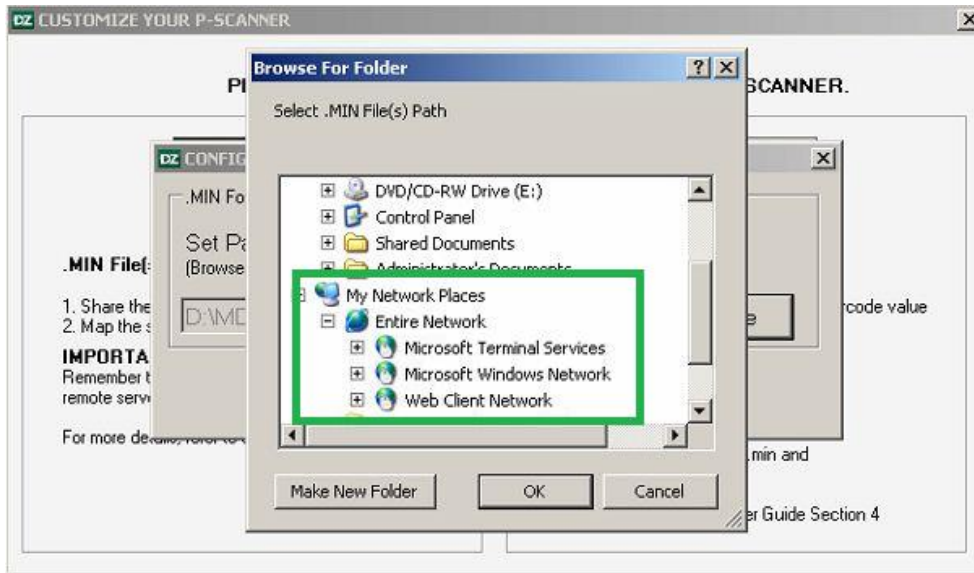


Figure 45: Select Configured shared folder

OR

10. Select the desired directory path and click on **‘OK’**. Once the directory path is selected click on **‘Save’** Button.

For example: D:\MD1.

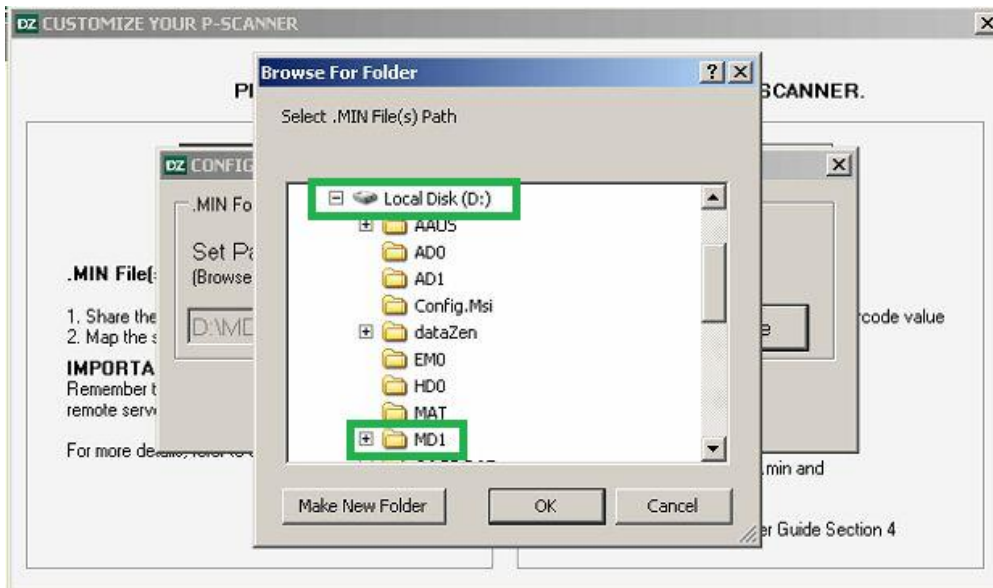


Figure 46: Save the .MIN File(s) path

For example:

1. Select the .MIN File(s) path (Directory Path) where the program files are to be saved .Here, in this example, the .MIN File(s) path is:“D:\AAUS\01.MACHINES\NC-MASTER”folder.

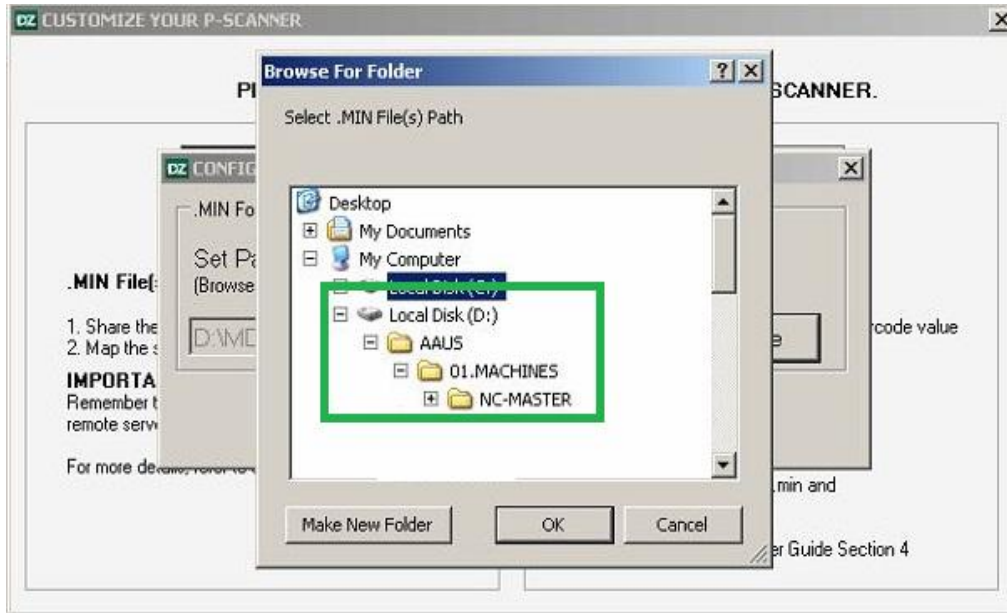


Figure 47: Select .MIN File(s) Path

2. Once the Directory path is selected click on ‘Save’ button.

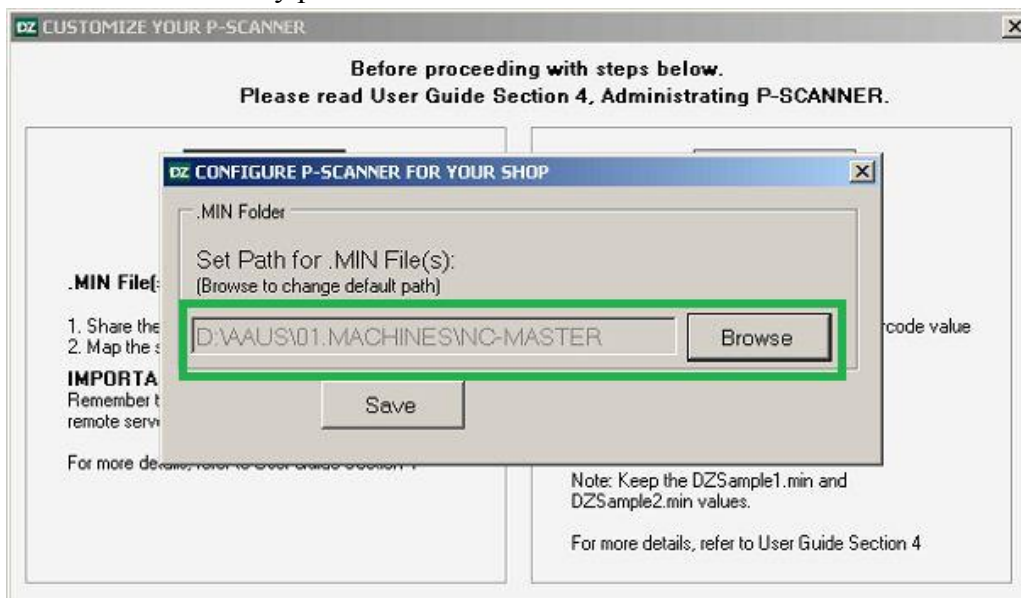


Figure 48: Save Selected .MIN File(s) path

4.2 Setting up the Configuration File

The config.ini file is where the user defines the Barcode Value, Part Program Path, Part Program Name, Setup File Path and Setup File Name.

1. Go to “File→Customize” on home window of P-SCANNER and click on ‘Configure .ini file’.

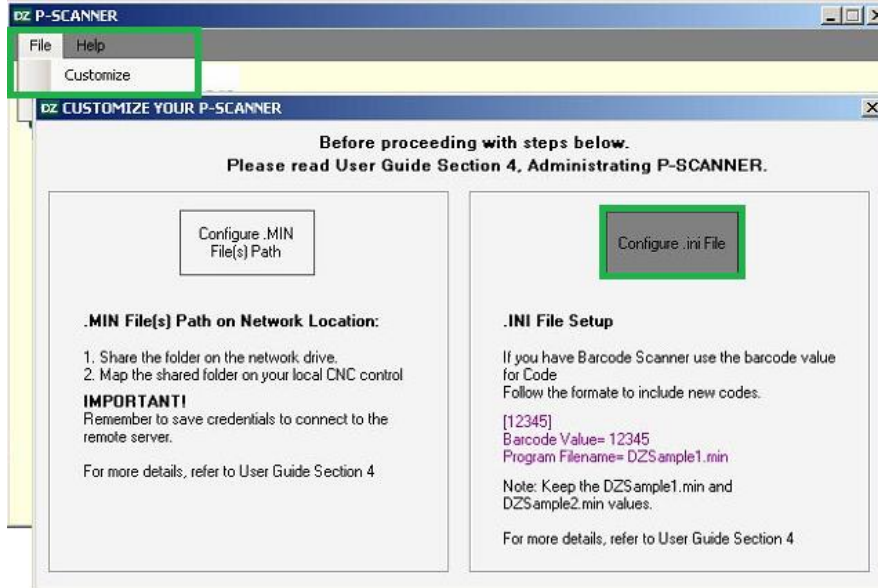


Figure 49: Setting Up Config.ini File

2. Open the config.ini in WordPad or Notepad and modify the values as per the instruction given below.

```

config.ini - Notepad
File Edit Format View Help
##### Comment Lines #####
## [...] must contain the value of the barcode
## Program Filename = is the name of the program file name
## Program File Path = is the path of the program file [NO SPACES ALLOWED]
## Setup File = is the name of the setup file
## Setup File Path = is the path of the Setup File file [NO SPACES ALLOWED]
## Note: If no setup file is required then leave it blank

## Example
## [123]=Barcodevalue
## Barcode value= 123
## Program Filename= MAT-10.min
#####
[.MIN Folder]

PATH=C:s3VwZcqH0u+Y9Xa1Sx0jw\=\=

[12345]
Barcode value= 12345
Program Filename= DZSample1.min

[V01114A7511-7]
Barcode value= V01114A7511-7
Program Filename= DZSample2.min

```

Figure 50: Setting up Config.ini File-1

- a. []: Enter the Barcode value/number in the box []
- b. **Barcode Value:** Enter the value for entered barcode number
Program Filename: Enter the Part Program file name for the selected barcode value. E.g. mat-10.min

3. Save the file and close it.

Note: User can configure multiple part program using above format.

Two sample program files (DZSample1.min and DZSample2.min) are added to the config.ini file to test the P-SCANNER application.

5 License

5.1 Check validity

To check the license validity click on “Check Validity”.

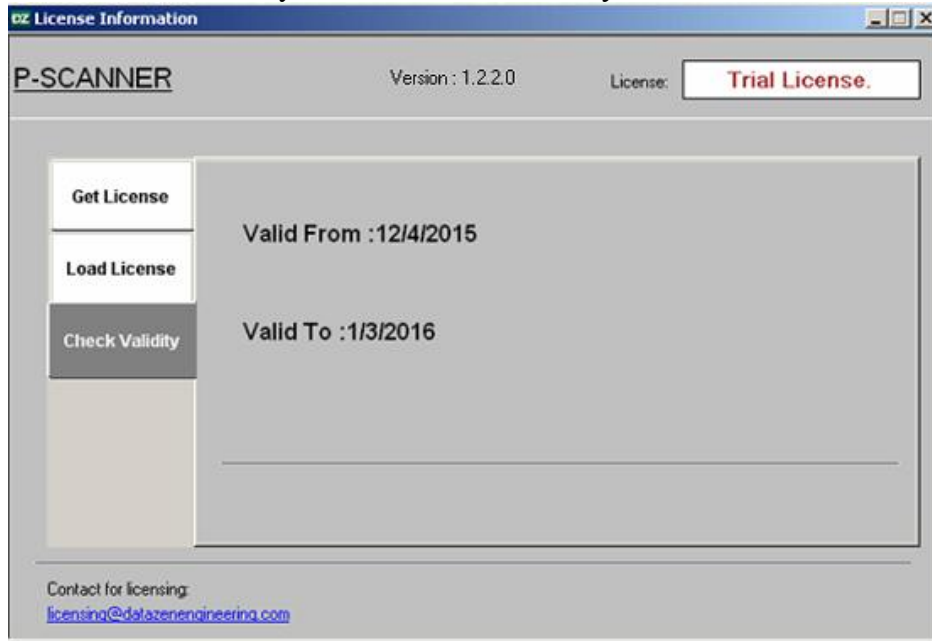


Figure 51: Check Validity

5.2 Get License

1. Click on “Help” and select “LicenseInfo”.

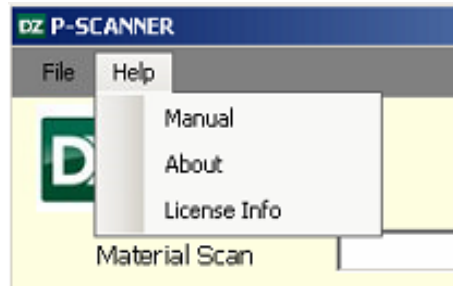


Figure 52: License Info

2. Click on “Get License” and email the “Hardware Id” displayed in the box to licensing@dataZenEngineering.com.

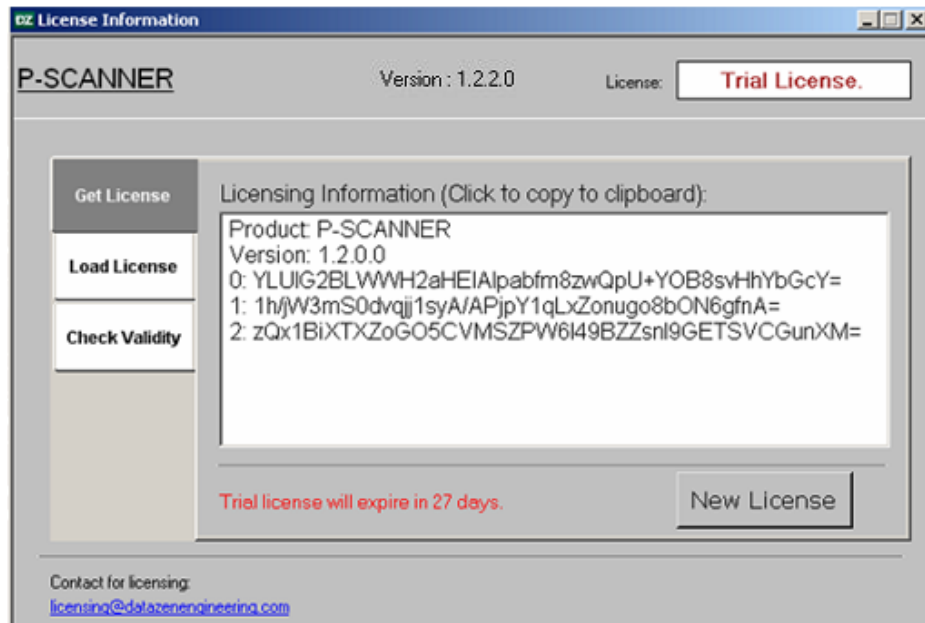


Figure 53: Get License

5.3 Load License

1. To load the license open “License Information” window from “Help” menu and click on “Load License”.
2. To browse the license file click on “Load License” button, select the file and click on “Open”.

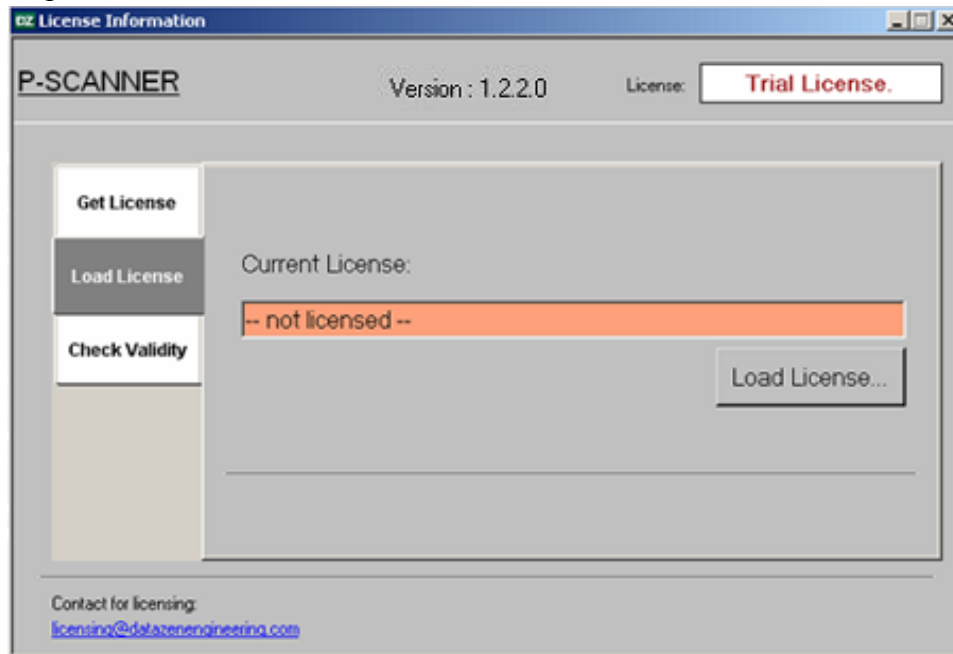


Figure 54: Load License

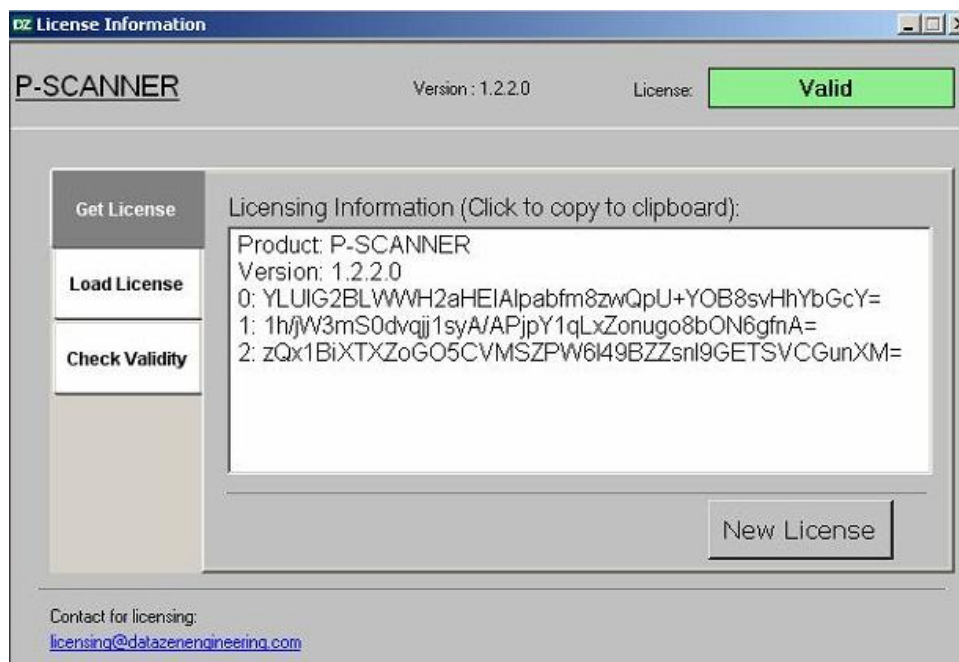


Figure 55: License Valid

6 Terms and Conditions

It is important that you carefully read the following terms and conditions before using P-SCANNER. These terms form, a license agreement ("LICENSE") between dataZen Engineering and Organization for the use of this software, as well as any future fixes, updates, upgrades, or extensions provided to the organization (collectively, the "Software").

YOU AGREE THAT THIS AGREEMENT IS ENFORCEABLE LIKE ANY WRITTEN NEGOTIATED AGREEMENT SIGNED BY YOU. THIS AGREEMENT IS ENFORCEABLE AGAINST YOU AND ANY PERSON OR LEGAL ENTITY THAT OBTAINED THE SOFTWARE AND ON WHOSE BEHALF IT IS USED. IF YOU DO NOT AGREE, DO NOT USE THIS SOFTWARE.

In order to use the Software, you must first read and accept the terms of this license.

Things to Know

1. This Software provides access to data gathered from an Okuma OSPHINC controller. Access to this data requires the THINC Application Programming Interface (API) to be installed on the THINC controller. Remote access requires the Event-Based THINC API.
2. You may install this Software on one (1) server. A license key must be entered prior to using the Software beyond the trial period, using a mechanism provided at install, or a configuration utility provided post-installation. Contact dataZen to obtain a license key for use of this Software.
3. Because the mechanism for data gathering is the THINC API, use of this Software is subject to the same disclaimers, warnings, and limitations of liability agreed upon for use of the THINC API. Contact Okuma America Corporation for a current license agreement for the THINC API
4. This software communicates with the THINC API through a network TCP channel, which is non-real time. Additionally, THINC API runs atop a non-real time Windows operating system. dataZen cannot predict or guarantee the timing of data updates to or from this Software. Therefore, applications dependent upon time-critical decision making must not utilize this Software
5. **CAUTION – IMPROPER USE OF THIS SOFTWARE COULD RESULT IN EQUIPMENT DAMAGE.**

What may be done under this License?

1. Subject to all the terms of this license, dataZen grants you a limited, non-exclusive, personal, non-sub licensable, non-assignable license to install and use the Software.
2. Unless explicitly stated otherwise, any new features that augment or enhance the current Software, including the release of new properties, configuration files, or utilities, shall be subject to the terms of this license.

What cannot be done under this License?

You agree not to use this Software to:

1. Transmit or communicate any data that is unlawful, harmful, threatening, abusive, harassing, defamatory, vulgar, obscene, invasive of another's privacy, hateful, or racially, ethnically, or otherwise objectionable;
2. Harm minors in any way;
3. Impersonate any person or entity, or falsely state or otherwise misrepresents your affiliation with a person or entity;
4. Forge headers or otherwise manipulate identifiers in order to disguise the origin of any data transmitted to other users;
5. Transmit, access, or communicate any data that you do not have a right to transmit under any law or under contractual or fiduciary relationships (such as inside information, proprietary and confidential information learned or disclosed as part of employment relationships or under non-disclosure agreements);
6. Transmit, access, or communicate any data that infringes any patent, trademark, trade secret, copyright, or other proprietary rights of any party;
7. Transmit or communicate any data that contains software viruses or any other computer code, files, or programs designed to interrupt, destroy, or limit the functionality of any computer software, hardware, or telecommunications equipment;
8. Disrupt the normal flow of dialogue, cause a screen to "scroll" faster than other users are able to type, or otherwise act in a manner that negatively affects other users' ability to engage in real time exchanges;
9. Interfere with or disrupt the Software;
10. Intentionally or unintentionally violate any applicable local, state, national, or international law, including securities exchange and any regulations, requirements, procedures, or policies in force from time to time relating to the Software.
11. Monitor traffic or make search requests in order to accumulate information about individual users;
12. "Stalk" or otherwise harass another;
13. Modify, delete, or damage any information contained on the controller of any user;
14. Collect or store personal data or other information about other users; or
15. Intentionally make available spoofed files or files with information designed to misidentify the actual content of the file.

More Do's and Don'ts

1. This License allows you to install and use the Software on a single machine. This License does not permit you to install the Software on more than one machine at a time. You may make copies of the Software in machine-readable form for backup purposes only. The backup copy must include all copyright information contained in the original.
2. Except as expressly permitted in this License, you agree not to reverse engineer, decompile, disassemble, alter, duplicate, modify, rent, lease, loan, sublicense, make copies, create derivative works from, distribute, or provide others with the Software in whole or part, or transmit, make available, or communicate the application over a network.
3. You may not sell, transfer, or communicate the Software to any third party without our prior express written consent.
4. You may not use, test, or otherwise utilize the Software in any manner for purposes of developing or implementing any method or application that is intended to monitor or interfere with the functioning of the Software.
5. You may not, through the use of any third party software application, alter or modify the values stored by the Software in the memory, on your machine's hard drive or other storage media, or in your machine's registry, or with the exception of completely uninstalling the Software, otherwise modify, alter, or block the functioning of the Software.
6. You may not use unlicensed or unauthorized copies of the Software to obtain information about other users of the Software or for any other purpose.
7. You may not use automated means, including scripts, batch files, emulators, or any other means other than direct manual input by yourself, to control the operation of the Software.

Things that need to be done when using the Software

1. It is your responsibility to ensure that you obtain all consents, authorizations, and clearances for any data owned or controlled by third parties that you transmit, access, or communicate to others using the Software.
2. dataZen will not be liable in any way:
 - a) For any errors or omissions in any data, or for any loss or damage of any kind incurred as a result of any data transmitted or failing to be transmitted via the Software;
 - b) If you are exposed to data that is offensive, indecent, or objectionable;
 - c) For any allegations or findings of infringement of copyright or other proprietary rights as a result of your use of the Software;
 - d) For any other applications or third-party applications on the same server as the Software, or on any machine to which the Software connects;
 - e) For allowing you data access;
 - f) If the server adversely affects the control or your network, including any degradation of performance or increase in network traffic, or for any loss or damage of any kind incurred as a result of such an adverse effect.

3. It is your responsibility to ensure that you are in compliance with all relevant laws, ordinances, and regulations when using this Software. dataZen cannot be liable for any unlawful use of this Software by the user.

Copyright Infringement

1. dataZen respects copyright and other laws. dataZen requires all dataZen users to comply with copyright and other laws. dataZen does not by the supply of this Software authorize you to infringe the copyright or other rights of third parties.
2. As a condition to use the Software, you agree that you must not use the Software to infringe the intellectual property or other rights of others, in any way. The unauthorized reproduction, distribution, modification, public display, communication to the public or public performance of copyrighted works is an infringement of copyright.
3. Users are entirely responsible for their conduct and for ensuring that it complies with all applicable copyright and data-protection laws. In the event a user fails to comply with laws regarding copyrights, other intellectual property rights, data-protection and privacy, such a user may be exposed to civil and criminal liability, including possible fines and jail time.

Applicable Law

1. This license, as well as all disputes arising out of or in connection with this license, shall be governed by the laws of the State of North Carolina, without regard to or application of choice of law rules or principles.
2. Any dispute arising out of or in connection with this license, or in future agreements resulting there from, shall be exclusively resolved before the competent court in the State of North Carolina.
3. User and dataZen agree to submit to the personal and exclusive jurisdiction of the courts located within the State of North Carolina. The failure of dataZen or any third party service providers to exercise or enforce any right or provision of this License shall not constitute a waiver of such right or provision.
4. The user agrees that regardless of any statute or law to the contrary, any claim or cause of action arising out of or related to use of the Software or this License must be filed within one (1) year after such claim or cause of action arose, or be forever barred.

Points to Consider for International Use

1. Recognizing the global nature of the Internet, you agree to comply with all local rules regarding online conduct and acceptable data. Specifically, you agree to comply with all applicable laws regarding copyright and the transmission of technical data exported from the country in which you reside.

Indemnification

1. YOU AGREE TO INDEMNIFY, HOLD HARMLESS, AND DEFEND dataZen AND ITS SUBSIDIARIES, AFFILIATES, OFFICERS, AGENTS, CO-BRANDERS, OR OTHER PARTNERS, AND EMPLOYEES, AT YOUR

EXPENSE, AGAINST ANY AND ALL THIRD PARTY CLAIMS OR DEMANDS, ACTIONS, PROCEEDINGS,

AND SUITS, AND ALL RELATED LIABILITIES, DAMAGES, SETTLEMENTS, PENALTIES, FINES, COSTS, AND EXPENSES (INCLUDING, WITHOUT LIMITATION, REASONABLE ATTORNEY'S FEES AND OTHER DISPUTE RESOLUTION EXPENSES) INCURRED BY dataZen, DUE TO OR ARISING OUT OF DATA YOU SUBMIT, POST TO, TRANSMIT, OR COMMUNICATE THROUGH THE SOFTWARE, YOUR USE OR MISUSE OF THE SOFTWARE, YOUR CONNECTION TO OTHER USERS, YOUR VIOLATION OF THIS LICENSE, OR YOUR VIOLATIONS OF ANY RIGHTS OF ANOTHER.

Disclaimer of Warranties

1. THE SOFTWARE IS PROVIDED "AS IS" AND ON AN "AS AVAILABLE BASIS". THERE ARE NO CLAIMS, REPRESENTATIONS, OR WARRANTIES MADE BY dataZen, EITHER EXPRESS, IMPLIED, OR STATUTORY (TO THE EXTENT PERMITTED BY APPLICABLE LAW), WITH RESPECT TO THE SOFTWARE, INCLUDING BUT NOT LIMITED TO, WARRANTIES OF QUALITY, PERFORMANCE, TITLE, NON-INFRINGEMENT, MERCHANTABILITY, OR FITNESS FOR A PARTICULAR PURPOSE, NOR ARE THERE ANY WARRANTIES CREATED BY COURSE OF DEALING, COURSE OF PERFORMANCE, OR TRADE USAGE.
2. ANY DATA DOWNLOADED THROUGH THE USE OF THE SOFTWARE IS DONE AT YOUR OWN DISCRETION AND RISK, AND YOU WILL BE SOLELY RESPONSIBLE FOR ANY DAMAGE TO YOUR OPERATING SYSTEM, OR LOSS OF DATA THAT RESULTS FROM THE DOWNLOAD OR USE OF ANY SUCH MATERIAL.
3. NO ADVICE OR INFORMATION, WHETHER ORAL OR WRITTEN, OBTAINED BY USER FROM dataZen OR THEIR THIRD PARTY SERVICE PROVIDERS, SHALL CREATE ANY WARRANTY NOT EXPRESSLY STATED HEREIN.

Limitation of Liability

1. YOU UNDERSTAND AND AGREE THAT IN NO EVENT SHALL dataZen BE LIABLE, WHETHER IN CONTRACT, WARRANTY, TORT (INCLUDING NEGLIGENCE, WHETHER ACTIVE, PASSIVE, OR IMPUTED), PRODUCT LIABILITY, OR STRICT LIABILITY, EVEN IF dataZen HAS BEEN ADVISED OF THE POSSIBILITY OF SUCH DAMAGES OR IF SUCH DAMAGES ARE FORESEEABLE, FOR ANY DIRECT, INDIRECT, INCIDENTAL, SPECIAL, CONSEQUENTIAL, OR EXEMPLARY DAMAGES, INCLUDING BUT NOT LIMITED TO DAMAGES FOR LOSS OF PROFITS,

GOODWILL, USE, DATA, OR OTHER INTANGIBLE LOSSES, RESULTING FROM:

- a) THE USE OR THE INABILITY TO USE THE SOFTWARE;
 - b) THE COST OF PROCUREMENT OF SUBSTITUTE GOODS, DATA, INFORMATION, OR SERVICES PURCHASED OR OBTAINED, OR MESSAGES RECEIVED, OR TRANSACTIONS ENTERED INTO THROUGH OR FROM THE USE OF THE SOFTWARE;
 - c) UNAUTHORIZED ACCESS TO OR ALTERATION OF YOUR TRANSMISSIONS OR DATA;
 - d) STATEMENTS OR CONDUCT OF ANY THIRD PARTY USING THE SOFTWARE; OR
 - e) ANY OTHER MATERIAL RELATING TO THE USE OF THE SOFTWARE. IN NO EVENT SHALL data Zen's TOTAL LIABILITY TO YOU FOR ALL DAMAGES EXCEED THE AMOUNT OF FIFTY AMERICAN DOLLARS (\$50).
2. WHERE STATE OR TERRITORY LEGISLATION IMPLIES INTO THIS LICENSE ANY CONDITION OR WARRANTY, AND THOSE LAWS AVOID OR PROHIBIT CONDITIONS IN A CONTRACT EXCLUDING OR MODIFYING THEM, THEN THE TERM, CONDITION OR WARRANTY SHALL BE DEEMED TO BE INCLUDED IN THIS LICENSE, PROVIDED THAT TO THE FULL EXTENT THAT dataZen IS LIABLE TO THE USER FOR A BREACH OF ANY SUCH CONDITION OR WARRANTY, INCLUDING ANY ECONOMIC OR CONSEQUENTIAL LOSS, SHALL BE LIMITED AT THE OPTION OF dataZen TO ONE OR MORE OF THE FOLLOWING:
 - a) IF THE BREACH RELATED TO GOODS:
 - i. THE REPLACEMENT OF THE GOODS OR THE SUPPLY OF EQUIVALENT GOODS;
 - ii. THE REPAIR OF GOODS;
 - iii. THE PAYMENT OF THE COST OF REPLACING THE GOODS OR OBTAINING EQUIVALENT GOODS;
 - iv. THE PAYMENT OF HAVING THE GOODS REPAIRED; OR

- b) IF THE BREACH RELATES TO SERVICES:
 - i. THE SUPPLY OF THE SERVICE AGAIN; OR
 - ii. THE PAYMENT OF THE COST OF HAVING THE SERVICE SUPPLIED AGAIN.
3. THE LIMITATIONS SET FORTH IN PARAGRAPHS 12.2, 12.2.1, AND 12.2.2 SHALL APPLY EVEN IN THE EVENT OF A FUNDAMENTAL OR MATERIAL BREACH, OR A BREACH OF THE FUNDAMENTAL OR MATERIAL TERMS OF THIS AGREEMENT.

Termination

1. It is your responsibility to comply with the terms of this License, and to obey the laws of your jurisdiction. Your rights under this License will terminate immediately and without prior notice if: you violate any term of this license, including violating any applicable laws or rights of any third party, including the intellectual property rights of any such third party. You may be subject to legal action if you continue to use the Software in violation of this License.

Miscellaneous

1. This license constitutes the entire understanding of you and dataZen with respect to the Software and the subject matter hereof. There are no understandings, agreements, conditions, or representations, oral or written, express or implied, with reference to the subject matter hereof that are not merged herein, expressly referenced herein, or superseded hereby.
2. The failure or delay of dataZen to exercise or enforce any rights or provision of the License does not constitute a waiver of such right or provision.
3. All provisions which must survive in order to give effect to their meaning, shall survive any expiration or termination of this License, including without limitation all of your representations, warranties, and indemnification obligations.
4. Should any part of this License be held invalid by any court or tribunal, such invalidity shall not affect the validity of any remaining part, which will remain in full force and effect as if this License had been executed without that part having been held to be invalid.

Amendment

DataZen may modify this License at any time, and such modifications shall be effective immediately upon posting or other method of notification to the User. The User's continued access or use of the Software shall be deemed to be User's conclusive acceptance of the modified License Agreement

7 Technical Support

For support, user will put request through email or call and dataZen will log a ticket as per priority resolution will be provided.

The fastest method of contact dataZen is by email. Inquiries will be answered as soon as possible, typically within one business day.

- For questions about licensing, or to obtain a license key:
licensing@dataZenEngineering.com
- For technical support or troubleshooting:
support@dataZenEngineering.com
- For inquiries about custom software development:
dataZen@dataZenEngineering.com
- For sales-related inquiries:
sales@dataZenEngineering.com
- Other methods of contact are also available

DataZen Engineering

5 W Hargett Street

Suite 200

Raleigh, NC 27601

United States

Office Contact no. (919) 526-1018

Online: www.dataZenEngineering.com