

# Variable Picture Application



1931 Sanford Road  
P.O. Box 1529  
Wells, ME 04090

p: 207.646.6071  
f: 207.646.6983

Copyright © Caron Engineering, Inc. August 2010-2011

# Table of Contents

|   |    |
|---|----|
| Introduction .....                      | 3  |
| System Requirements.....                | 4  |
| Overview .....                          | 5  |
| Installation.....                       | 6  |
| User Guide .....                        | 7  |
| System configuration:.....              | 7  |
| Setting Control Variable:.....          | 8  |
| Setting the Variable Sub System.. ..... | 8  |
| Setting the variable check time.....    | 8  |
| Adding a picture:.....                  | 9  |
| Editing/Deleting a picture: .....       | 12 |
| Log Level: .....                        | 12 |
| Customer Support .....                  | 13 |

# Introduction

Dear Customer, We at Caron Engineering Inc. would like to express our sincere appreciation for choosing our company to provide solutions that make you more productive and solve your manufacturing problems. We have many hardware and software products that were specifically designed for the CNC manufacturing industry. For more information about our products and services please visit our web-site at [www.caron-eng.com](http://www.caron-eng.com)

# System Requirements

The following system requirements must be met in order to run the Variable Picture Application:

1. P200 control
2. THINC API (Lathe or Machining Center) v1.9.1 or greater
3. Knowledge of whether the control is for a lathe(L) or a mill(M).

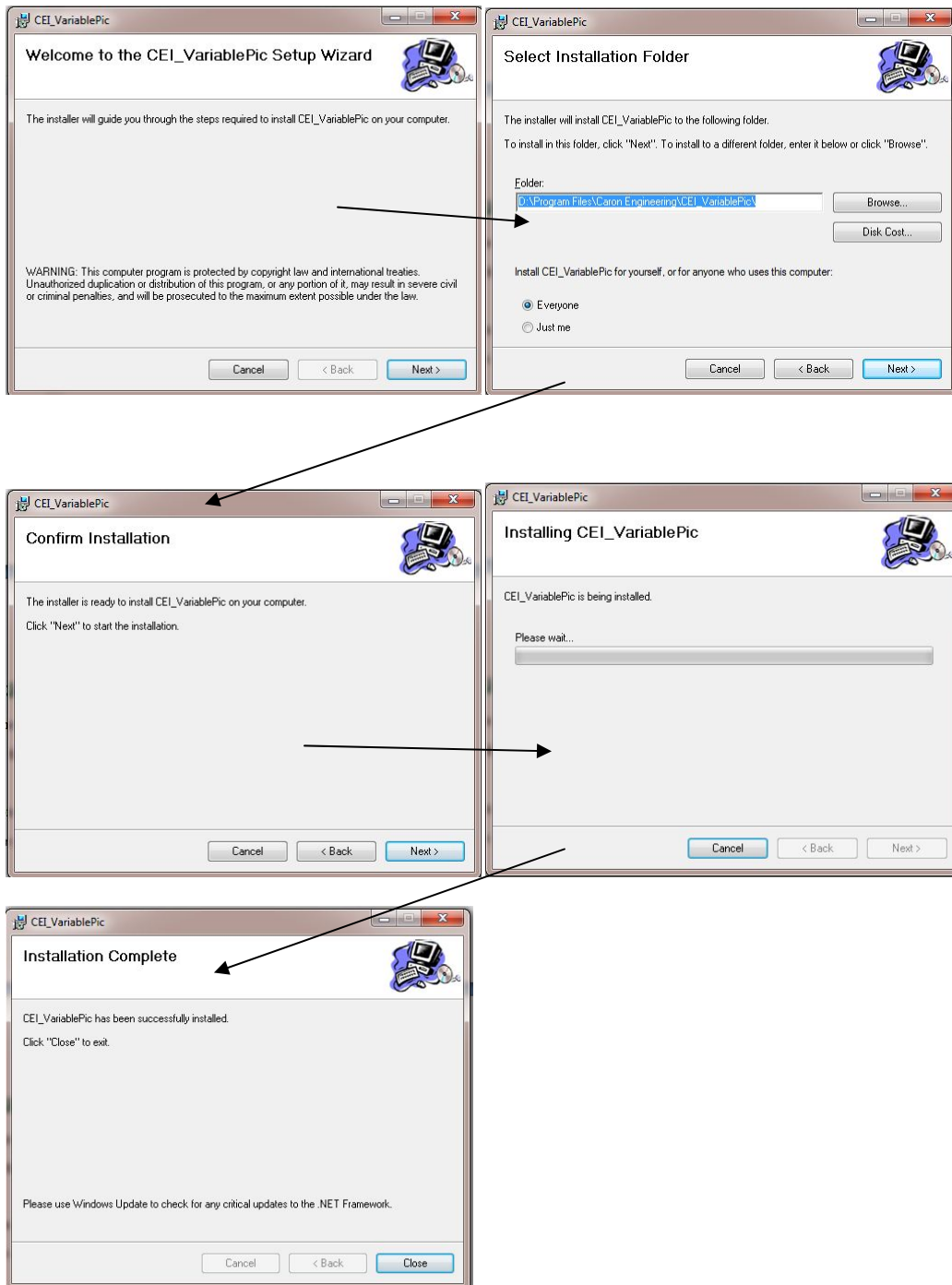
**Note:** Not all versions of THINC API are currently supported. If you receive an error while running this application, please contact Caron Engineering. We can provide a plug-in to enable support for your version of THINC API.

# Overview

The Variable Picture Application (VPA) provides the user with the ability to automatically display any picture, in .JPG format, on the user screen by setting a variable in the part program. The purpose is to allow the part programmer to provide helpful images to the operator while the program is running. The user simply associates a picture to a numerical value and then when the pre-defined macro variable is set to that value, the picture is displayed. Only one picture at a time can be displayed and the program remembers both the size and location of each picture so that each time the part program calls an image it is in the same place and of the same size as the last time. This application is freeware and given to the THINC Developers Group to distribute as they see fit.

# Installation

- ❑ Determine whether you have a P200L or P200M control. Double click on the InstallVariablePicLathe.bat if you have a P200L and click on InstallVariablePicMill.bat if you have a P200M control to begin installation
- ❑ Follow the steps provided in the Setup Wizard

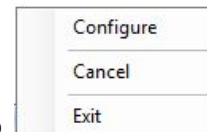


# User Guide

## System configuration

To launch the application go to Start – All Programs – CEI\_VariablePic Folder – and double click the CEI\_VariablePic icon. The application will start and an icon will appear in the tray on

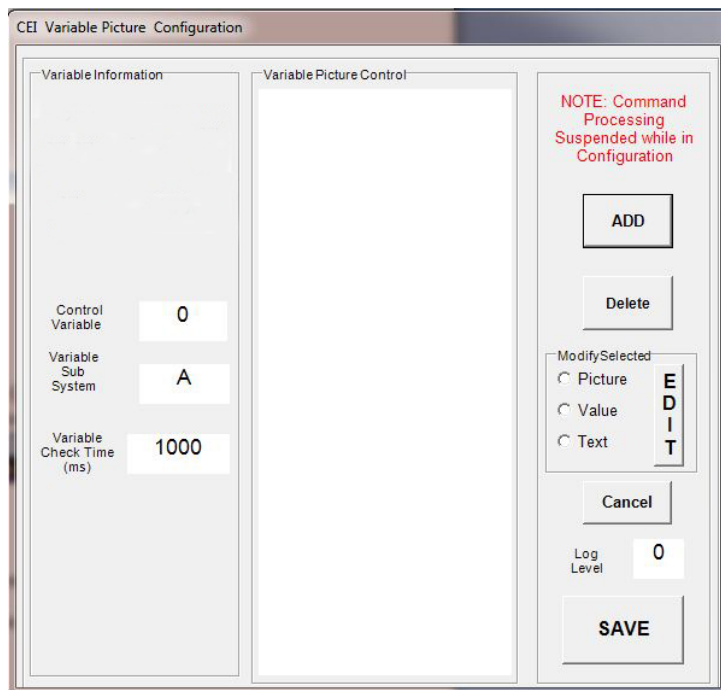
the lower right corner of the screen



Double click the icon in the tray and the following screen pops up

Cancel puts this screen away. Exit stops the application and exits, removing the icon from the tray.

Selecting configure brings up the following screen:



This screen is used to set up the application for use with the CNC control and to configure which pictures will be displayed. There are several fields that usually only need to be set once.

## The following parameters configure the software

|                     |     |
|---------------------|-----|
| Control<br>Variable | 177 |
|---------------------|-----|

The **Control Variable** is that one that will be monitored to determine which picture to display. If this variable is set to 0 then no pictures are displayed. If it is set to a value that is associated to a picture then that picture is displayed. This variable can be set to any number as long as the control has a valid common variable for this number. Care should also be taken that this variable isn't used by another application or the part program for another function.

|                           |   |
|---------------------------|---|
| Variable<br>Sub<br>System | A |
|---------------------------|---|

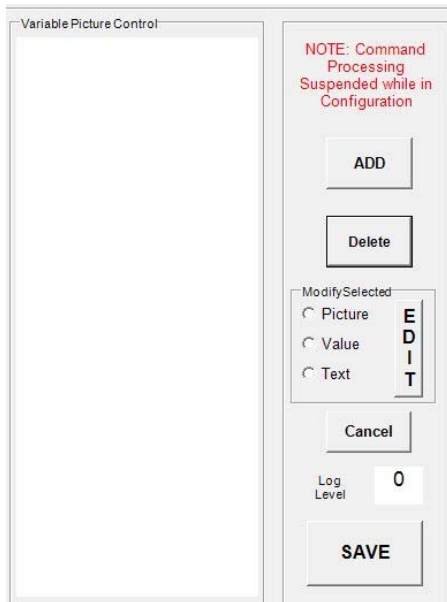
The **Variable Sub System** is only used for twin spindle machines. Any other machine uses the same set of common variables for each turret.

|                                |     |
|--------------------------------|-----|
| Variable<br>Check Time<br>(ms) | 500 |
|--------------------------------|-----|

The **Variable Check Time** is how often the control variable should be checked. This variable must never be set to a value lower than 100 milliseconds. A lower value will make the pictures appear more quickly but will impact the bandwidth of the control. Typically a 1000 Msec (1 Second) is a good value.

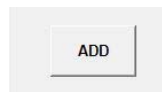


The remaining part of the configuration screen defines how to associate a picture to a value in the control variable. It will also allow the picture to have a message in the status bar of the picture. The main screen for this setup is below. **NOTE: When this screen is visible the variable is not read and no pictures are displayed. Make sure that you click the SAVE button after completing any edits.**

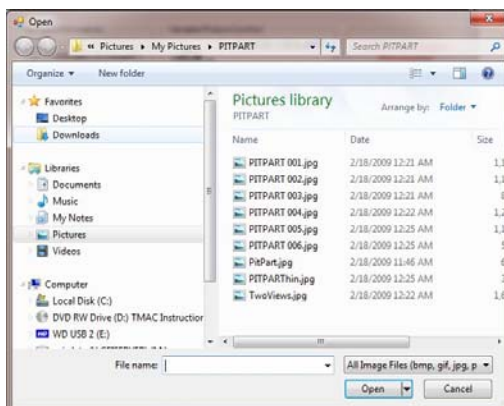


## Adding a picture:

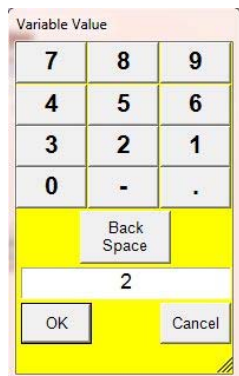
To add a new picture, click the ADD button.



Once clicked the file view screen will appear and allow you to browse for the picture file that you want to display.



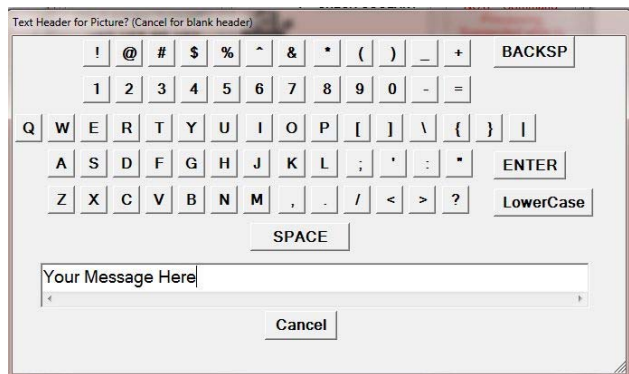
Simply browse to the picture file that you want and click Open or double click the picture. Only .JPG files are accepted as valid picture files. Once the picture is selected, the following screen appears asking for the value of the control variable that will cause this picture to display:



A dialog box titled "Variable Value" with a yellow background. It contains a numeric keypad with buttons for digits 0-9, a decimal point, and a minus sign. Below the keypad is a "Back Space" button. A text input field below that contains the number "2". At the bottom are "OK" and "Cancel" buttons.

This value will be used to launch this picture. As an example, if the control variable is set to 177 as in our above example, and the value of 2 is keyed in for this picture, then in the CNC program the line would be V177=2 (for a lathe) or VC177=2 (for a mill). This line of code would cause the picture associated with this value to display.

Text can also be added to the top of the picture. After entering the variable value, the next screen will allow you to add a text message.



A dialog box titled "Text Header for Picture? (Cancel for blank header)". It features a comprehensive keyboard layout with buttons for letters A-Z, numbers 0-9, punctuation, and special characters. It also includes buttons for "BACKSP", "ENTER", "LowerCase", and "SPACE". Below the keyboard is a text input field labeled "Your Message Here" with a cursor. A "Cancel" button is at the bottom right.






The test message typed in here will be displayed at the top of the picture.

The following is an example using the data entered above:




Notice that the control variable and its current value is also displayed

The picture location and size can be modified. To change the location, simply drag the picture to the desired location on the user screen by clicking on the top status bar. To resize the picture, just place the cursor on any corner and when the double arrows pop-up if you click on the corner it can be moved to anywhere on the screen. Once a picture has been moved and/or resized, these changes will be used when that picture is called up. The following example shows a setup with (4) pictures.

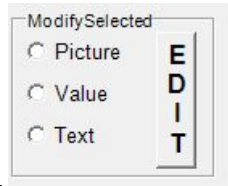
|  |   |
|--|---|
| <p>Variable Picture Control</p> <ul style="list-style-type: none"><li> 1 ~ CHECK COOLANT</li><li> 2 ~ Check for tools in n</li><li> 3 ~ CHECK PART CLAM</li><li> 4 ~ Measure part OD</li></ul> | <p>This example shows 4 pictures. The variable value is set to 1 for the first picture, 2 for the second, 3 for the third and 4 for the fourth. Each picture has a message that will be displayed. If the control variable V177 is set to 3 then this picture will be displayed and the caption CHECK PART CLAMPING will appear in the status bar.</p> <div data-bbox="584 1491 917 1816"></div> |
|--|---|

## Editing/Deleting any picture:

Any of the listed pictures can be edited or deleted. To delete a picture, simply select the picture

to highlight it and click on the Delete button . If a picture was deleted by mistake, click on Cancel to exit the configure screen and the edits won't be saved.

To edit a picture click on the picture to highlight it and then choose either Picture, Value or Text



in the Modify Selected box.

Only one can be edited at a time. If Picture is selected, when the EDIT button is clicked, a new file view will pop-up to allow the selection of a new picture. The variable value and text will not change. The same is true if Value is selected. The keypad pops up and a new value can be entered. Finally the Text can be edited in the same manner. Selecting Text and the clicking on EDIT will pop-up a new Text message keyboard. As with the picture and Variable, only the selected property will be changed. If the changes are not desired, the CANCEL button will exit without saving changes.

## Log Level:

Log Level is a special tool used to determine problems with machine communications. If service is require you may be requested to change the log level to determine the problem. This is very rarely used and would only be used under the direction of Caron Engineering.

# Customer Support

This product was developed by:

Caron Engineering Inc.  
P.O. Box 1529  
1931 Sanford Road  
Wells, Maine 04090

Our website: [www.caron-eng.com](http://www.caron-eng.com)  
Contact us at: [marketing@caron-eng.com](mailto:marketing@caron-eng.com)  
Phone: (207) 646-6071  
FAX : (207) 646 6983

## Caron Engineering, Inc. - End-User License Agreement

This End-User License Agreement ("EULA") is a legal agreement between you, the "LICENSEE" (either an individual user or organization) and the manufacturer, Caron Engineering Inc. (CEI), as it pertains to SOFTWARE. By installing and using the SOFTWARE, you agree to be bound by all of the terms and conditions of this EULA. If you do not agree to the terms of this EULA, you may not install or use the SOFTWARE.

### 1) Definitions:

- i) SOFTWARE - The executable computer files, Dynamic Link Library files, and other computer files written and/or compiled by Caron Engineering, Inc. for the purposes of sending instructions to hardware and/or generating data. The data generated by the software is the sole property of the LICENSEE.
- ii) Single User License - You may install the SOFTWARE on ONE computer only. If the licensee is an organization, it may designate one individual within the organization the right to use the SOFTWARE in this manner.
- iii) Multi-User Licenses - You may install multiple instances of the SOFTWARE on one computer a single location as designated at the time of purchase. The maximum number of installations and matching licenses on any one computer is five (5).
- iv) Site License - A site license applies to an unlimited number of installations as agreed upon between the purchaser and CEI with the distinction that you provide CEI with the Serial Number of each machine to which CEI software will be communicating.
- v) Electronic Documents - Solely with respect to Electronic Documents included with the SOFTWARE, you may make an unlimited number of copies (either in hardcopy or electronic form), provided that such copies shall be used only for internal purposes and are not republished or distributed to any third party.
- vi) License Number - A License Number provided at the time of sale, or at the time you register your software, uniquely identifies each License. This GRANT OF LICENSE is contingent upon the purchase of a License Number from CEI or one of CEI's resellers or dealers or through the automated License Number generation and registration process on the CEI web site. All License Number sales are final.

### 2) Grant of License

- i) Caron Engineering, Inc. hereby grants to you, and you accept, a limited, nonexclusive license to use the Software in machine-readable, object code form only, and the user manuals accompanying the Software (the "Documentation"), only as authorized in this Agreement. For purposes of this Agreement, the "Software" includes any updates, enhancements, modifications, revisions, or additions to the Software made by CEI and made available to end-users directly, indirectly, or through CEI's web site. Notwithstanding the foregoing, CEI shall be under no obligation to provide any updates, enhancements, modifications, revisions, or additions to the Software.

### 3) DESCRIPTION OF OTHER RIGHTS AND LIMITATIONS

- i) Trial Software - Unless explicitly stated by Caron Engineering, Inc in the SOFTWARE, any SOFTWARE installed without a serial number, then notwithstanding other sections of this EULA, you may use the SOFTWARE for evaluation purposed only and you may not redistribute any redistributables.
- ii) Limitations on reverse engineering, de-compilation, and disassembly - You may not reverse engineer, decompile, or disassemble the SOFTWARE, or attempt in any manner to reconstruct or discover any Source Code or underlying algorithms of SOFTWARE provided in object code form only.
- iii) Separation of Components - The SOFTWARE is licensed as a single product. Its component parts may not be separated for use on more than one computer.
- iv) Transfer - You may not transfer, rent, sublease, or lend the SOFTWARE.
- v) Redistribution - You may not redistribute any CEI software, serial number, or license

### 4) TECHNICAL SUPPORT - Caron Engineering, Inc. may provide you with technical support services related to the SOFTWARE ("TECHNICAL SUPPORT"). Any supplemental software code provided to you as part of TECHNICAL SUPPORT shall be considered part of the SOFTWARE and subject to the terms and conditions of this EULA.

- i) With respect to technical information you provide to CEI as part of TECHNICAL SUPPORT, CEI may use such information for its business purposes. CEI will not utilize such technical information in a form that personally identifies you as an individual, a single entity, or a corporation.

- 5) **TERMINATION** - Without prejudice to any other rights, CEI may terminate this EULA if you fail to comply with the terms and conditions of this EULA. In such event, you agree to destroy all copies of the SOFTWARE.
- 6) **COPYRIGHT** - The SOFTWARE is owned by CEI and is protected by United States copyright laws and international treaty provisions.
- 7) **PROPRIETARY RIGHTS** - All copyright, patents, trade secrets, trademarks and other intellectual and property rights in the SOFTWARE are and shall remain the valuable property of CEI. You agree to take all reasonable steps to ensure that the provisions of this agreement are not violated by you or by any person under your control or in your service.
- 8) **EXPORT RESTRICTIONS** - You agree that neither you nor your customers intend to or will, directly or indirectly, export or transmit the SOFTWARE or service that uses the SOFTWARE, to any country to which such export or transmission is restricted by any applicable U.S. regulation or statute, without the prior written consent, if required, of the Bureau of Export Administration of the U.S. Department of Commerce, or such other governmental entity as may have jurisdiction over such export or transmission.
- 9) **MISCELLANEOUS** - If you acquired this product in the United States, the laws of the State of Maine govern this EULA. If this product was acquired outside the United States, then local law may apply. Should you have any questions concerning this EULA, or if you desire to contact CEI for any reason, please write to us through our Web Site ([www.caron-eng.com](http://www.caron-eng.com)) or Caron Engineering, P.O. Box 1529, Wells, ME, 04090, USA
- 10) **LIMITED WARRANTY** - CEI warrants that the SOFTWARE will operate in accordance with its accompanying documentation. This warranty is void if failure of the SOFTWARE has resulted from accident, abuse or misapplication. **YOU ARE THE ONLY BENEFICIARY OF THIS WARRANTY. YOU MAY NOT PASS THIS WARRANTY ON TO OTHERS.** Although CEI has tested the SOFTWARE and reviewed the documentation, this SOFTWARE is licensed "AS IS" and you, the licensee, are assuming the entire risk as to its quality and performance.
- 11) **CUSTOMER REMEDIES** - CEI AND ITS DEALERS entire liability and your exclusive remedy shall be, at CEI's option, either (a) return of the price paid, or (b) repair or replacement of the SOFTWARE that does not meet the LIMITED WARRANTY and which is returned to CEI with a copy of your receipt within the WARRANTY PERIOD. This Limited Warranty is void if failure of the SOFTWARE has resulted from accident, abuse, or misapplication. Outside the United States, neither these remedies nor any product support services offered by CEI are available without proof of purchase from an authorized international source.
- 12) **NO OTHER WARRANTIES** - TO THE MAXIMUM EXTENT PERMITTED BY APPLICABLE LAW, CEI AND ITS DEALERS DISCLAIM ALL OTHER WARRANTIES, EITHER EXPRESS OR IMPLIED, INCLUDING, BUT NOT LIMITED TO, IMPLIED WARRANTIES OF MERCHANTABILITY AND FITNESS FOR A PARTICULAR PURPOSE, WITH REGARD TO THE SOFTWARE PRODUCT. THE LIMITED WARRANTY GIVES YOU SPECIFIC LEGAL RIGHTS. YOU MAY HAVE OTHERS, WHICH VARY FROM STATE/JURISDICTION TO STATE/JURISDICTION.
- 13) **NO LIABILITY FOR CONSEQUENTIAL DAMAGES** - TO THE MAXIMUM EXTENT PERMITTED BY APPLICABLE LAW, IN NO EVENT SHALL CEI OR ITS SUPPLIERS BE LIABLE FOR ANY SPECIAL, INCIDENTAL, INDIRECT, OR CONSEQUENTIAL DAMAGES WHATSOEVER (INCLUDING, WITHOUT LIMITATION, DAMAGES FOR LOSS OF BUSINESS PROFITS, BUSINESS INTERRUPTION, LOSS OF BUSINESS INFORMATION, OR ANY OTHER PECUNIARY LOSS) ARISING OUT OF THE USE OF OR INABILITY TO USE THE SOFTWARE PRODUCT, EVEN IF CEI HAS BEEN ADVISED OF THE POSSIBILITY OF SUCH DAMAGES. BECAUSE SOME STATES AND JURISDICTIONS DO NOT ALLOW THE EXCLUSION OR LIMITATION OF LIABILITY FOR CONSEQUENTIAL OR INCIDENTAL DAMAGES, THE ABOVE LIMITATION MAY NOT APPLY TO YOU.