



Version: 2.0.0.0

User Guide



dataZen Engineering

5 West Hargett Street, Suite 200
Raleigh, North Carolina 27601
USA
support@dataZenEngineering.com



Table of Contents

1. INTRODUCTION	6
1.1 ABOUT MIRA LITE	6
1.2 FEATURES	6
1.3 ORGANIZATION OF THE MANUAL.....	7
2. SYSTEM OVERVIEW	8
3. INSTALLATION	9
3.1 SYSTEM REQUIREMENTS	9
3.2 MIRA LITE INSTALLATION	10
3.2.1 <i>Installation Verification</i>	26
3.3 MIRA LITE UPGRADE PROCESS	27
3.4 UNINSTALLATION PROCESS.....	35
3.4.1 <i>MIRA LITE Uninstallation</i>	35
3.4.2 <i>Microsoft Visual C++ 2010 Uninstallation</i>	37
3.4.3 <i>SQLite Uninstallation</i>	38
4 USING MIRA LITE	39
4.1 MACHINE STATUS.....	39
4.2 MIRA LITE SERVICE	41
4.3 OPERATION TIME	42
4.4 PRODUCED PARTS.....	43
4.4.1 <i>Total Parts</i>	43
4.4.2 <i>Parts made in shift</i>	43
4.5 CURRENT UTILIZATION.....	45
4.6 EXPORT TO PDF/JPEG.....	46
5 HELP	47
5.1 LICENSE	47
5.1.1 <i>Get License</i>	47
5.1.2 <i>Load License</i>	48
5.1.3 <i>Check Validity</i>	48
5.1.4 <i>About</i>	49
6 FREQUENTLY ASKED QUESTIONS	50
7 TERMS AND CONDITIONS	55
8 TECHNICAL SUPPORT	62



Table of Figures

Figure 1: About MIRA LITE 6

Figure 2: System Overview 8

Figure 3: Setting Windows Mode 10

Figure 4: Installation- .NET 4.0 Framework Installation 11

Figure 5: THINC Startup Installation-1 11

Figure 6: THINC Startup Installation-2 12

Figure 7: THINC Startup Installation-3 12

Figure 8: THINC Startup Installation-4 13

Figure 9: THINC Startup Installation-5 13

Figure 10: THINC Startup Installation-6 14

Figure 11: SQLite Installation-1 15

Figure 12: SQLite Installation- 2 15

Figure 13: SQLite Installation- 3 16

Figure 14: SQLite Installation- 4 16

Figure 15: SQLite Installation- 5 17

Figure 16: SQLite Installation- 6 17

Figure 17: SQLite Installation- 7 18

Figure 18: SQLite Installation- 8 18

Figure 19: MIRA LITE Installation 19

Figure 20: MIRA LITE Installation-1 19

Figure 21: MIRA LITE Installation-2 20

Figure 22: MIRA LITE Installation- Important Information 20

Figure 23: MIRA LITE Installation-User Configuration 21

Figure 24: MIRA LITE Installation- Select installation folder 21

Figure 25: Installation- Click on “Install” to continue 22

Figure 26: MIRA LITE Installation- In progress 22

Figure 27: MIRA LITE Installation- Machine details 23

Figure 28: MIRA LITE Installation in process 23

Figure 29: THINC Startup Service 24

Figure 30: MIRA LITE Installation- In Process 24

Figure 31: MIRA LITE Installation Complete 25



Figure 32: MIRA LITE Application-UI..... 25

Figure 33: Installation Verification 1 26

Figure 34: Installation Verification-2..... 26

Figure 35: MIRA LITE Upgrade-Installation Wizards..... 27

Figure 36: MIRA LITE Upgrade- Read Me 28

Figure 37: MIRA LITE- InstallShield Wizard..... 28

Figure 38: MIRA LITE Installation 29

Figure 39: MIRA LITE Installation- Confirm Prerequisites..... 29

Figure 40: MIRA LITE Installation-User Configuration 30

Figure 41: MIRA LITE Installation- Select installation folder 30

Figure 42: Installation- Click on “Install” to continue..... 31

Figure 43: MIRA LITE Installation- In progress 31

Figure 44: MIRA LITE Installation- Machine details 32

Figure 45: MIRA LITE Installation- In progress 32

Figure 46: THINC Startup Setting 33

Figure 47: MIRA LITE Installation process 33

Figure 48: Installation Complete..... 34

Figure 49: MIRA LITE Upgrade interrupt-Finish 34

Figure 50: Uninstall MIRA LITE-1 35

Figure 51: Uninstall MIRA LITE-2 35

Figure 52: Uninstallation- Support Info 36

Figure 53: MIRA LITE Uninstallation Confirmation 36

Figure 54: Uninstallation Complete 37

Figure 55: Microsoft Visual C++ 2010 Uninstallation 37

Figure 56: SQLite Uninstallation-1..... 38

Figure 57: SQLite Uninstallation-2..... 38

Figure 58: Machine Status 39

Figure 59: Machine Status Time 40

Figure 60: B-Level Alarms 40

Figure 61: MIRA LITE Service in THINC Startup Settings 41

Figure 62: MIRA LITE Service Status 41

Figure 63: Operation Time..... 42

Figure 64: Total Parts Produced..... 43



Figure 65: Select 16 hours duration	44
Figure 66: Current Utilization.....	45
Figure 67: Export to PDF/JPEG.....	46
Figure 68: Save the report.....	46
Figure 69: Get License.....	47
Figure 70: Send Hardware ID to dataZen	47
Figure 71: Load License	48
Figure 72: Check License Validity	48
Figure 73: Check Application Version	49
Figure 74: Check Application Version	49
Figure 75:.Net Framework error resolution	52
Figure 76: Installation of .NET Framework.....	53
Figure 77: MIRA LITE Installation	54

1. Introduction

The following section describes the details of the MIRA LITE™ application, including: Application Features, Installation, Use and Administration.

1.1 About MIRA LITE

MIRA LITE is designed to work with Okuma THINC controls. The application is equipped with a simple, easy to use interface that provides machine operational data without server or networking needs. It can also be connected to other controls.

MIRA LITE automatically collects and monitors machine status, including: Running, Operating, Cutting and Alarm. Part Count and Utilization are also provided in graphical format for a time period chosen by the operator.

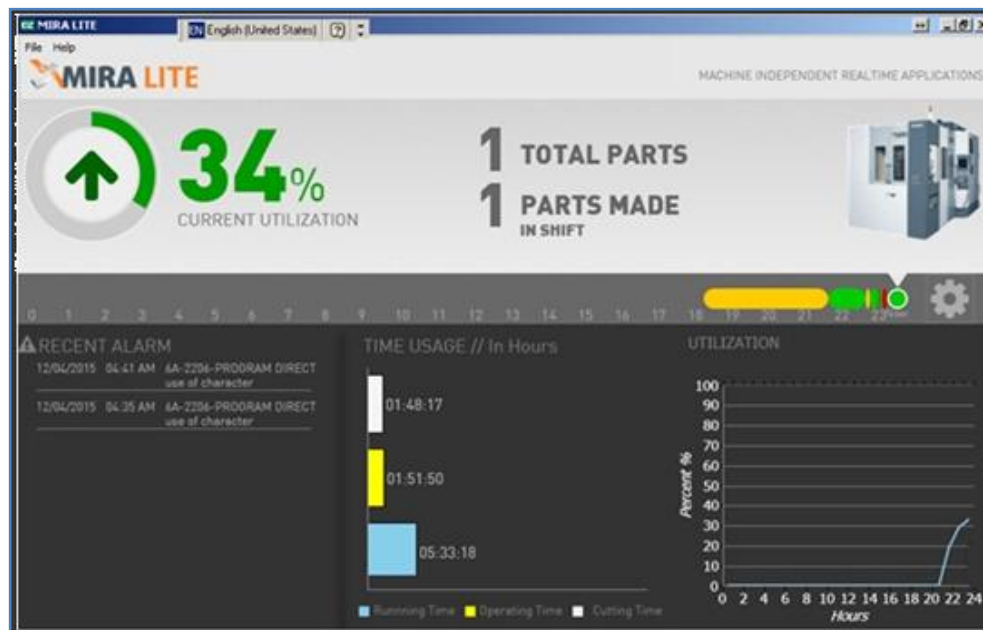


Figure 1: About MIRA LITE

1.2 Features

- Simple interface that provides a wealth of event information.
- Display machine utilization % for a chosen duration.
- Shows the current state of the machine.
- Display machine operational data.
- Export report screen in pdf/ jpeg format.

1.3 Organization of the Manual

Section 2: System Overview

This section covers the overall system architecture, describes various components of the system, along with the different user access levels. The aim of this section is to give the user an overview of the components of the application.

Section 3: Installation

This section covers System Requirements, Installation Process, Uninstallation Process and Troubleshooting, if applicable for each component of the application.

The section will allow the administrator and/or IT department to schedule installation of the components based on the downtime, shift schedules etc. of the plant.

Section 4: Using Application

This section covers the user interface for each feature along with their actions, if any, that can be performed by regular users of the application.

Section 5: Help

This section covers licensing for MIRA LITE, checking application validity and application version details.

Section 6: Frequently Asked Questions

This section covers frequently asked questions and their answers by users.

Section 7: Terms and Conditions

This section covers terms and conditions of using the application and applicable laws.

Section 8: Technical Support

This section provides contact information.

2. System Overview

The section covers the overall system architecture and identifies the various components of the application. Installation and operation of each component are discussed in more detail in the following sections.

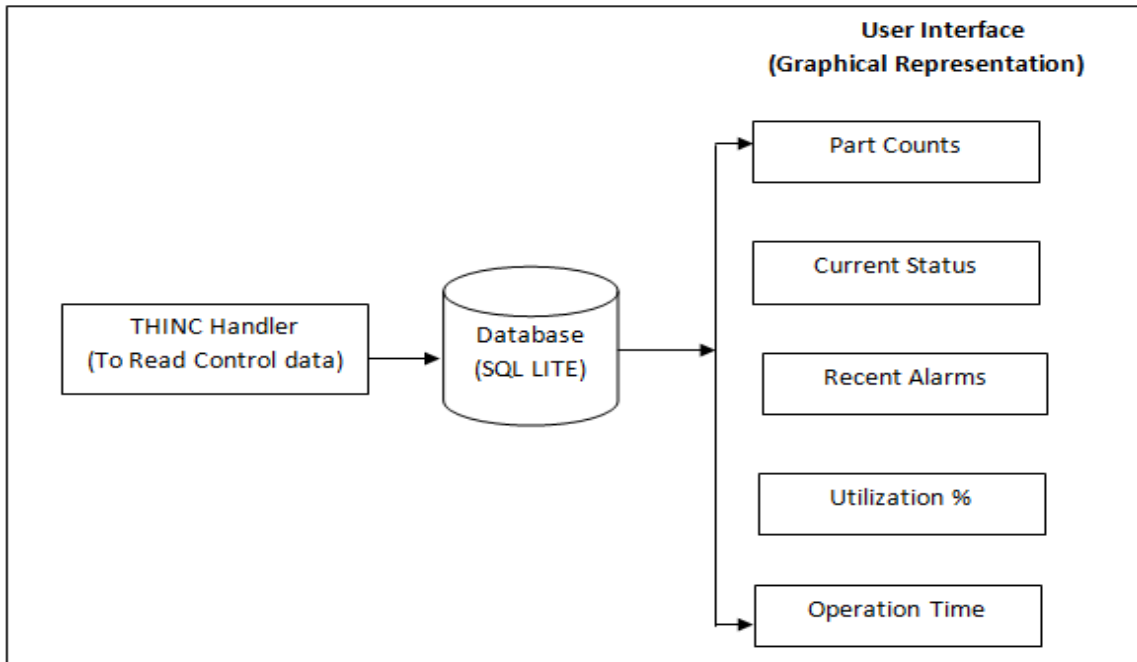


Figure 2: System Overview

As depicted by the diagram above.

- The application collects data from THINC handler and stores it in a database.
- In the application window, the operator can see the following details:
 - Produced part count for the selected duration.
 - Machine current status.
 - Recently generated alarms for the control.
 - Utilization for selected period in %.
 - Total operation time of the machine for selected duration.

3. Installation

3.1 System Requirements

- THINC API (Lathe or Machining Center) Version 1.15.0.0 and above.
- Okuma THINC Startup Service
- Microsoft Visual C++ 2010 Redistributable Package
- Microsoft .NET Framework 4.0
- SQLite
- OSP Controls (P-100 II / P-200 / P-300)

Note: During installation, setup will prompt user to install the following prerequisites if those are not already installed on the machine.

- Okuma THINC Startup Service
- Microsoft Visual C++ 2010 Redistributable Package
- Microsoft .NET Framework 4.0
- SQLite

3.2 MIRA LITE Installation

MIRA LITE installation is divided into two parts: setup will install prerequisites first, and then it will continue with the MIRA LITE installation.

1. Install the application in Windows-only mode (*NOTE: the NC software should not be running*). To run the software on Windows-only mode follow the steps below :
 - a. Restart the computer.
 - b. When the NC software starts, click on the escape key and then click on cancel.



Figure 3: Setting Windows Mode

2. Copy the MIRA LITE installation folder to the P-control using USB drive.
3. Open the installation folder and double click on “Setup.exe”
4. Once clicked on “Setup” installer will check if Okuma THINC Startup Service, .NET Framework 4.0, Microsoft Visual C++ 2010 Redistributable Package is installed on the machine.

5. If any of the prerequisite is not installed on the machines, setup will install those prerequisites and continue with the MIRA LITE installation.

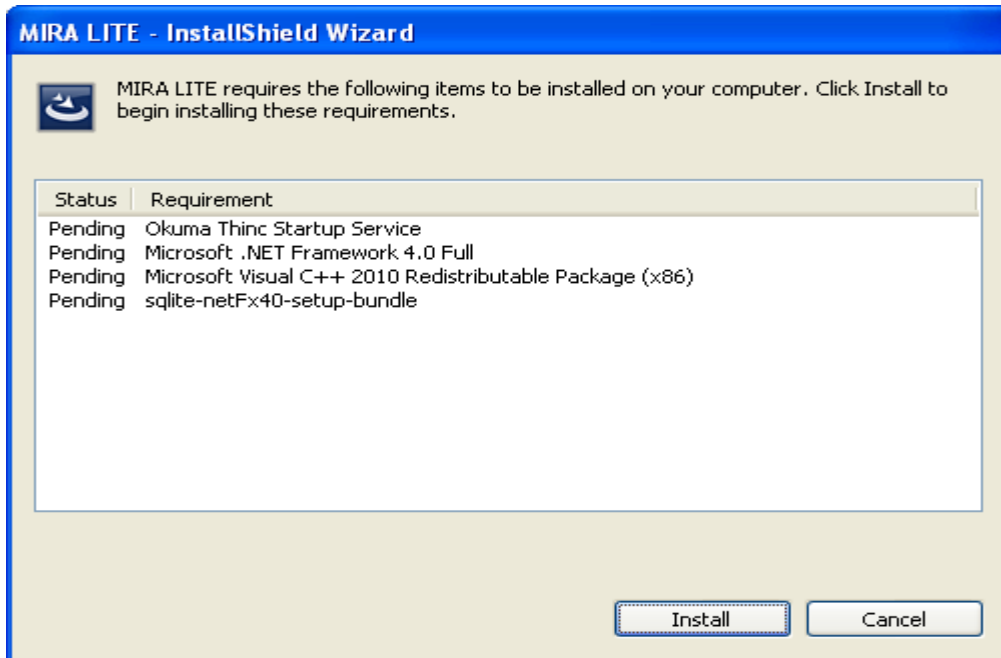


Figure 4: Installation- .NET 4.0 Framework Installation

6. Follow the instruction provided in the setup wizard to install Okuma THINC Startup Service.

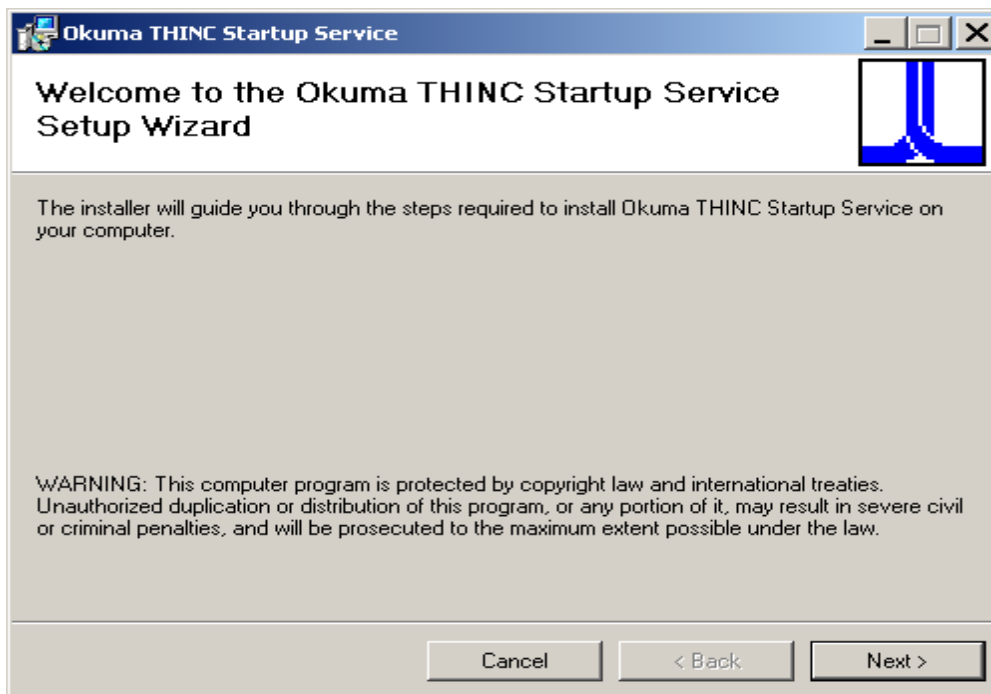


Figure 5: THINC Startup Installation-1

7. Click on “desktop, “Start Menu” and “Vertical Function Key” and click on Next button.

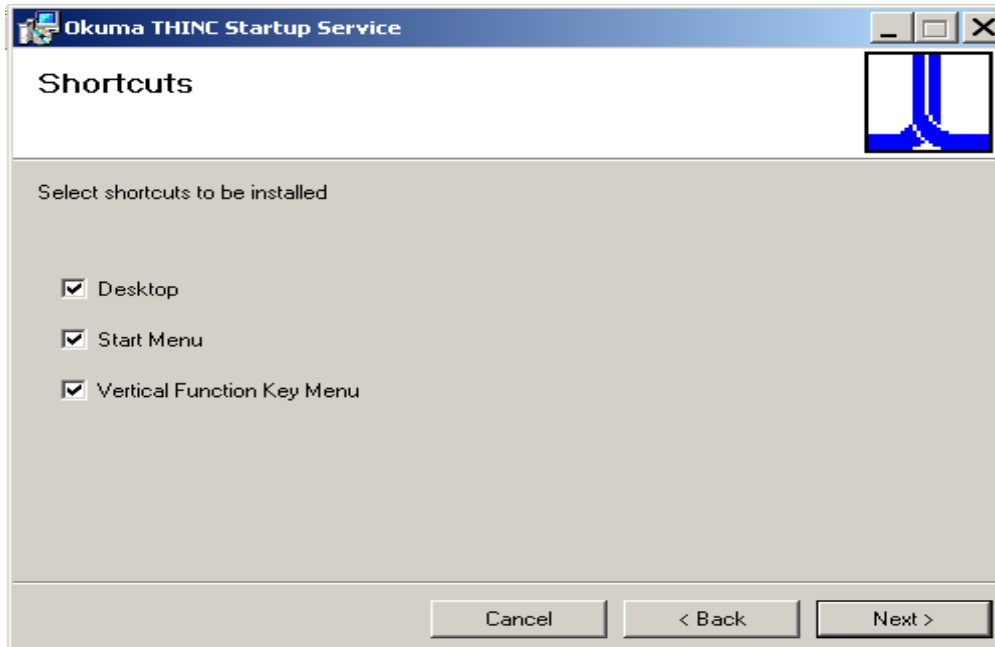


Figure 6: THINC Startup Installation-2

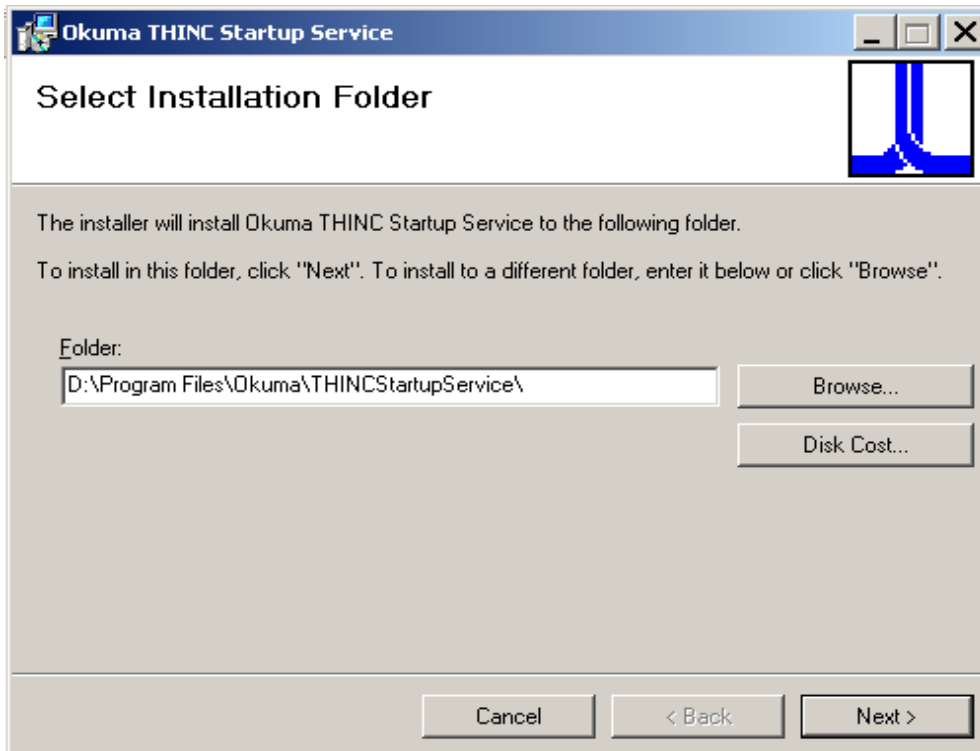


Figure 7: THINC Startup Installation-3

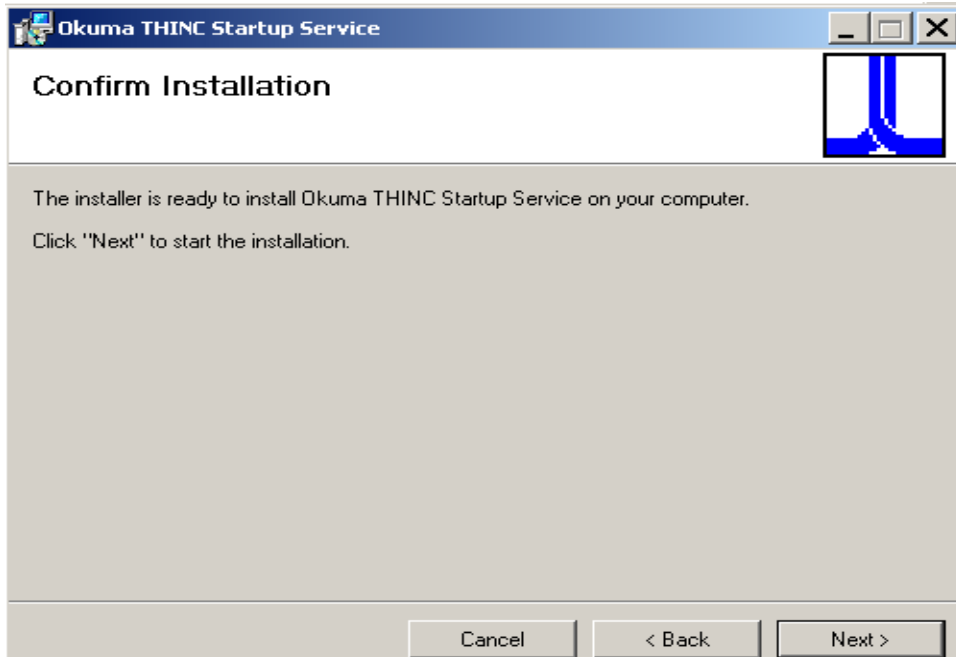


Figure 8: THINC Startup Installation-4

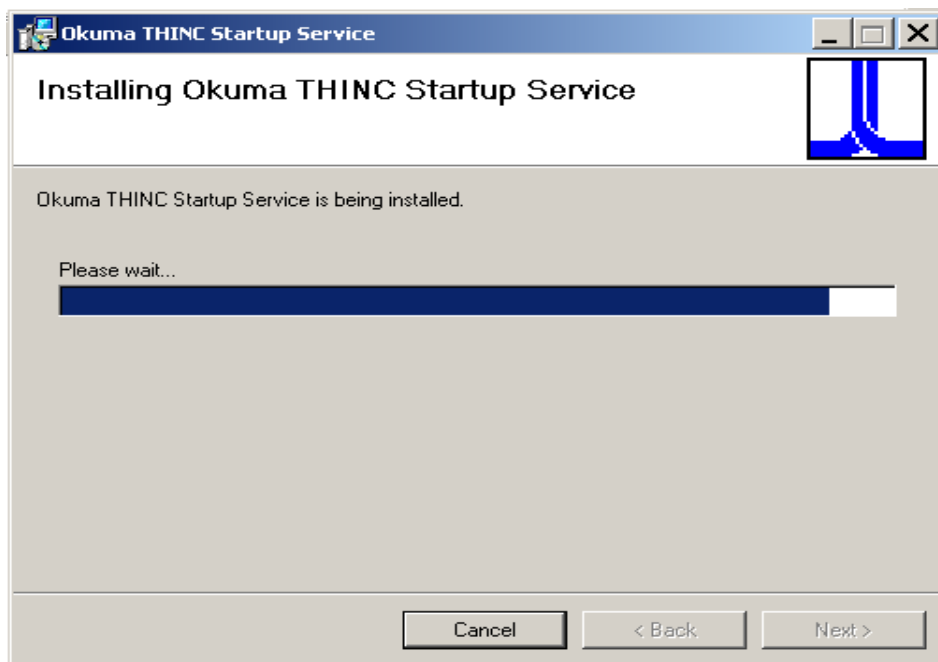


Figure 9: THINC Startup Installation-5

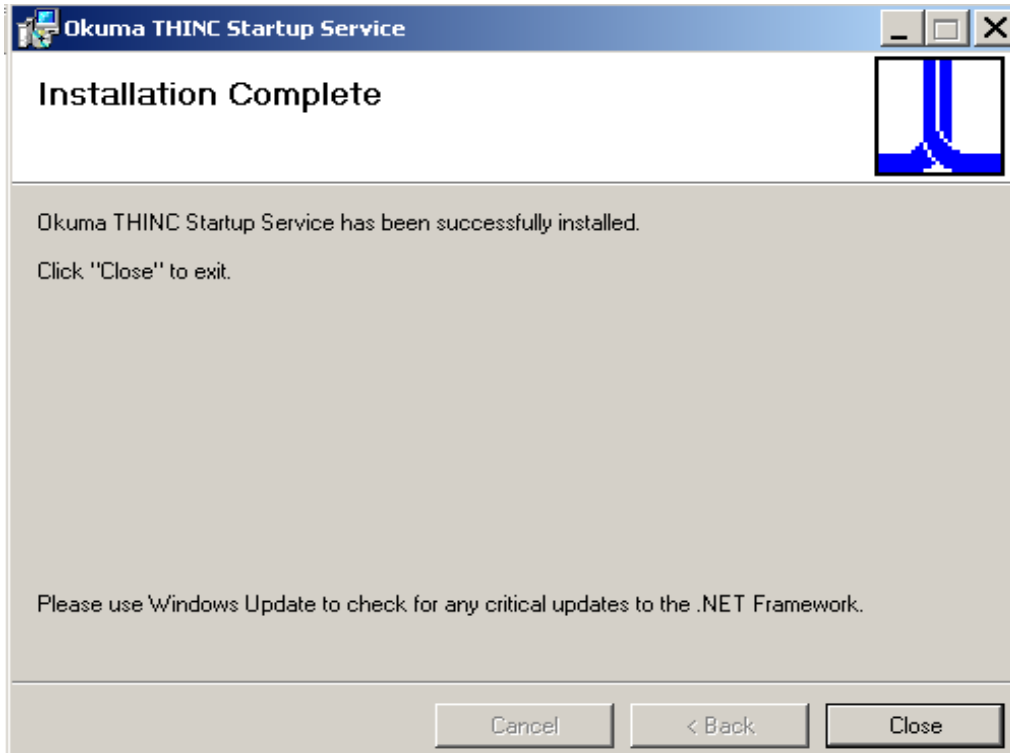


Figure 10: THINC Startup Installation-6

8. Once the Okuma THINC Startup is installed successfully setup will continue with Microsoft .NET Framework 4.0 and Microsoft Visual C++ 2010 Redistributable Package.

***Note:** Microsoft .NET Framework 4.0 and Microsoft Visual C++ 2010 Redistributable Package will be installed in a background and user need not follow any other steps.*

9. Once the Microsoft .NET Framework 4.0 and Microsoft Visual C++ 2010 Redistributable Package successfully installed, setup will continue with SQLITE installation.
10. Please follow the steps provided in the setup wizard.

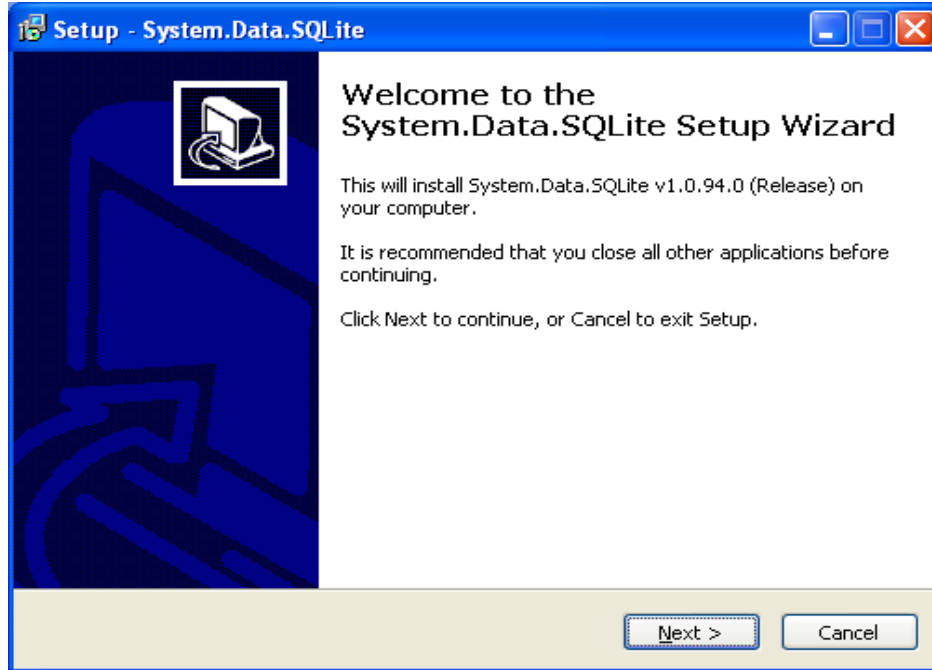


Figure 11: SQLite Installation-1

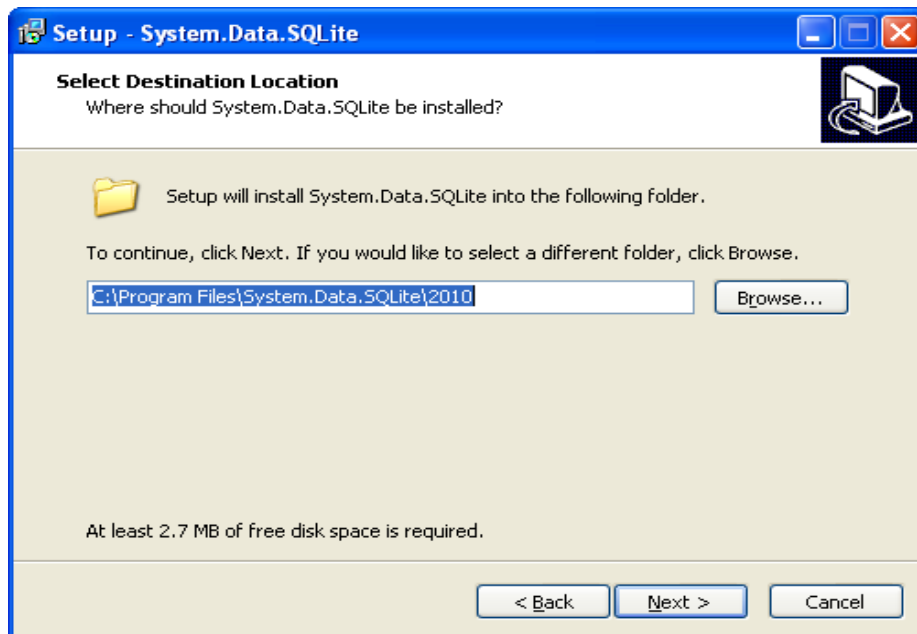


Figure 12: SQLite Installation- 2

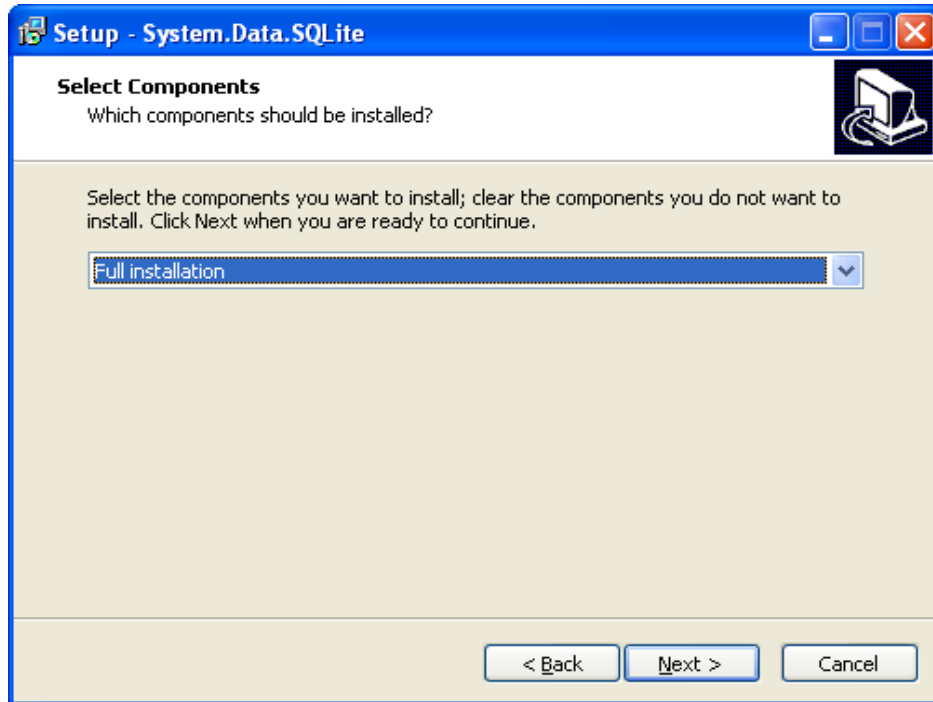


Figure 13: SQLite Installation- 3

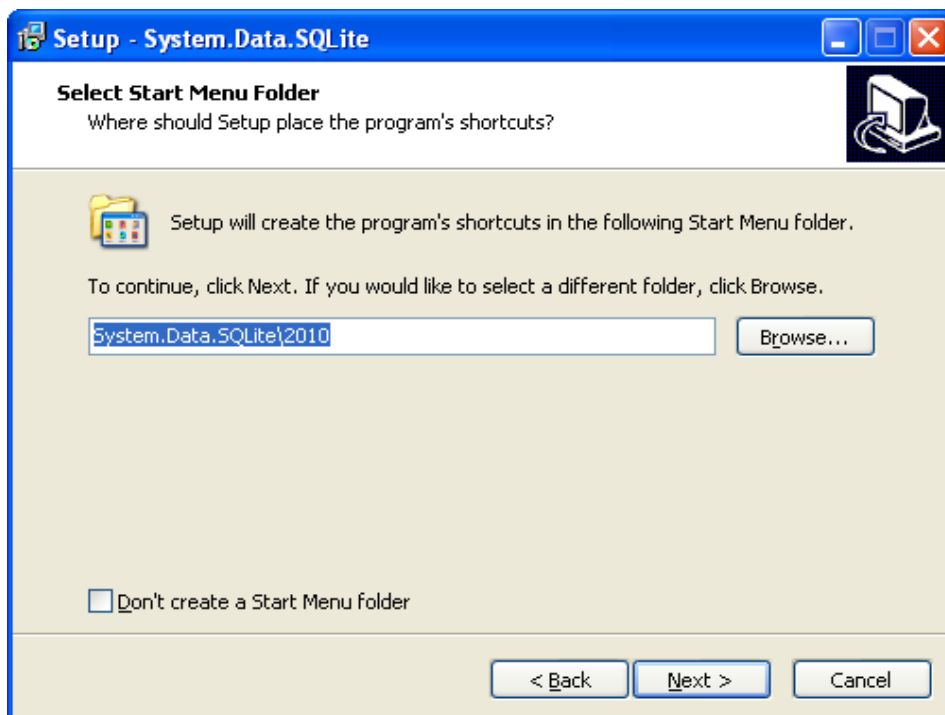


Figure 14: SQLite Installation- 4

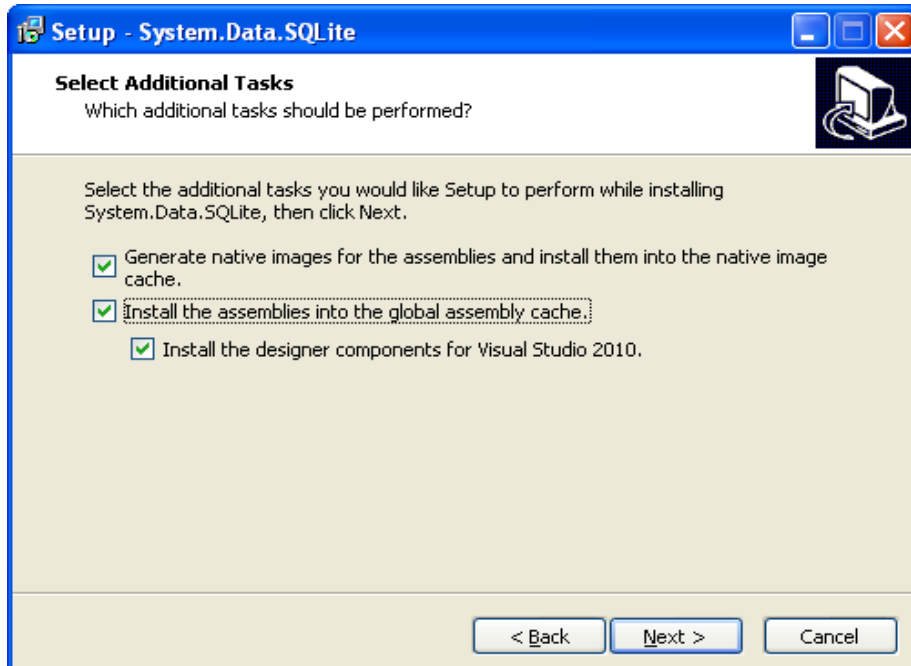


Figure 15: SQLite Installation- 5

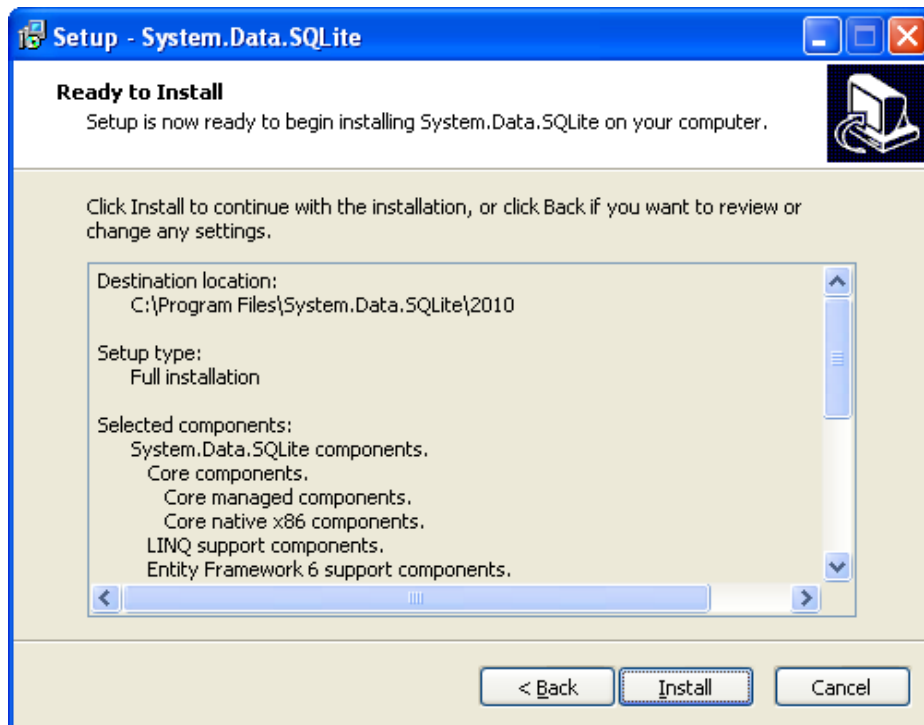


Figure 16: SQLite Installation- 6

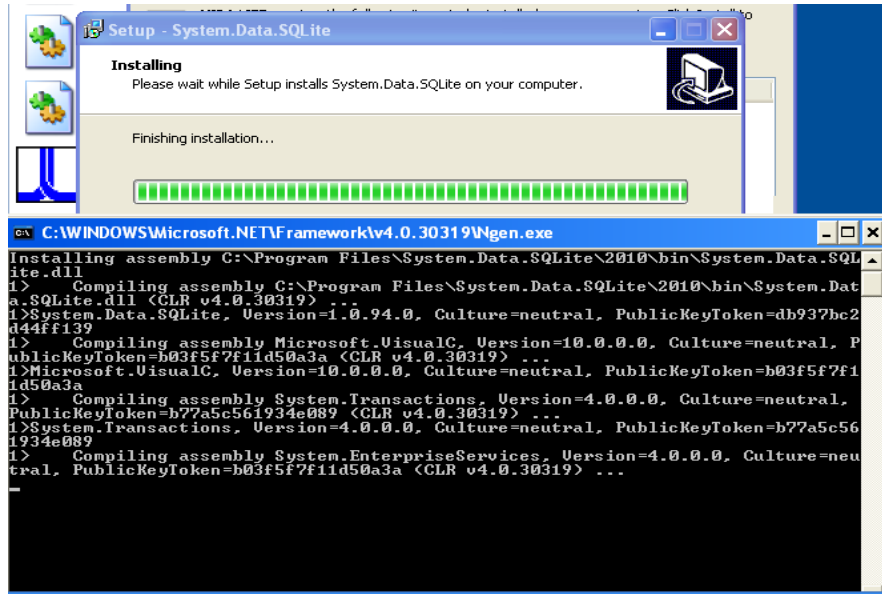


Figure 17: SQLite Installation- 7

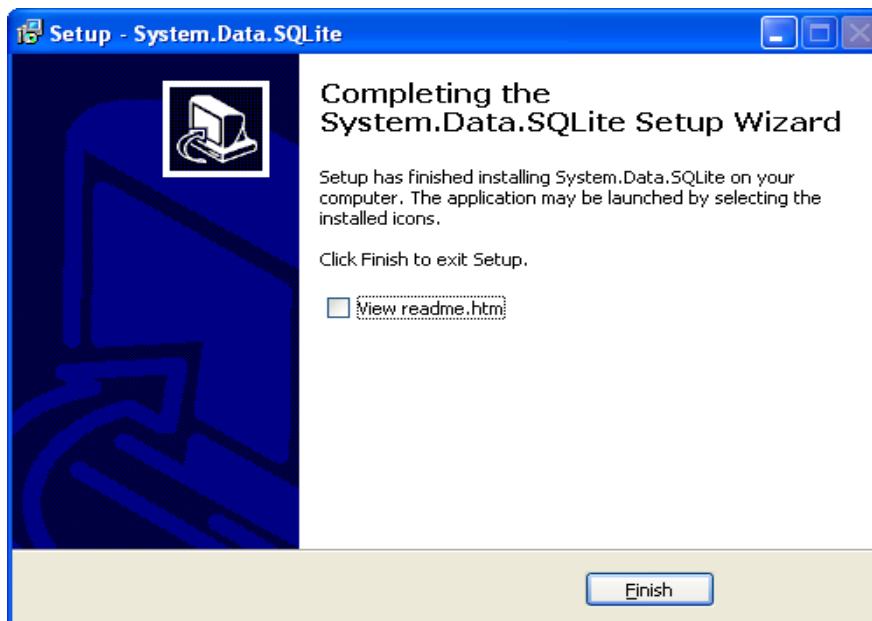


Figure 18: SQLite Installation- 8

11. After SQLITE installation, setup will continue with the MIRA LITE Installation.

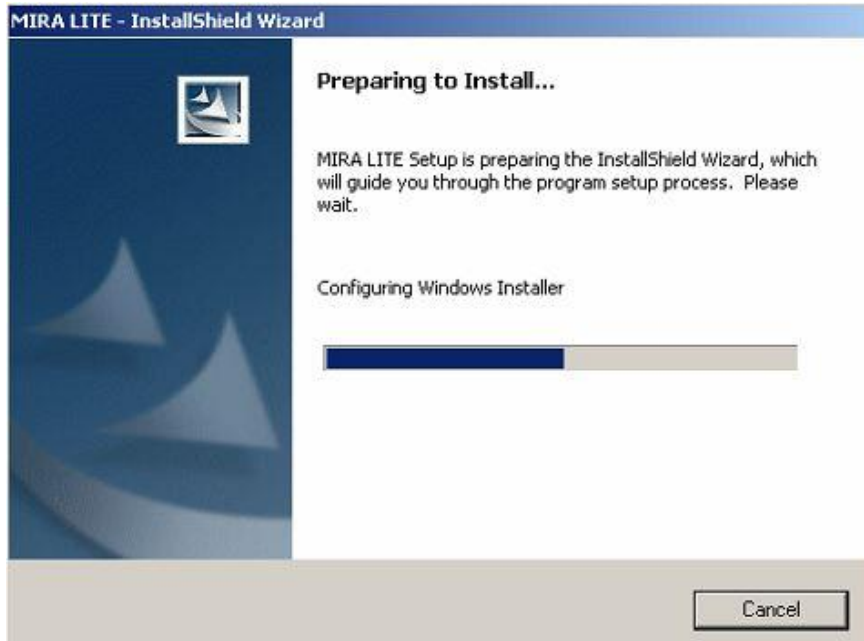


Figure 19: MIRA LITE Installation

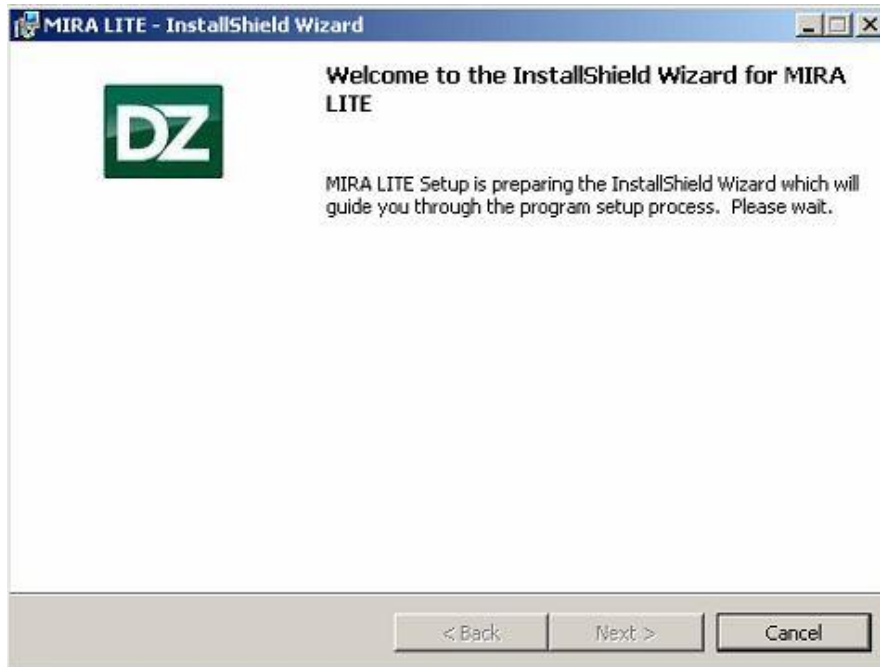


Figure 20: MIRA LITE Installation-1



12. Click on **'Next'** to continue with the installation of MIRA LITE.

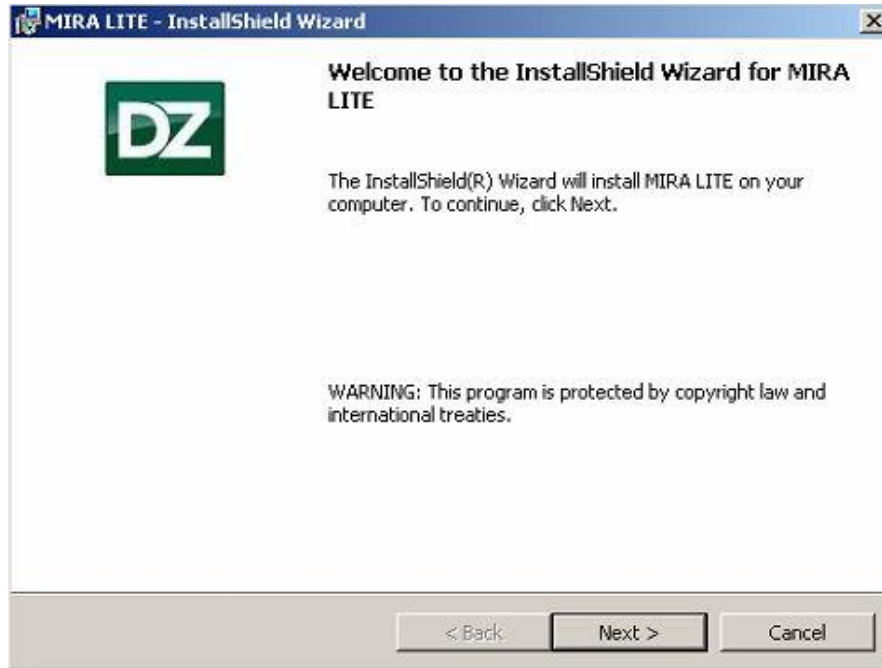


Figure 21: MIRA LITE Installation-2

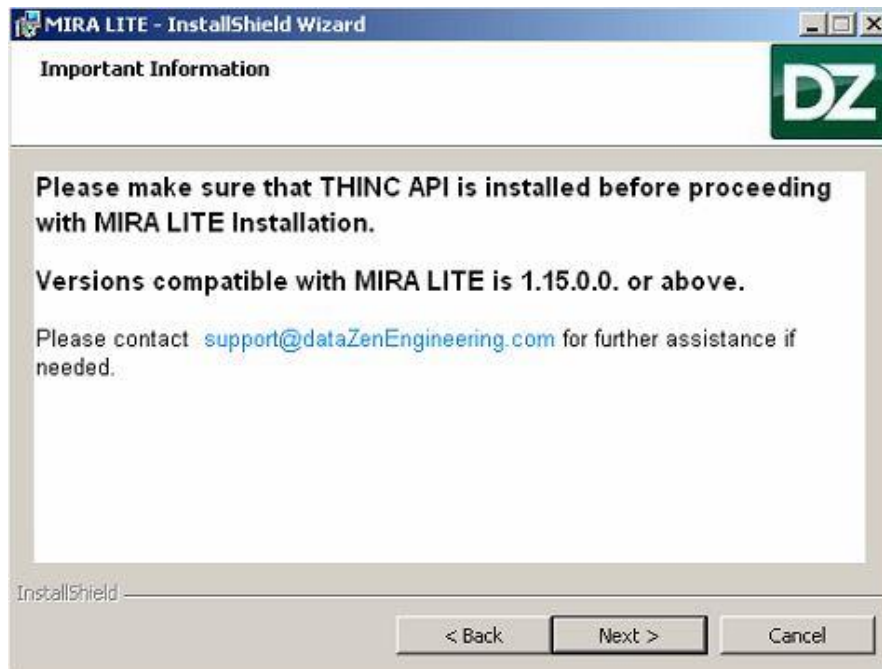


Figure 22: MIRA LITE Installation- Important Information

13. Please enter the User Name and Organization.
14. User Name can be Machine name, Operator name, etc. and Organization should be the company name.

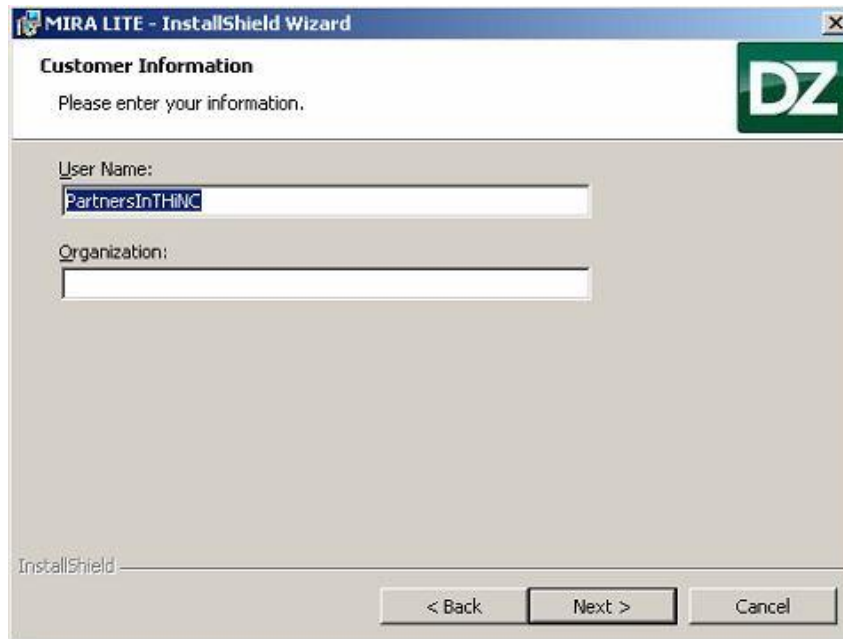


Figure 23: MIRA LITE Installation- User Configuration

15. The default location for MIRA LITE application installation is “D:\Program Files\dataZen\MIRA LITE\”. The user may change the installation location by click on the **Browse** button and selecting the desired location of installation and then click ‘**Next**’ to continue installation.

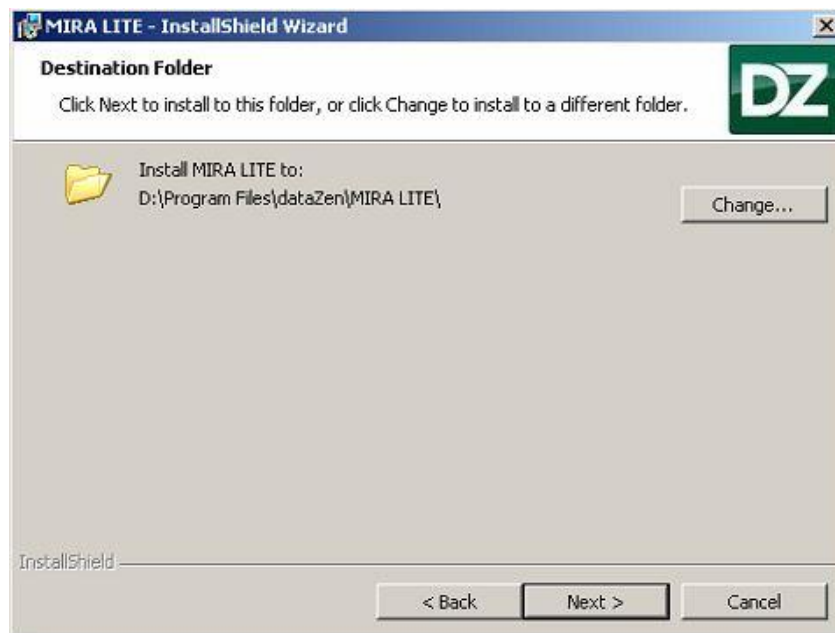


Figure 24: MIRA LITE Installation- Select installation folder

16. Click on “Install” to continue the installation.

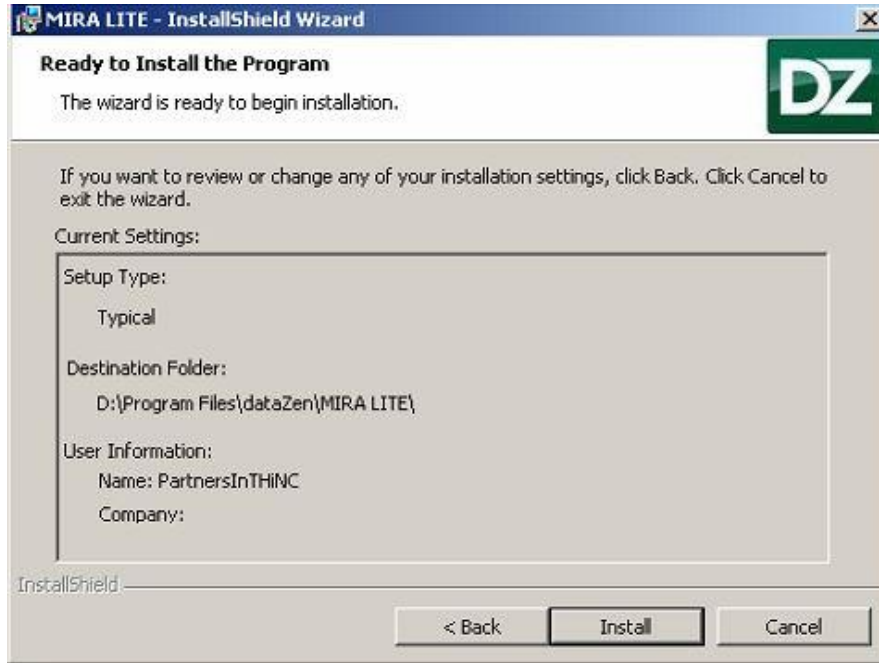


Figure 25: Installation- Click on “Install” to continue



Figure 26: MIRA LITE Installation- In progress

17. Read the machine information and click on 'Next' to continue.

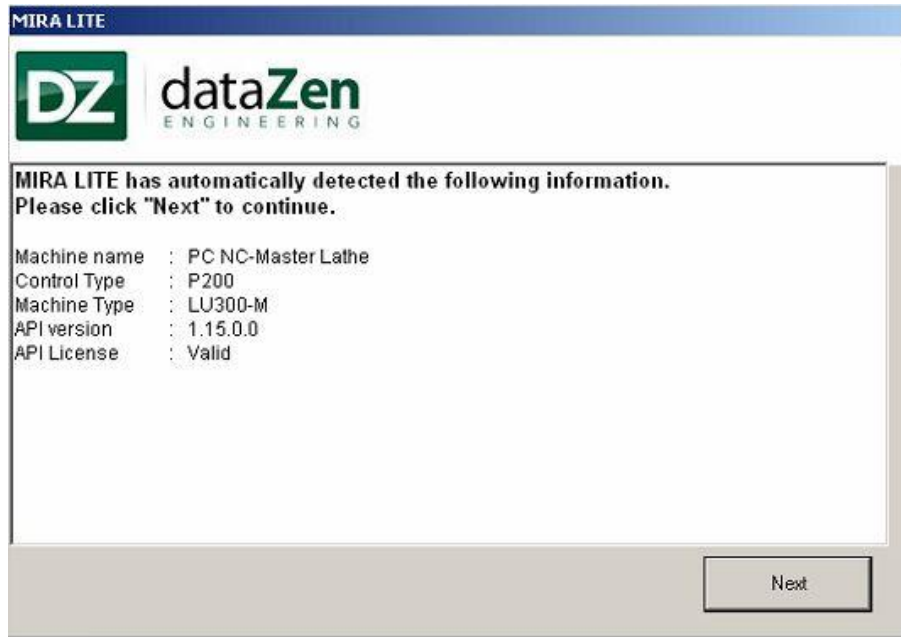


Figure 27: MIRA LITE Installation- Machine details

18. MIRA LITE Service gets added to the THINC Startup Service monitor.

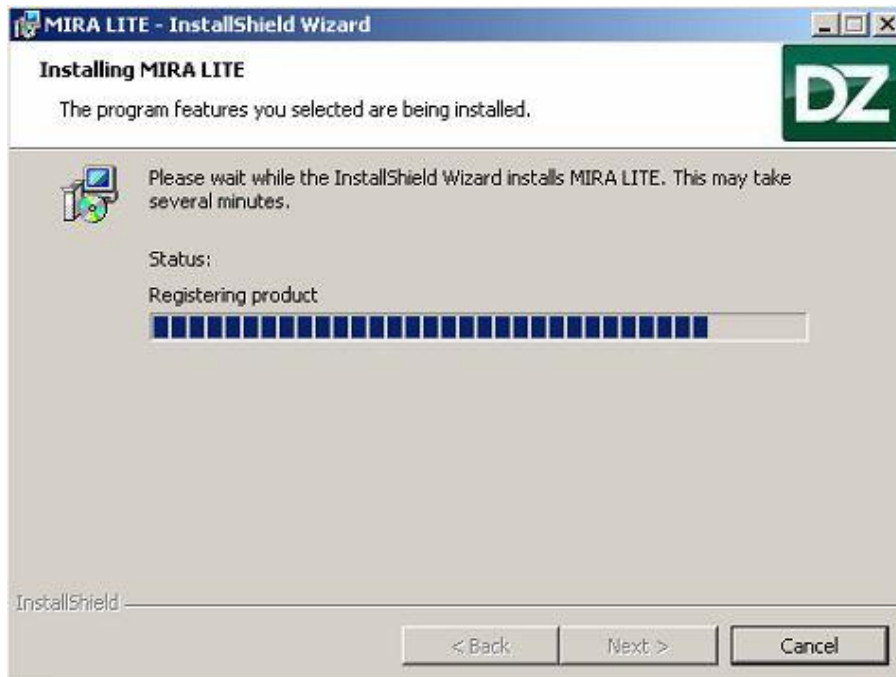


Figure 28: MIRA LITE Installation in process

19. MIRA LITE Services gets added to the THINC Startup Setting panel.

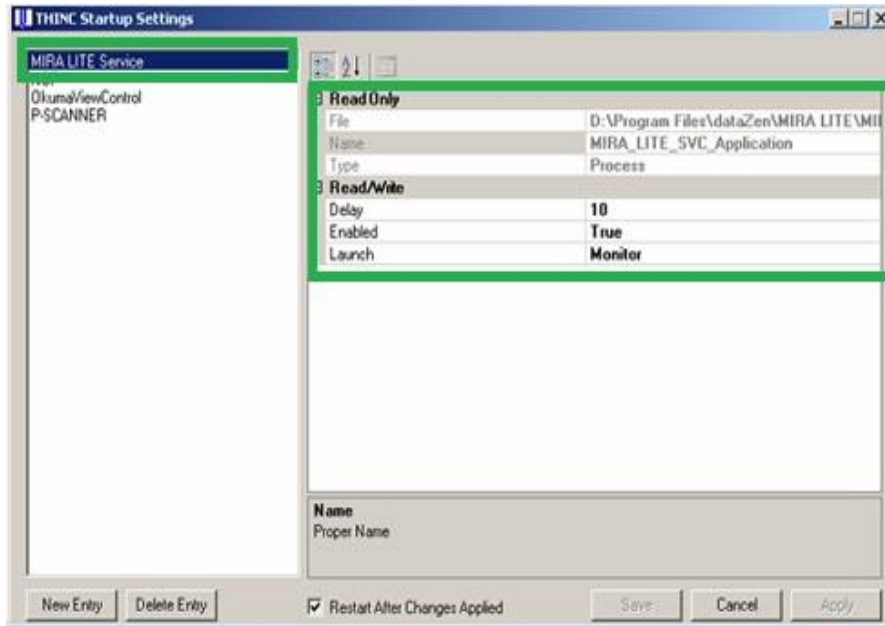


Figure 29: THINC Startup Service

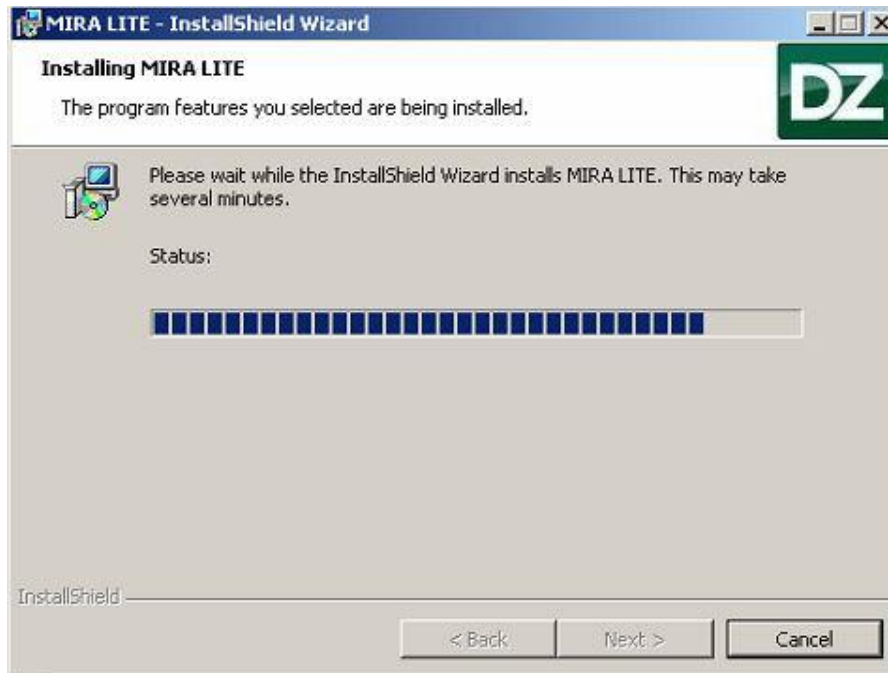


Figure 30: MIRA LITE Installation- In Process

20. Click on ‘Finish’ to complete the installation.

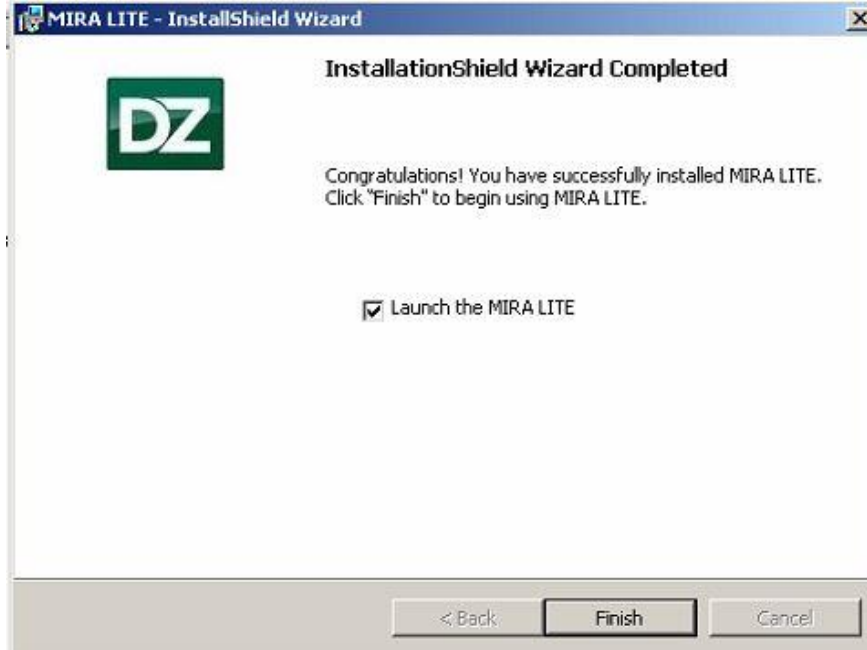


Figure 31: MIRA LITE Installation Complete

21. After “Launch the MIRA LITE” checkbox is checked, the application gets launched automatically and the home page of MIRA LITE appears.

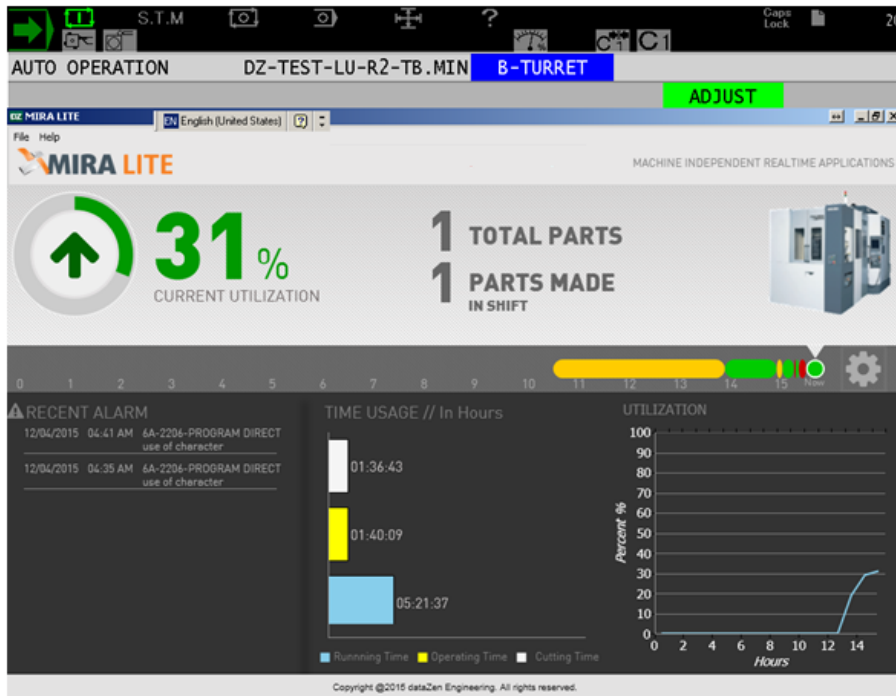


Figure 32: MIRA LITE Application-UI

3.2.1 Installation Verification

1. Click on the ‘MIRA LITE’ key located on the Vertical Menu Bar to launch the application.

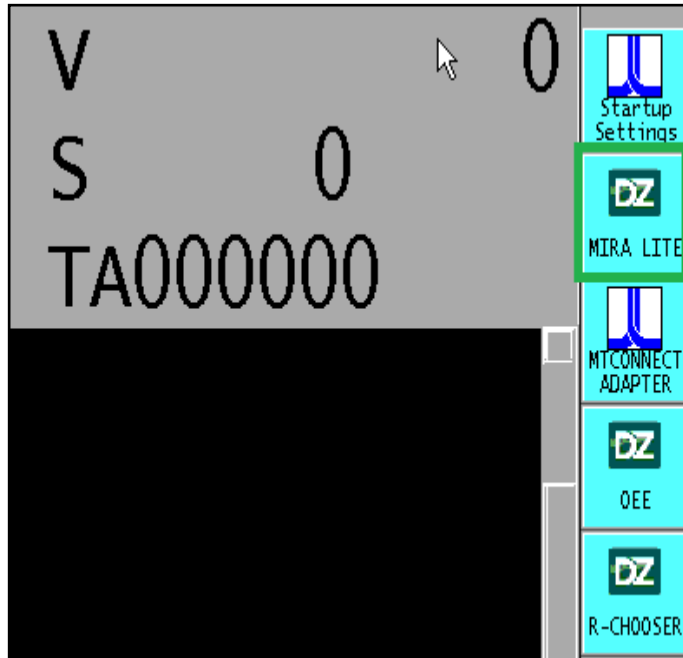


Figure 33: Installation Verification 1

2. The application can also be launched from the start menu.
3. Go to “Start→All Programs→dataZen→MIRA LITE→MIRA LITE

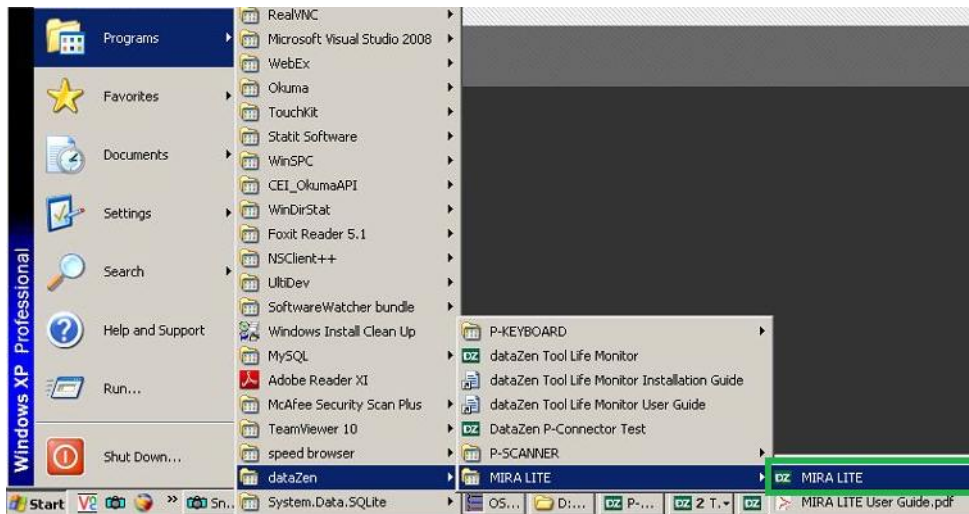


Figure 34: Installation Verification-2

Note: For the first time use of MIRA LITE, a 30 day trial license is provided. Once the trial license has expired, follow the licensing procedure in [Section 5.1 License](#).

3.3 MIRA LITE Upgrade Process

Upgrade MIRA LITE to a newer version includes copying data from a previously installed version. To upgrade the MIRA LITE Version 2.0.0.0 over MIRA LITE Version 1.0.0.0, follow the steps below:

Note: Before starting the MIRA LITE upgrade process, it is mandatory that “Machine Cycle is stopped before Upgrade(s)”

1. Double click on the MIRA LITE Setup Installer to start the upgrade process.

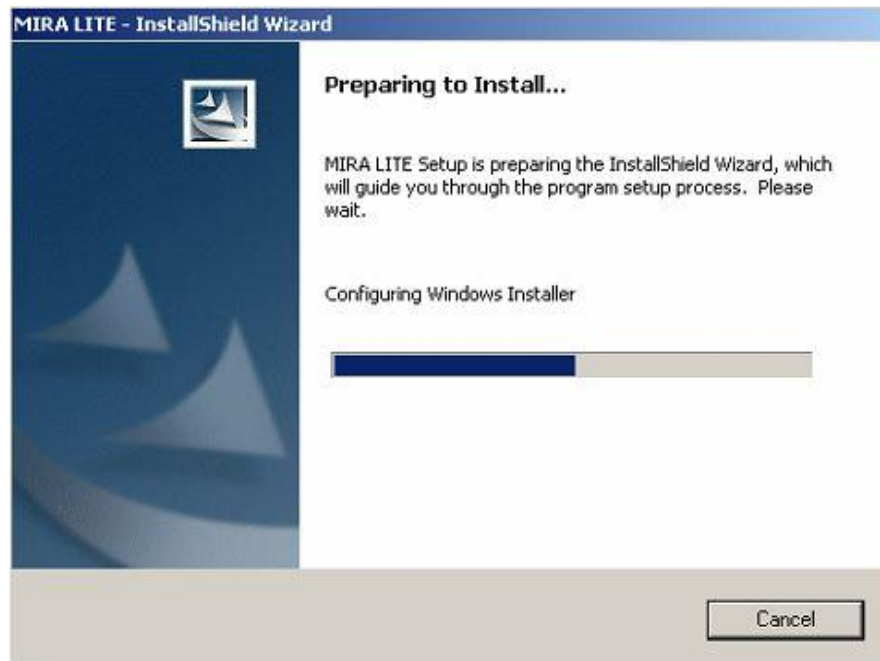


Figure 35: MIRA LITE Upgrade-Installation Wizards



2. Read the **Read-Me** information and click on **Upgrade**.



Figure 36: MIRA LITE Upgrade- Read Me

3. Please click “Next” button to proceed with the installation of MIRA LITE.



Figure 37: MIRA LITE- InstallSheild Wizard



4. Click on 'Next' to continue with the installation.

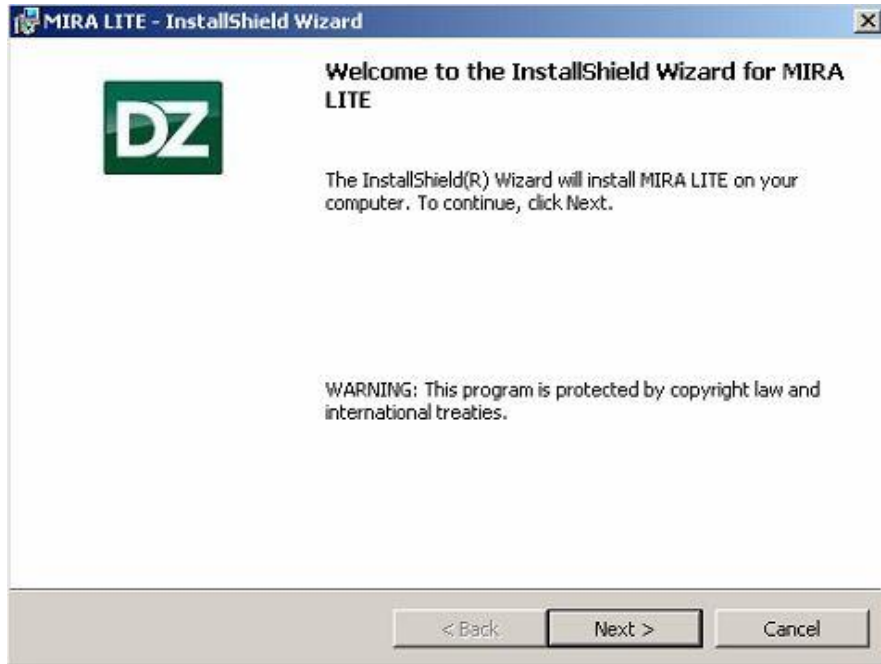


Figure 38: MIRA LITE Installation

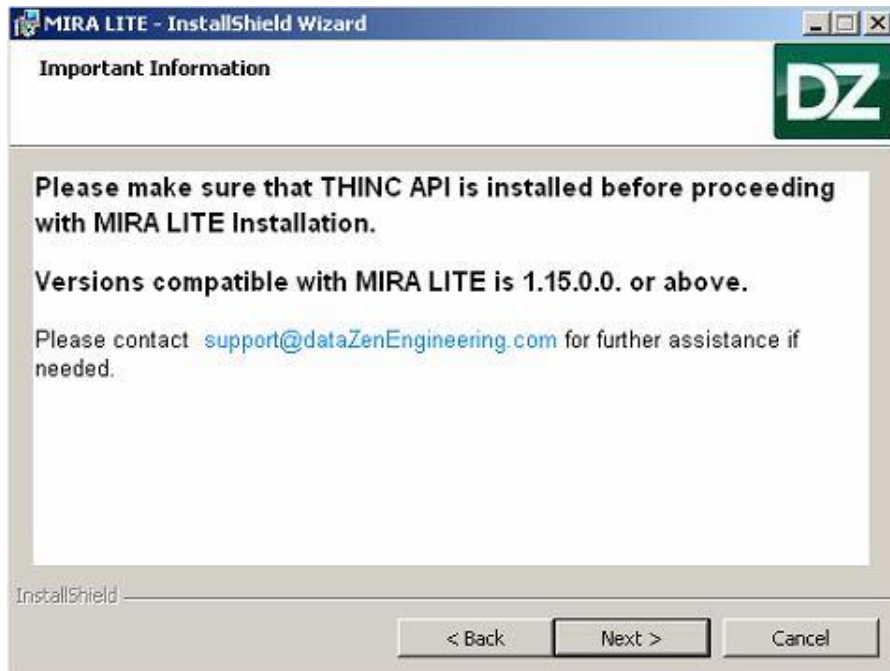


Figure 39: MIRA LITE Installation- Confirm Prerequisites

5. Please enter the User Name and Organization.
6. User Name can be Machine name, Operator name, etc. and Organization should be the company name.

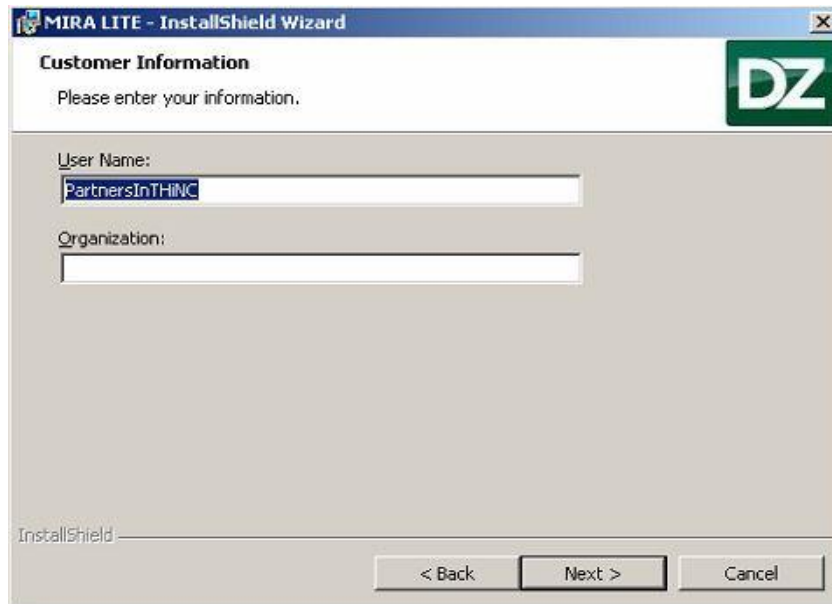


Figure 40: MIRA LITE Installation-User Configuration

7. The default location for MIRA LITE application installation is “D:\Program Files\dataZen\MIRA LITE\”. The user may change the installation location by click on the Browse button and selecting the desired location of installation and then click ‘Next’ to continue installation.

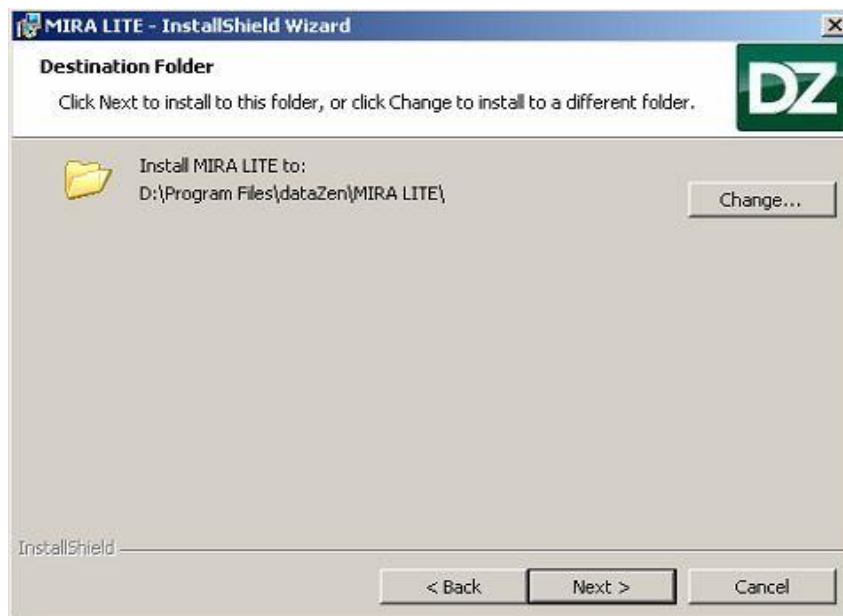


Figure 41: MIRA LITE Installation- Select installation folder



8. Click on “Install” to continue the installation.

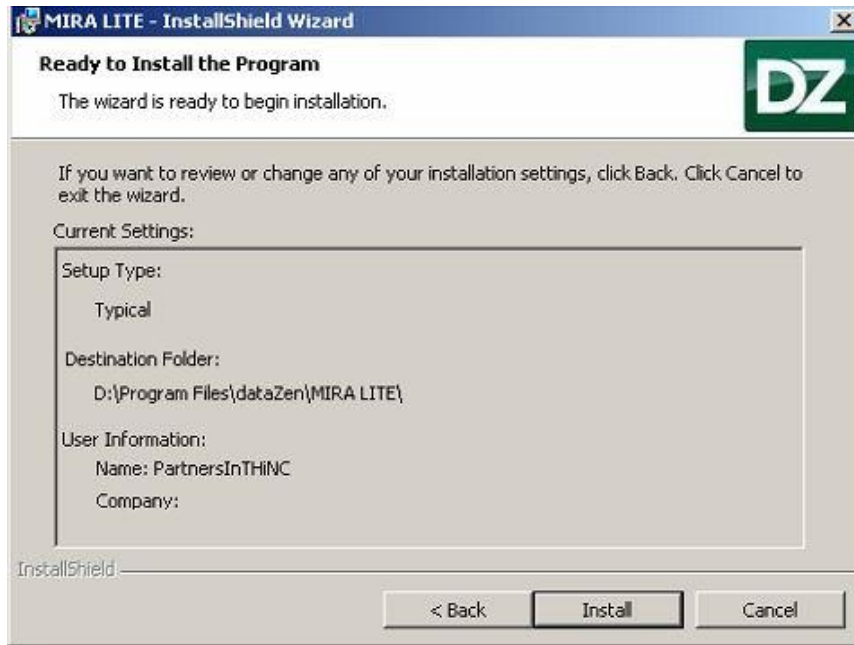


Figure 42: Installation- Click on “Install” to continue

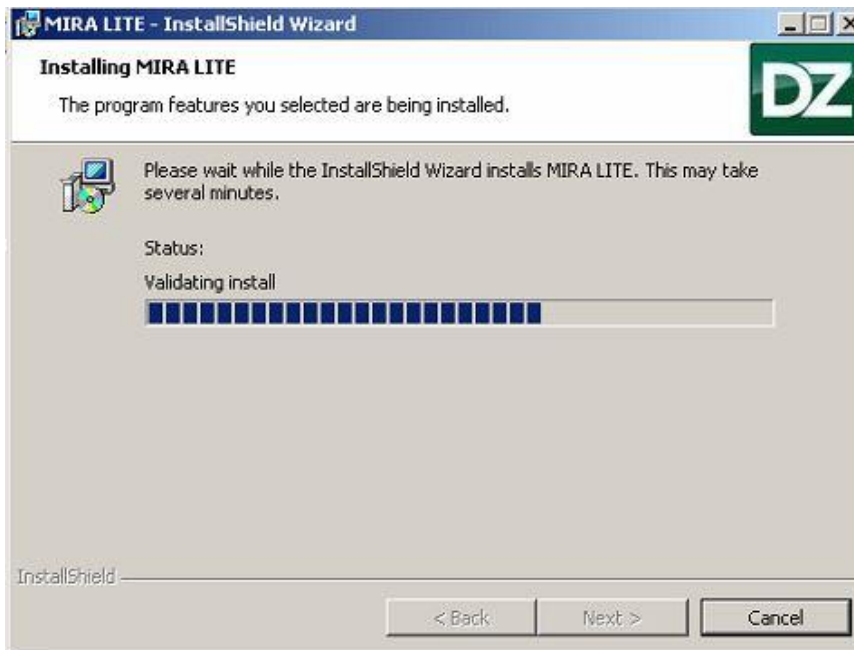


Figure 43: MIRA LITE Installation- In progress

9. Read the machine information and click on 'Next' to continue.

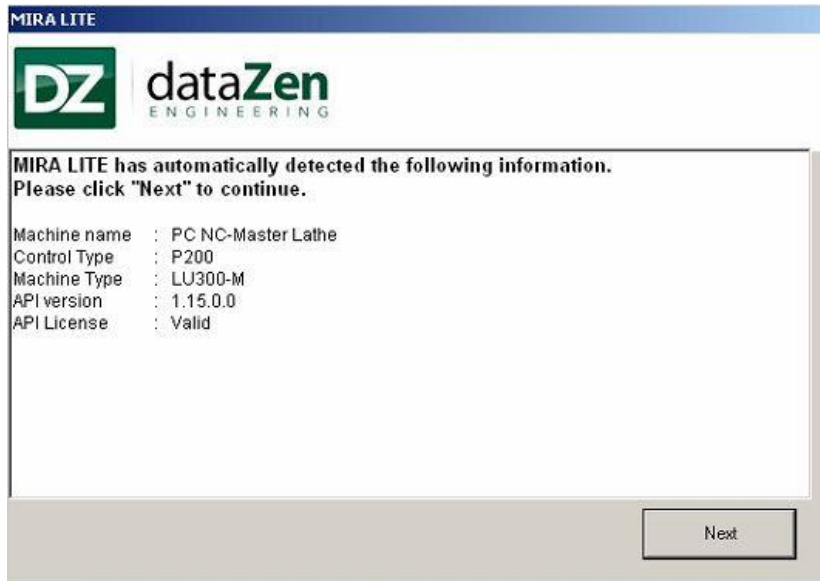


Figure 44: MIRA LITE Installation- Machine details



Figure 45: MIRA LITE Installation- In progress

10. MIRA LITE Service gets added to the THINC Startup Service monitor.

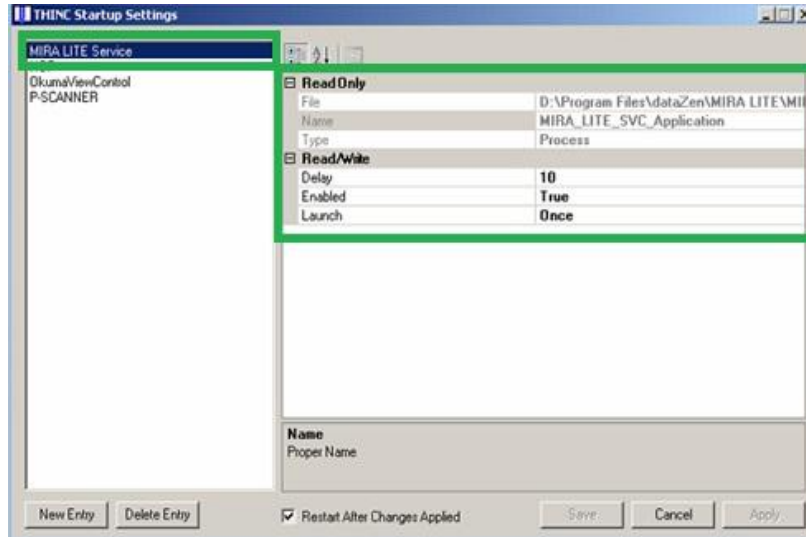


Figure 46: THINC Startup Setting

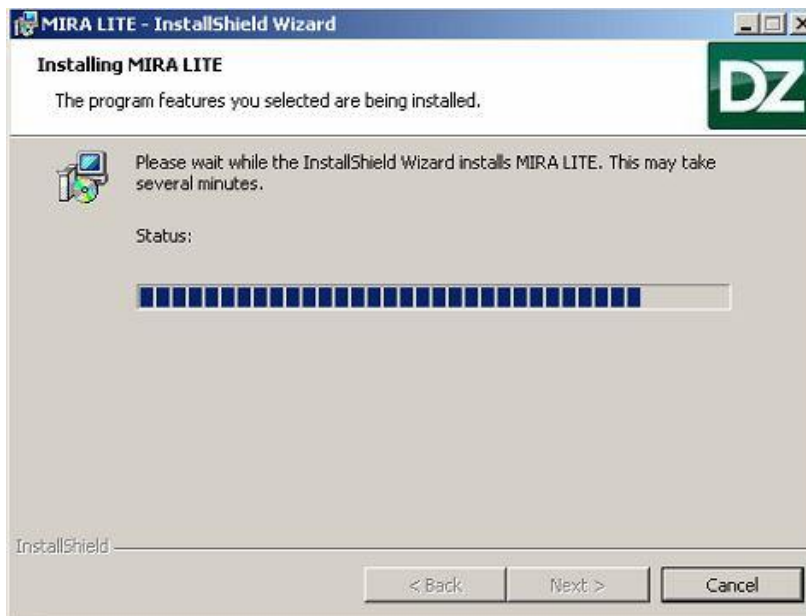


Figure 47: MIRA LITE Installation process



11. Click on 'Finish' to complete the installation.



Figure 48: Installation Complete

Note: If the Upgrade Process is interrupted, click on Finish and start a fresh installation of MIRA LITE.

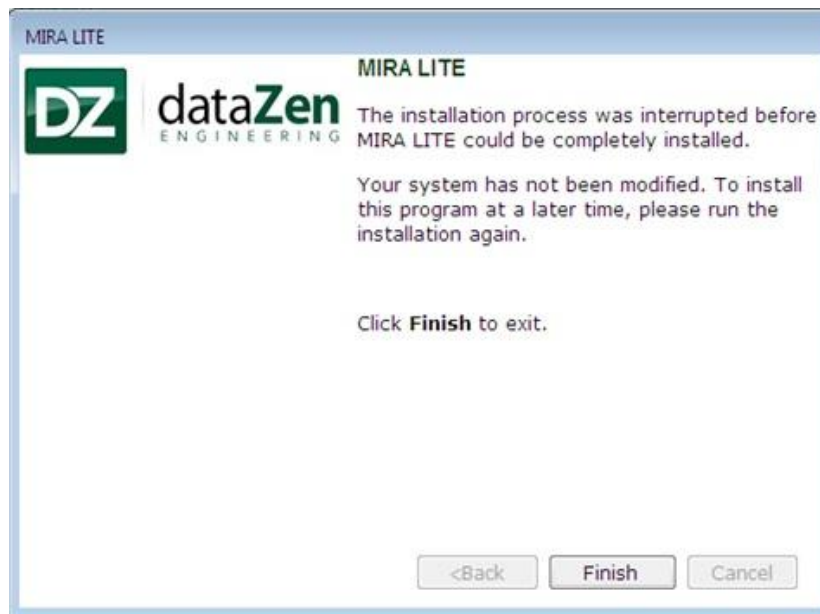


Figure 49: MIRA LITE Upgrade interrupts-Finish

3.4 Uninstallation Process

3.4.1 MIRA LITE Uninstallation

1. Go to Start → Control Panel and double click on “Add or Remove Programs”

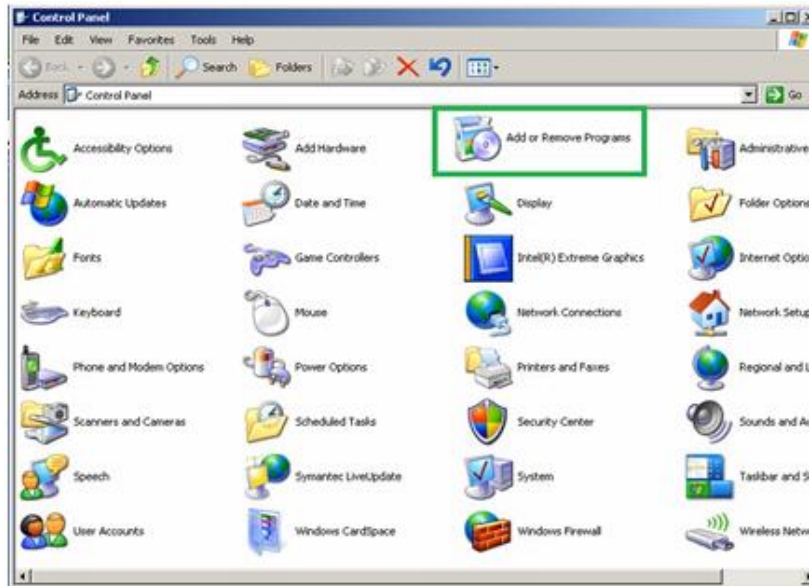


Figure 50: Uninstall MIRA LITE-1

2. Select “MIRA LITE” from the list and click on “Remove”.
3. MIRA LITE should uninstall normally.

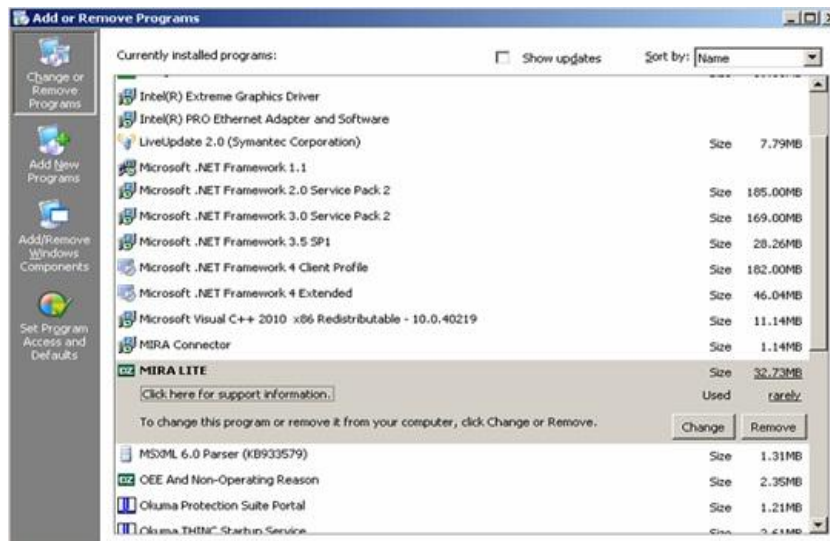


Figure 51: Uninstall MIRA LITE-2

4. If the program is not working properly, click on ‘Repair’ to re-install otherwise click on ‘Close’ and continue with uninstallation of MIRA LITE.

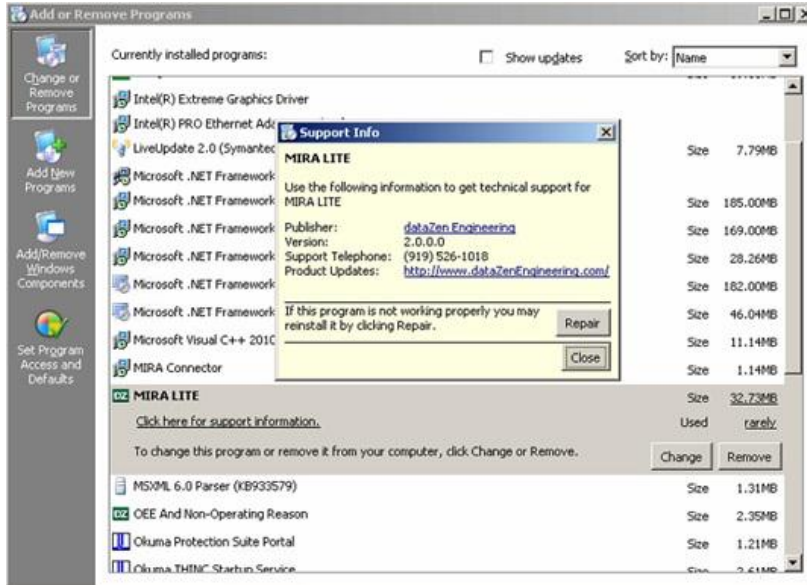


Figure 52: Uninstallation - Support Info

5. Click on **YES** to un-install MIRA LITE completely.

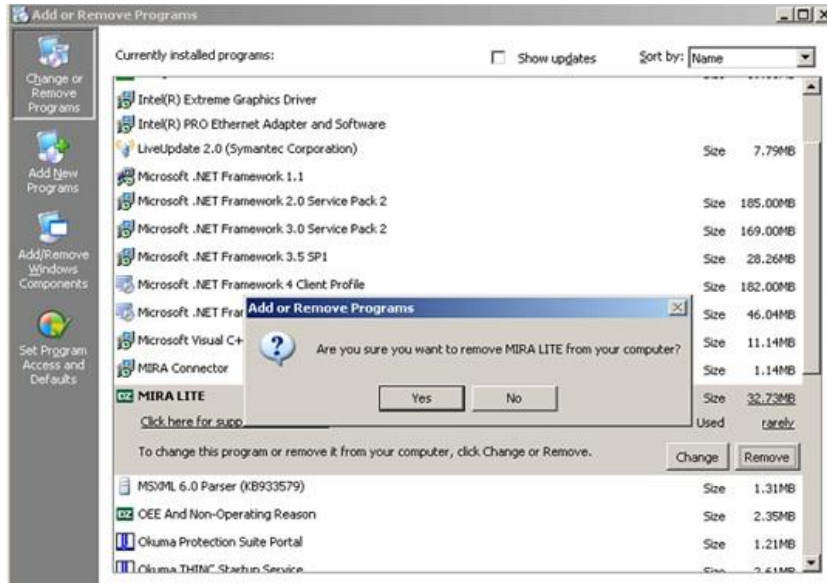


Figure 53: MIRA LITE Uninstallation Confirmation

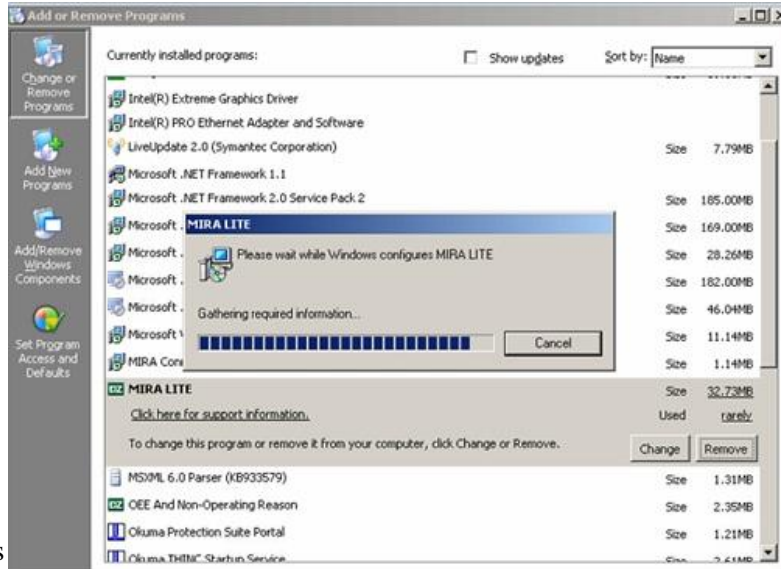


Figure 54: Uninstallation Complete

- Note:**
1. MIRA LITE service will be removed from THINC Startup service automatically.
 2. MIRA LITE Prerequisites will not be uninstalled if MIRA LITE is uninstalled from the machine, Please uninstall prerequisites manually.

Follow the steps below to uninstall the prerequisites:

3.4.2 Microsoft Visual C++ 2010 Uninstallation

1. Go to Start→Control Panel and double click on “Add or Remove Programs”
2. Select “Microsoft Visual C++ 2010 Redistributable Package” and click on “Remove” Button as shown in the figure below.
3. Microsoft Visual C++ 2010 Redistributable Package should uninstall normally.

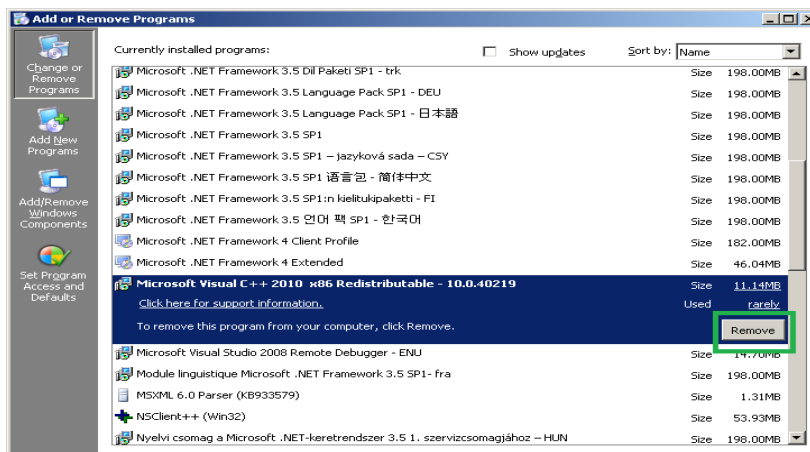


Figure 55: Microsoft Visual C++ 2010 Uninstallation

3.4.3 SQLite Uninstallation

1. Go to Start→Control Panel and double click on “Add or Remove Programs”
2. Select “System.Data.SQLite v1.0.94.0” and click on “Remove” Button as shown in the figure below.

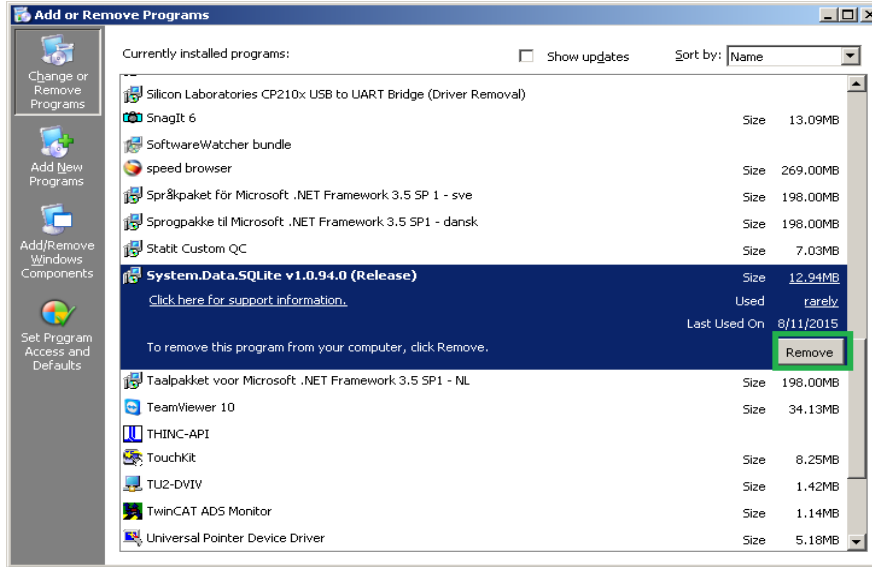


Figure 56: SQLite Uninstallation-1

3. SQLite should uninstall gradually.

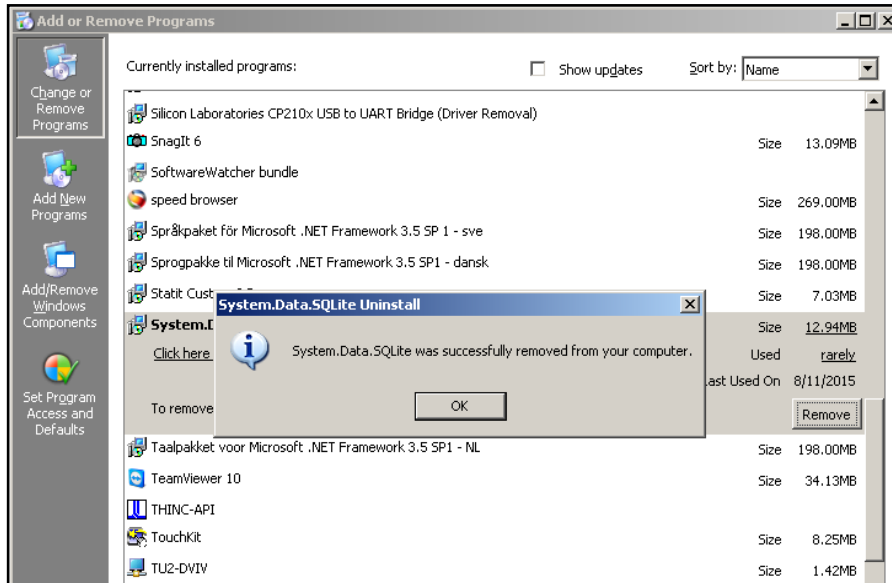


Figure 57: SQLite Uninstallation-2

4 Using MIRA LITE

This section describes the user interface plus actions and functions for reference by the user.

4.1 Machine Status

The operator can see machine current status in different color codes

1. Machine current status will be shown on the machine image background and “CURRENT UTILIZATION” box background as shown in the figure below.

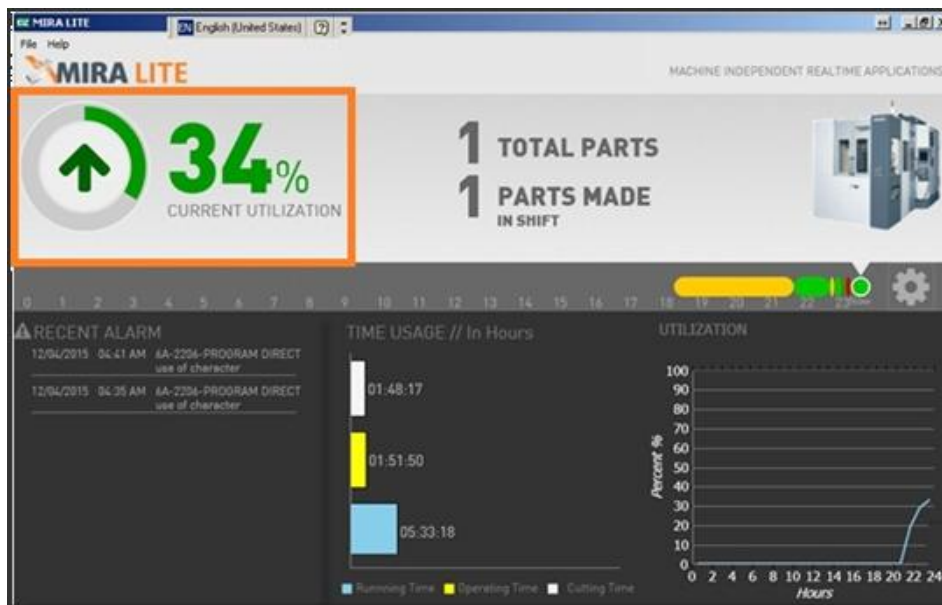


Figure 58: Machine Status

Color codes:

Green: Running



Yellow: Program Stopped



Red: Alarm



- The user will be able to see the time if the machine is in Operating, Alarm or Program Stop mode.
- Position the cursor over the color strip to check the time the machine is in Operating, Alarm, or Program Stop mode, as shown in the figure below.



Figure 59: Machine Status Time

- For B-Level Alarms MIRA LITE will show the alarm state, however the program may be running on the machine. E.g. “2206 ALARM-B Battery out of life” as shown in the below figure
- Even if the machine state shows alarm, but still it will update the utilization and parts produced details on the window.

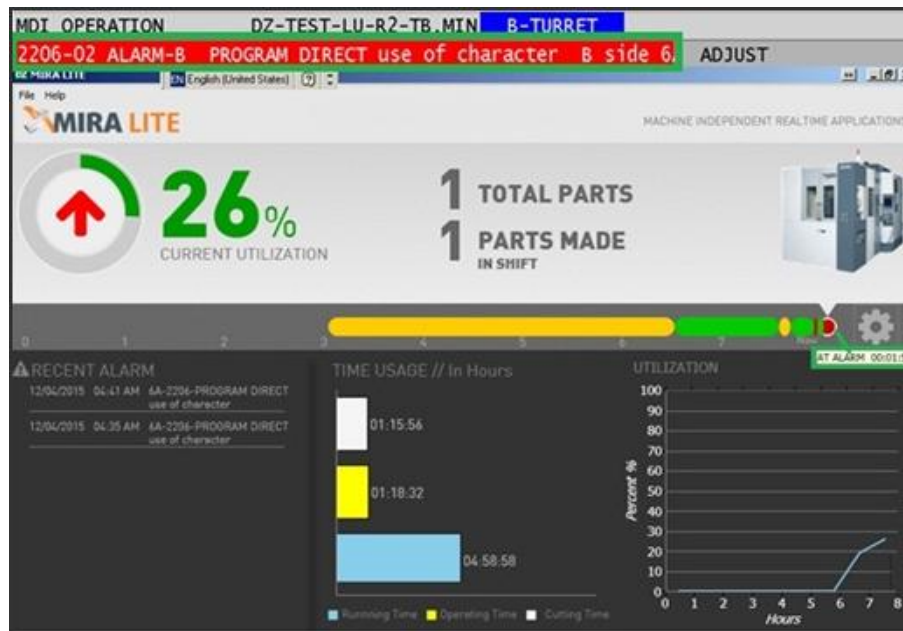


Figure 60: B-Level Alarms

4.2 MIRA LITE Service

MIRA LITE Application runs the background windows startup service which collects the data from the machine and display it on the application window.

MIRA LITE Services gets added to the THINC Startup Settings after the successful installation of MIRA LITE.

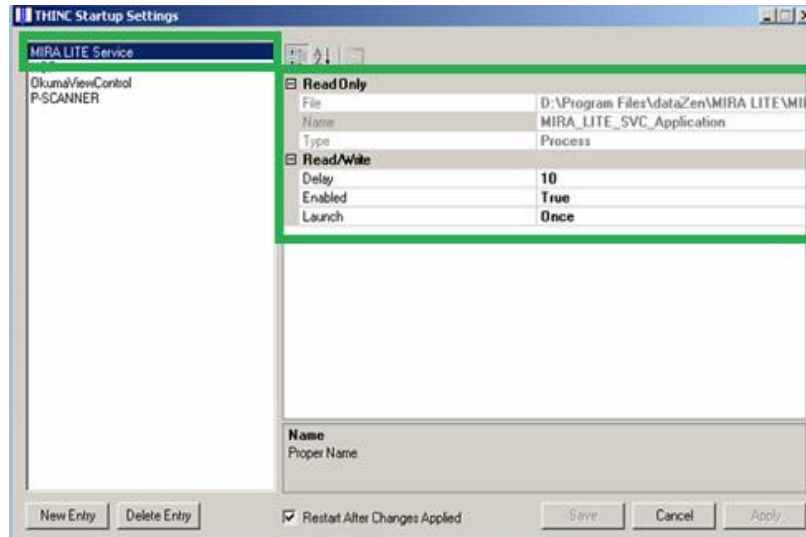


Figure 61: MIRA LITE Service in THINC Startup Settings

Service Status:

MIRA LITE service status can be checked on the THINC Startup Setting window.

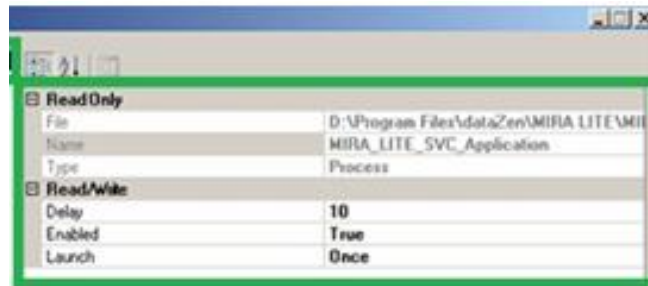


Figure 62: MIRA LITE Service Status

1. If the MIRA LITE Service status **“Enabled = True”**, MIRA LITE Services are started and the data are collected.
2. If the MIRA LITE Service status **“Enabled = False”**, MIRA LITE Services are stopped and the data are not collected.

4.3 Operation Time

1. Machine operation time will be shown on the left panel of the application in graphical format as shown in the figure below.
2. The graph will show total running time, operating time and the cutting time for selected duration.
3. By default, the duration is set to 24hrs. To change the duration to 8, 12, or 16 hours, respectively, click on “**Setting**” icon and select the appropriate option.
4. To check the current Operation, Non-Operation and Alarm time, position the mouse cursor over the application status bar (color codes) on the top of the application.
5. Operation time chart and total parts will be refreshed per selected duration.

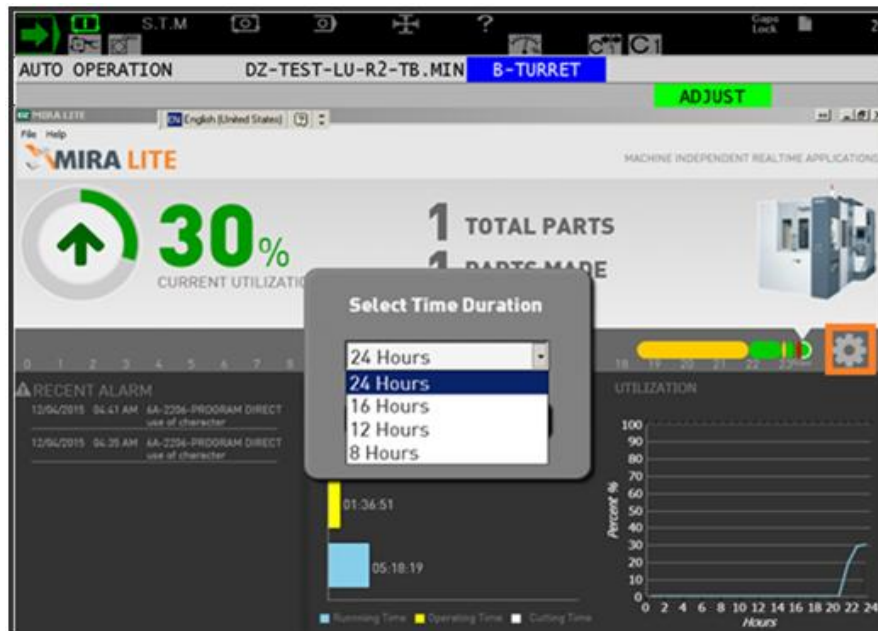


Figure 63: Operation Time

4.4 Produced Parts

4.4.1 Total Parts

1. Total parts produced will be shown in the center of the application window.

4.4.2 Parts made in the shift

1. This section will show the total parts produced for the selected shift duration as shown in the figure below.
2. The Operator can change the duration by clicking on “**Setting**” button. Part counts will be refreshed per the selected duration as shown in the figure below.
 - a. For 24 hrs. duration.

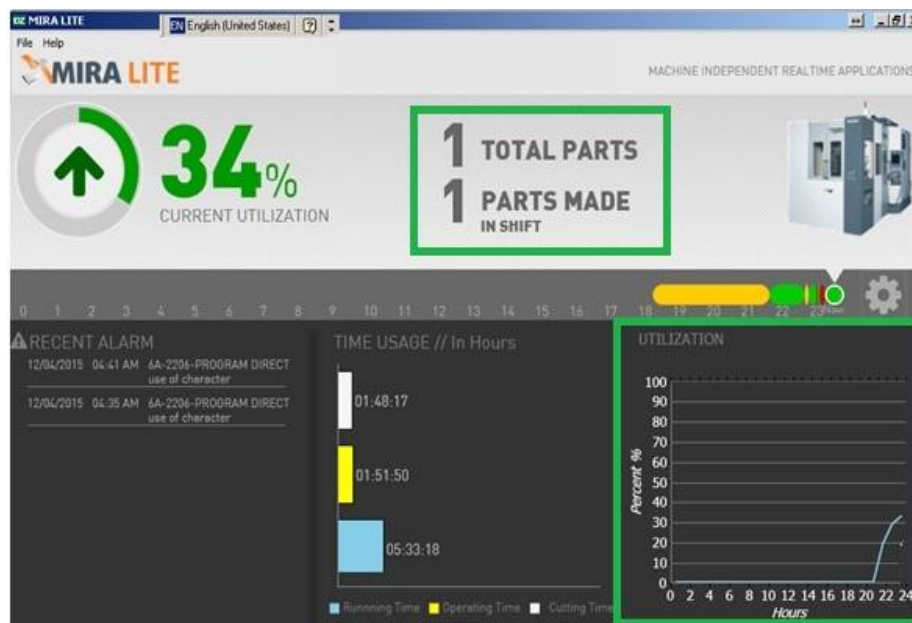


Figure 64: Total Parts Produced



- b. For 16 hours duration, part count value and other details on the MIRA LITE window are updated as per the duration selected.

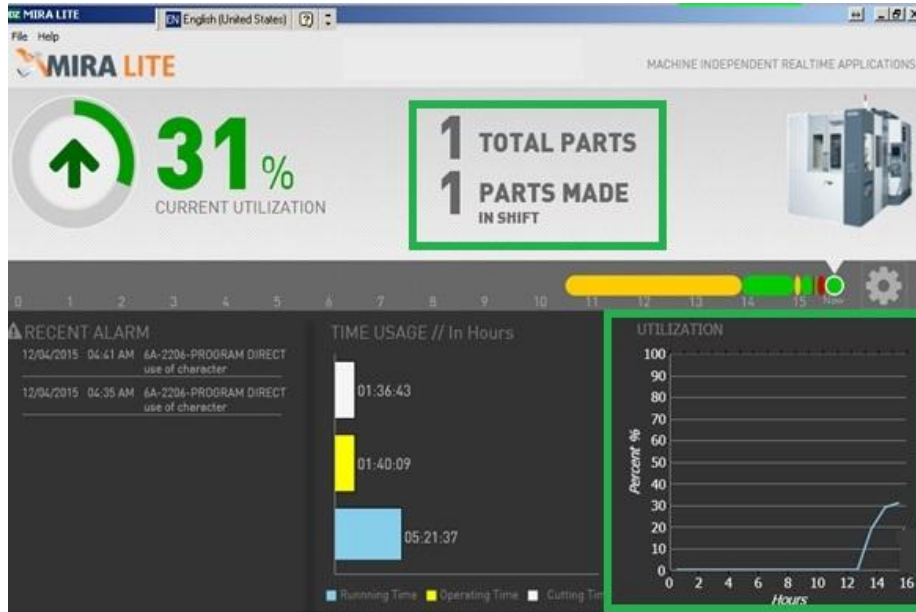


Figure 65: Select 16 hours duration

4.5 Current Utilization

1. Current machine utilization is displayed in the left corner of the application in the form of a %.
2. It will be changed as per the duration selected.
3. The machine utilization graph is displayed on the right side of the application window.

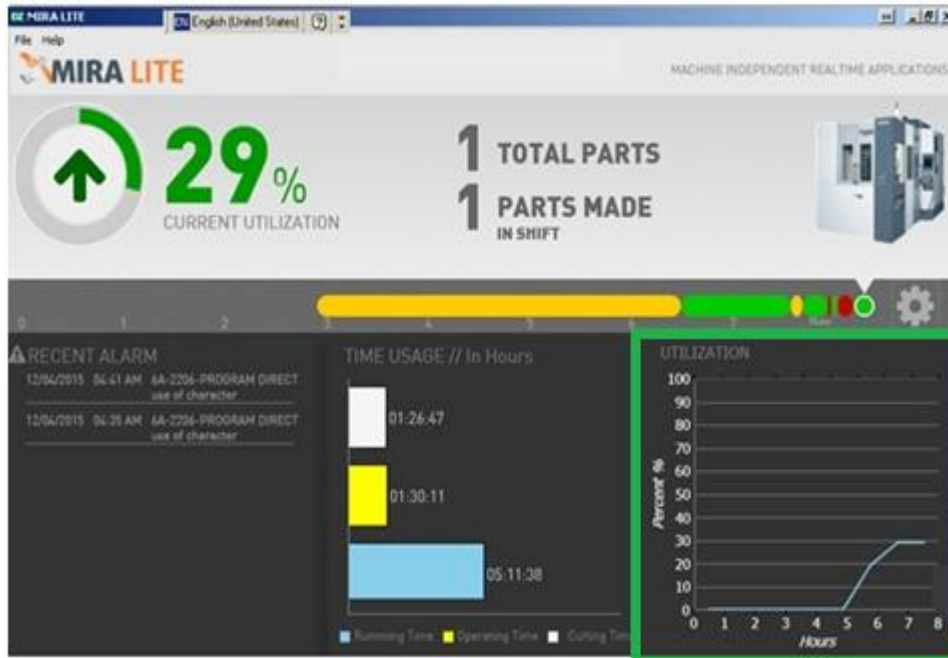


Figure 66: Current Utilization

4.6 Export to PDF/JPEG

1. To export the shown reports and graphs, click on **File**→**Export**→**PDF/JPEG**



Figure 67: Export to PDF/JPEG

2. Select the file format from the “Save as” dropdown list, e.g. JPEG or PDF.
3. By default the report file name is set to “Machine Name Month-Year-current date-current time’ user can rename the report as per convenience.
4. Select the location to save the file and click on ‘Save’.

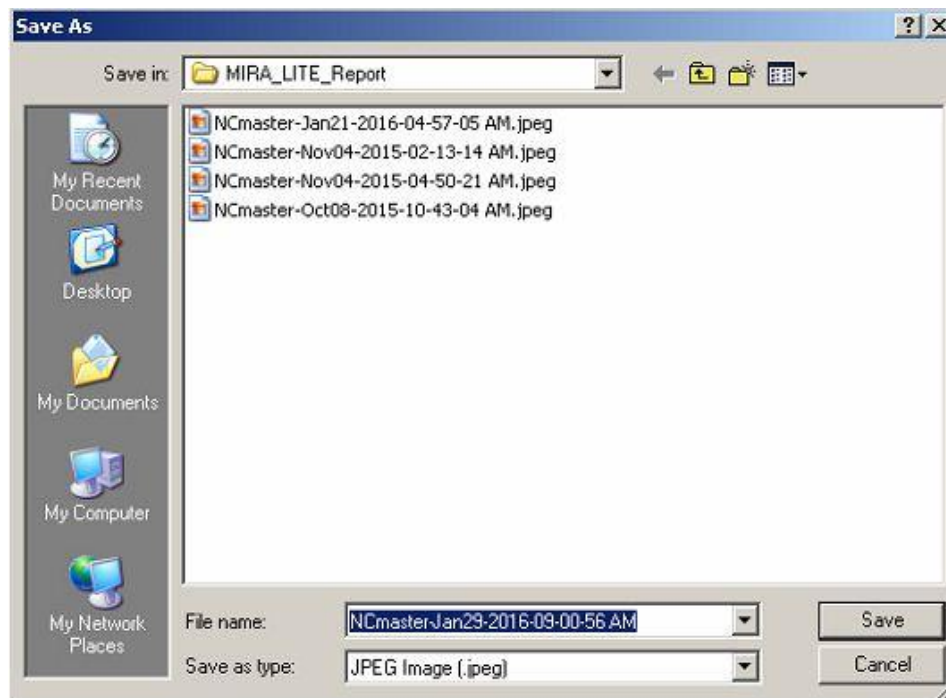


Figure 68: Save the report

Note: By default report will be stored under “D:\dataZen\MIRA_LITE_Report” folder; User can change the location as per convenience.

5 Help

5.1 License

5.1.1 Get License

1. To get the license for MIRA LITE, click on “Help” in menu bar and then click on “License”



Figure 69: Get License

2. Click on “Get License” and email the ‘Hardware ID’ to dataZen at licensing@datazenengineering.com

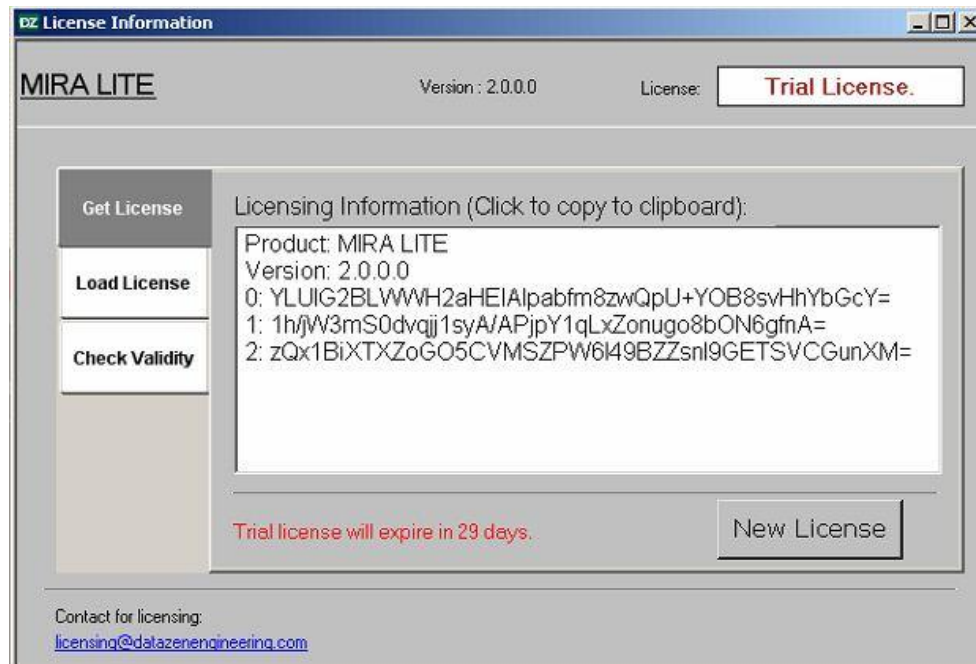


Figure 70: Send Hardware ID to dataZen

5.1.2 Load License

1. To load the license, open “License Information” window in “Help” menu and click on “Load License”.
2. To browse the license file, click on “Load License” button, select the file and click on “Open”.

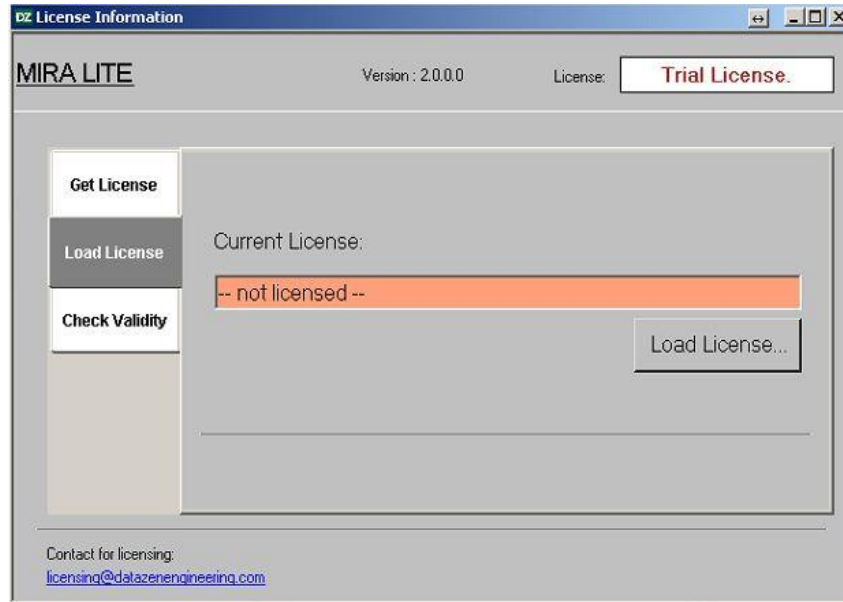


Figure 71: Load License

Note: User must restart the application to register the application.

5.1.3 Check Validity

1. To check the license validity click on “Check Validity”.

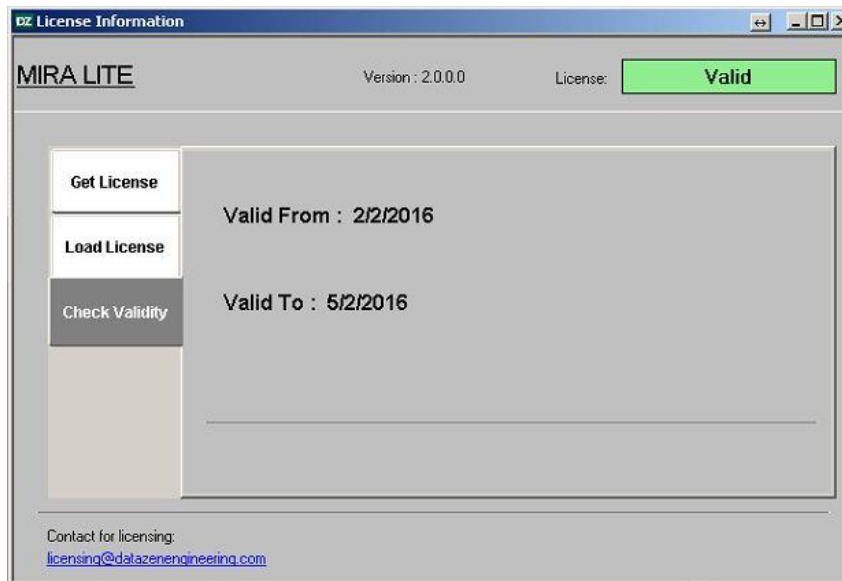


Figure 72: Check License Validity



5.1.4 About

1. To check the MIRA LITE application version, click on “Help” and then click on “About”.



Figure 73: Check Application version

2. ‘About’ window will display the application version and application information.

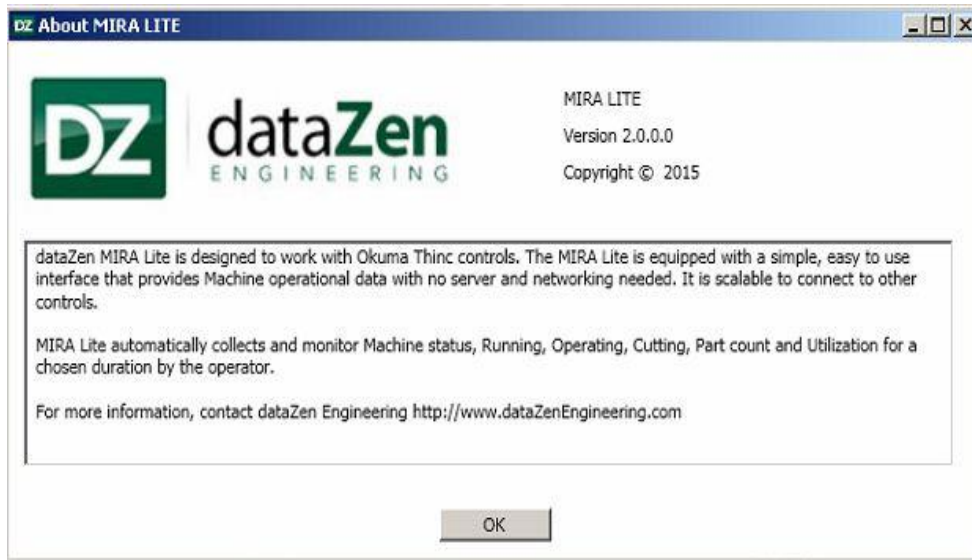


Figure 74: Check Application Version

6 Frequently Asked Questions

1. What is MIRA LITE?

Answer: MIRA LITE is built on a scalable technology from dataZen Engineering, it automatically collects and monitors Machine Operational Status, Alarms, Utilization, Parts Produced and Availability from the control at the machine level. MIRA LITE doesn't require a server or network connection and runs directly to the P-control.

2. What CNC controls will MIRA LITE work on?

Answer: Currently MIRA LITE will work on Okuma P100 II, P200 and P300 controls.

Technical Specifications are:

- THINC API (Lathe or Machining Center) Version 1.15.0.0 and above.
- .NET Framework 4.0
- OSP Controls (P-100 II / P-200 / P-300)
- Scalable to connect other controls

3. Will MIRA LITE work on other controls?

Answer: Current version, 2.0 is intended to work with Okuma CNC controls only. However, it is designed to work with other CNC controls such as Mazak, DMG Mori Seiki etc. in subsequent versions. MIRA LITE comes with a plug-in manager that will allow other CNC controls to be supportive.

4. Does MIRA LITE require a dedicated server or CNC controls to be networked?

Answer: MIRA LITE is designed specifically to work on the CNC controls with operator efficiency in mind. However, a version called MIRA PLUS is in the works that will support CNC controls that are networked to a dedicated or virtual server.

5. Where can I find or download MIRA LITE?

Answer: MIRA LITE can be downloaded from

<http://www.datazenengineering.com/products/product-offerings/mira/mira-lite/>

Here you can find the MIRA LITE installer, datasheet and user manuals, etc.

6. Do I need to purchase an additional Machine option for Okuma CNC controls for MIRA LITE to work?

Answer: The only software that is needed for MIRA LITE to work in this version 2.0 is the Okuma THINC API (Lathe or Machining Center) Version 1.15.0.0 and above. Please see the Technical Specifications for more details. Subsequent versions will include MTConnect or CNC control specific API support.

7. Do I need to configure anything after MIRA LITE is installed on the CNC control?

Answer: No, MIRA LITE is designed to work as soon as it is installed with no additional configuration needed. However, to add any data points beyond what is seen on the application screen will require customization. Please contact sales@dataZenEngineering.com with a request and a quote will be provided based on the specific requirement.

8. What to do if there is an error on the control screen and whom to contact?

Answer: MIRA LITE has gone through very rigorous Quality Assurance Process. However, it is understandable that certain events could trigger within the Windows Operating System that could potentially impact the application behavior. In the event the error is related to MIRA LITE application, please send an email to support@dataZenEngineering.com with a screen capture of the error. A ticket will be created to respond in a timely manner. A more detail analysis may be required, including obtaining the Windows event logs and the application logs.

For all other CNC control related issues, please contact your local distributor who supplied the Machine w/ CNC control.

9. What is THINC API and how to obtain it?

Answer: API stands for Application Programming Interface. For more information on THINC API, please visit <http://www.okuma.com>. Contact your local Okuma Distributor for installation and support of THINC API.

10. I see the machine operational data within the MIRA LITE application, can I export it?

Answer: Yes, MIRA LITE comes with an export feature that allows the screen with machine operational data to be exported into PDF and JPEG format. In that process MIRA LITE allows the actual CNC Control name to be displayed with date time information appended. Please follow section “[Export to PDF/JPEG](#)”

11. I see a link to download MIRA LITE. Can I download the application and pay online?

Answer: Yes. You can download MIRA LITE full version 30-days trial license from <http://www.datazenengineering.com/products/product-offerings/mira/mira-lite/>.

Once downloaded to your PC or laptop, simply copy the installer to a USB key. Then install MIRA LITE on your Okuma CNC control. You will also need to make sure to have the correct version of THINC API running. Note: See the Technical Specification for MIRA LITE.

When you are ready after the trial period you can simply send us the license key code at licensing@dataZenEngineering.com. A new license file will be generated specific to the CNC control. That's it. *Please refer the "Quick Start Guide on MIRA LITE" for more information.*

12. Where can I see application logs and the log file location?

Answer: MIRA LITE maintains the application logs in "MIRA LITELog.txt" file. The log file will be stored in the application directory "D:\Program Files\dataZen\MIRA LITE"

13. I cannot launch the application. It is showing "Application has generated an exception that could not be handled" error message?

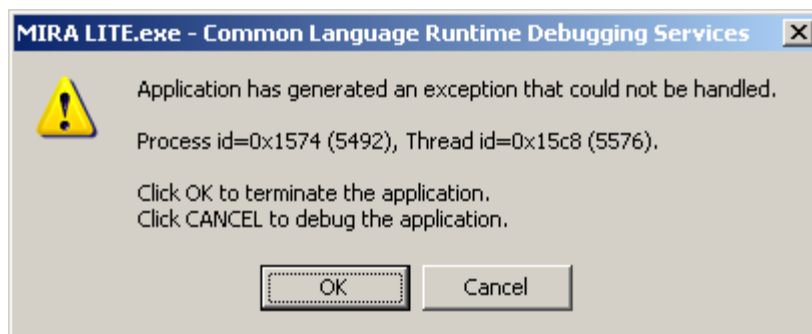


Figure 75: .Net Framework error resolution

Answer: Application shows above error message when one of the prerequisites .NET Framework 4.0 is uninstalled or corrupt. Please follow the steps to get this issue resolved.

1. Click on **OK** button on error message screen.
2. Open the MIRA installation folder and click on **SETUP.EXE**

Note: Open the installer folder downloaded from dataZen website or provided by dataZen.

3. The installation wizard will search for the corrupt or uninstalled prerequisites and install it in the background.
4. Click on “Install” button to install .NET framework 4.0 and please wait till the installer will finish the installation.

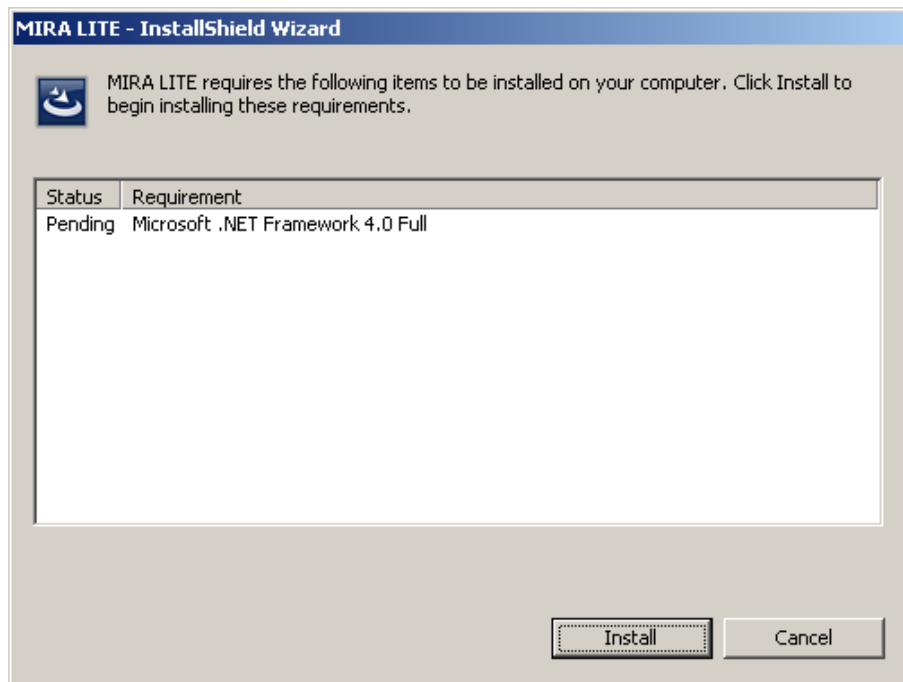


Figure 76: Installation of .NET Framework

5. Once the .NET Framework 4.0 installed successfully installer will continue with the MIRA LITE Installation. As MIRA LITE is already installed on the computer click on “Cancel” button and then click on Finish.

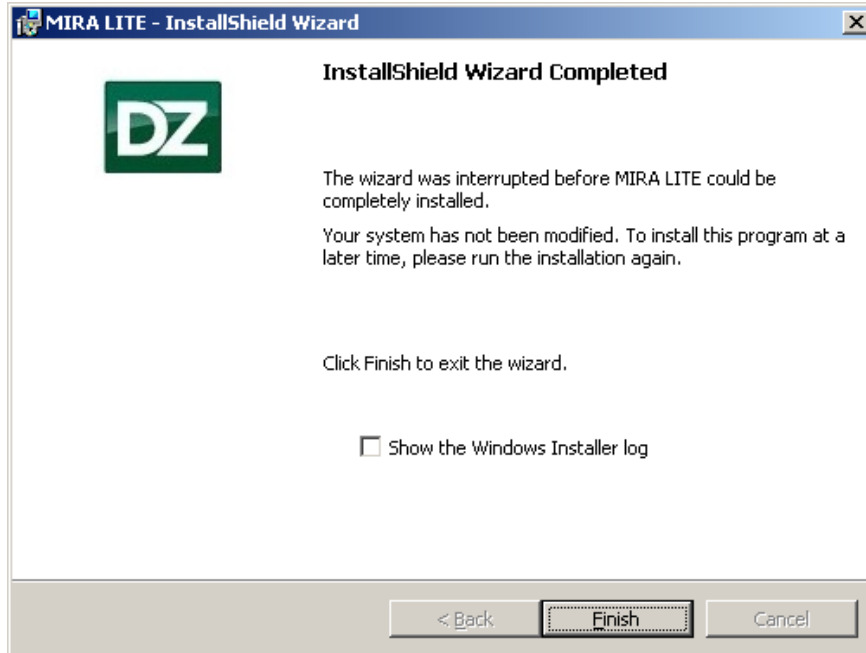


Figure 77: MIRA LITE Installation

After installation of .NET Framework 4.0 MIRA LITE application will work properly without any errors.

If the issue still persists or if you need any other assistance, please contact dataZen Support team at support@dataZenEngineering.com .

7 Terms and Conditions

It is important that you carefully read the following terms and conditions before using MIRA LITE. These terms form, a license agreement ("LICENSE") between dataZen Engineering and Organization for the use of this software, as well as any future fixes, updates, upgrades, or extensions provided to the organization (collectively, the "Software").

YOU AGREE THAT THIS AGREEMENT IS ENFORCEABLE LIKE ANY WRITTEN NEGOTIATED AGREEMENT SIGNED BY YOU. THIS AGREEMENT IS ENFORCEABLE AGAINST YOU AND ANY PERSON OR LEGAL ENTITY THAT OBTAINED THE SOFTWARE AND ON WHOSE BEHALF IT IS USED. IF YOU DO NOT AGREE, DO NOT USE THIS SOFTWARE.

In order to use the Software, you must first read and accept the terms of this license.

Things to Know

1. This Software provides access to data gathered from an Okuma OSPTHINC controller. Access to this data requires the THINC Application Programming Interface (API) to be installed on the THINC controller. Remote access requires the Event-Based THINC API.
2. You may install this Software on one (1) server. A license key must be entered prior to using the Software beyond the trial period, using a mechanism provided at install, or a configuration utility provided post-installation. Contact dataZen to obtain a license key for use of this Software.
3. Because the mechanism for data gathering is the THINC API, use of this Software is subject to the same disclaimers, warnings, and limitations of liability agreed upon for use of the THINC API. Contact Okuma America Corporation for a current license agreement for the THINC API
4. This software communicates with the THINC API through a network TCP channel, which is non-real time. Additionally, THINC API runs atop a non-real time Windows operating system. dataZen cannot predict or guarantee the timing of data updates to or from this Software. Therefore, applications dependent upon time-critical decision making must not utilize this Software
5. CAUTION – IMPROPER USE OF THIS SOFTWARE COULD RESULT IN EQUIPMENT DAMAGE.

What may be done under this License?

1. Subject to all the terms of this license, dataZen grants you a limited, non-exclusive, personal, non-sub licensable, non-assignable license to install and use the Software.



2. Unless explicitly stated otherwise, any new features that augment or enhance the current Software, including the release of new properties, configuration files, or utilities, shall be subject to the terms of this license.

What cannot be done under this License?

You agree not to use this Software to:

1. Transmit or communicate any data that is unlawful, harmful, threatening, abusive, harassing, defamatory, vulgar, obscene, invasive of another's privacy, hateful, or racially, ethnically, or otherwise objectionable;
2. Harm minors in any way;
3. Impersonate any person or entity, or falsely state or otherwise misrepresents your affiliation with a person or entity;
4. Forge headers or otherwise manipulate identifiers in order to disguise the origin of any data transmitted to other users;
5. Transmit, access, or communicate any data that you do not have a right to transmit under any law or under contractual or fiduciary relationships (such as inside information, proprietary and confidential information learned or disclosed as part of employment relationships or under non-disclosure agreements);
6. Transmit, access, or communicate any data that infringes any patent, trademark, trade secret, copyright, or other proprietary rights of any party;
7. Transmit or communicate any data that contains software viruses or any other computer code, files, or programs designed to interrupt, destroy, or limit the functionality of any computer software, hardware, or telecommunications equipment;
8. Disrupt the normal flow of dialogue, cause a screen to "scroll" faster than other users are able to type, or otherwise act in a manner that negatively affects other users' ability to engage in real time exchanges;
9. Interfere with or disrupt the Software;
10. Intentionally or unintentionally violate any applicable local, state, national, or international law, including securities exchange and any regulations, requirements, procedures, or policies in force from time to time relating to the Software.
11. Monitor traffic or make search requests in order to accumulate information about individual users;
12. "Stalk" or otherwise harass another;
13. Modify, delete, or damage any information contained on the controller of any user;
14. Collect or store personal data or other information about other users; or
15. Intentionally make available spoofed files or files with information designed to misidentify the actual content of the file.



More Do's and Don'ts

1. This License allows you to install and use the Software on a single machine. This License does not permit you to install the Software on more than one machine at a time. You may make copies of the Software in machine-readable form for backup purposes only. The backup copy must include all copyright information contained in the original.
2. Except as expressly permitted in this License, you agree not to reverse engineer, decompile, disassemble, alter, duplicate, modify, rent, lease, loan, sublicense, make copies, create derivative works from, distribute, or provide others with the Software in whole or part, or transmit, make available, or communicate the application over a network.
3. You may not sell, transfer, or communicate the Software to any third party without our prior express written consent.
4. You may not use, test, or otherwise utilize the Software in any manner for purposes of developing or implementing any method or application that is intended to monitor or interfere with the functioning of the Software.
5. You may not, through the use of any third party software application, alter or modify the values stored by the Software in the memory, on your machine's hard drive or other storage media, or in your machine's registry, or with the exception of completely uninstalling the Software, otherwise modify, alter, or block the functioning of the Software.
6. You may not use unlicensed or unauthorized copies of the Software to obtain information about other users of the Software or for any other purpose.
7. You may not use automated means, including scripts, batch files, emulators, or any other means other than direct manual input by yourself, to control the operation of the Software.

Things that need to be done when using the Software

1. It is your responsibility to ensure that you obtain all consents, authorizations, and clearances for any data owned or controlled by third parties that you transmit, access, or communicate to others using the Software.
2. DataZen will not be liable in any way:
 - a) For any errors or omissions in any data, or for any loss or damage of any kind incurred as a result of any data transmitted or failing to be transmitted via the Software;
 - b) If you are exposed to data that is offensive, indecent, or objectionable;
 - c) For any allegations or findings of infringement of copyright or other proprietary rights as a result of your use of the Software;
 - d) For any other applications or third-party applications on the same server as the Software, or on any machine to which the Software connects;
 - e) For allowing you data access;
 - f) If the server adversely affects the control or your network, including any degradation of performance or increase in network traffic, or for any loss or damage of any kind incurred as a result of such an adverse effect.



3. It is your responsibility to ensure that you are in compliance with all relevant laws, ordinances, and regulations when using this Software. DataZen cannot be liable for any unlawful use of this Software by the user.

Copyright Infringement

1. DataZen respects copyright and other laws. DataZen requires all its users to comply with copyright and other laws. DataZen does not by the supply of this Software authorize you to infringe the copyright or other rights of third parties.
2. As a condition to use the Software, you agree that you must not use the Software to infringe the intellectual property or other rights of others, in any way. The unauthorized reproduction, distribution, modification, public display, communication to the public or public performance of copyrighted works is an infringement of copyright.
3. Users are entirely responsible for their conduct and for ensuring that it complies with all applicable copyright and data-protection laws. In the event a user fails to comply with laws regarding copyrights, other intellectual property rights, data-protection and privacy, such a user may be exposed to civil and criminal liability, including possible fines and jail time.

Applicable Law

1. This license, as well as all disputes arising out of or in connection with this license, shall be governed by the laws of the State of North Carolina, without regard to or application of choice of law rules or principles.
2. Any dispute arising out of or in connection with this license, or in future agreements resulting there from, shall be exclusively resolved before the competent court in the State of North Carolina.
3. User and DataZen agree to submit to the personal and exclusive jurisdiction of the courts located within the State of North Carolina. The failure of dataZen or any third party service providers to exercise or enforce any right or provision of this License shall not constitute a waiver of such right or provision.
4. The user agrees that regardless of any statute or law to the contrary, any claim or cause of action arising out of or related to use of the Software or this License must be filed within one (1) year after such claim or cause of action arose, or be forever barred.

Points to Consider for International Use

1. Recognizing the global nature of the Internet, you agree to comply with all local rules regarding online conduct and acceptable data. Specifically, you agree to comply with all applicable laws regarding copyright and the transmission of technical data exported from the country in which you reside.

Indemnification

1. YOU AGREE TO INDEMNIFY, HOLD HARMLESS, AND DEFEND dataZen AND ITS SUBSIDIARIES, AFFILIATES, OFFICERS, AGENTS, CO-BRANDERS, OR OTHER PARTNERS, AND EMPLOYEES, AT YOUR EXPENSE, AGAINST ANY AND ALL THIRD PARTY CLAIMS OR



DEMANDS, ACTIONS, PROCEEDINGS, AND SUITS, AND ALL RELATED LIABILITIES, DAMAGES, SETTLEMENTS, PENALTIES, FINES, COSTS, AND EXPENSES (INCLUDING, WITHOUT LIMITATION, REASONABLE ATTORNEY'S FEES AND OTHER DISPUTE RESOLUTION EXPENSES) INCURRED BY dataZen, DUE TO OR ARISING OUT OF DATA YOU SUBMIT, POST TO, TRANSMIT, OR COMMUNICATE THROUGH THE SOFTWARE, YOUR USE OR MISUSE OF THE SOFTWARE, YOUR CONNECTION TO OTHER USERS, YOUR VIOLATION OF THIS LICENSE, OR YOUR VIOLATIONS OF ANY RIGHTS OF ANOTHER.

Disclaimer of Warranties

1. THE SOFTWARE IS PROVIDED "AS IS" AND ON AN "AS AVAILABLE BASIS". THERE ARE NO CLAIMS, REPRESENTATIONS, OR WARRANTIES MADE BY dataZen, EITHER EXPRESS, IMPLIED, OR STATUTORY (TO THE EXTENT PERMITTED BY APPLICABLE LAW), WITH RESPECT TO THE SOFTWARE, INCLUDING BUT NOT LIMITED TO, WARRANTIES OF QUALITY, PERFORMANCE, TITLE, NON-INFRINGEMENT, MERCHANTABILITY, OR FITNESS FOR A PARTICULAR PURPOSE, NOR ARE THERE ANY WARRANTIES CREATED BY COURSE OF DEALING, COURSE OF PERFORMANCE, OR TRADE USAGE.
2. ANY DATA DOWNLOADED THROUGH THE USE OF THE SOFTWARE IS DONE AT YOUR OWN DISCRETION AND RISK, AND YOU WILL BE SOLELY RESPONSIBLE FOR ANY DAMAGE TO YOUR OPERATING SYSTEM, OR LOSS OF DATA THAT RESULTS FROM THE DOWNLOAD OR USE OF ANY SUCH MATERIAL.
3. NO ADVICE OR INFORMATION, WHETHER ORAL OR WRITTEN, OBTAINED BY USER FROM dataZen OR THEIR THIRD PARTY SERVICE PROVIDERS, SHALL CREATE ANY WARRANTY NOT EXPRESSLY STATED HEREIN.

Limitation of Liability

1. YOU UNDERSTAND AND AGREE THAT IN NO EVENT SHALL dataZen BE LIABLE, WHETHER IN CONTRACT, WARRANTY, TORT (INCLUDING NEGLIGENCE, WHETHER ACTIVE, PASSIVE, OR IMPUTED), PRODUCT LIABILITY, OR STRICT LIABILITY, EVEN IF dataZen HAS BEEN ADVISED OF THE POSSIBILITY OF SUCH DAMAGES OR IF SUCH DAMAGES ARE FORESEEABLE, FOR ANY DIRECT, INDIRECT, INCIDENTAL, SPECIAL, CONSEQUENTIAL, OR EXEMPLARY DAMAGES, INCLUDING BUT NOT LIMITED TO DAMAGES FOR LOSS OF PROFITS, GOODWILL, USE, DATA, OR OTHER INTANGIBLE LOSSES, RESULTING FROM:
 - a) THE USE OR THE INABILITY TO USE THE SOFTWARE;
 - b) THE COST OF PROCUREMENT OF SUBSTITUTE GOODS, DATA, INFORMATION, OR SERVICES PURCHASED OR OBTAINED, OR MESSAGES RECEIVED, OR TRANSACTIONS ENTERED INTO THROUGH OR FROM THE USE OF THE SOFTWARE;
 - c) UNAUTHORIZED ACCESS TO OR ALTERATION OF YOUR TRANSMISSIONS OR DATA;
 - d) STATEMENTS OR CONDUCT OF ANY THIRD PARTY USING THE SOFTWARE;OR
 - e) ANY OTHER MATERIAL RELATING TO THE USE OF THE SOFTWARE. IN NO EVENT SHALL data Zen's TOTAL LIABILITY TO YOU FOR ALL DAMAGES EXCEED THE AMOUNT OF FIFTY AMERICAN DOLLARS (\$50).

2. WHERE STATE OR TERRITORY LEGISLATION IMPLIES INTO THIS LICENSE ANY CONDITION OR WARRANTY, AND THOSE LAWS AVOID OR PROHIBIT CONDITIONS IN A CONTRACT EXCLUDING OR MODIFYING THEM, THEN THE TERM, CONDITION OR WARRANTY SHALL BE DEEMED TO BE INCLUDED IN THIS LICENSE, PROVIDED THAT TO THE FULL EXTENT THAT dataZen IS LIABLE TO THE USER FOR A BREACH OF ANY SUCH CONDITION OR WARRANTY, INCLUDING ANY ECONOMIC OR CONSEQUENTIAL LOSS, SHALL BE LIMITED AT THE OPTION OF DataZen TO ONE OR MORE OF THE FOLLOWING:
 - a) IF THE BREACH RELATED TO GOODS:
 - i. THE REPLACEMENT OF THE GOODS OR THE SUPPLY OF EQUIVALENT GOODS;
 - ii. THE REPAIR OF GOODS;
 - iii. THE PAYMENT OF THE COST OF REPLACING THE GOODS OR OBTAINING EQUIVALENT GOODS;
 - iv. THE PAYMENT OF HAVING THE GOODS REPAIRED; OR
 - b) IF THE BREACH RELATES TO SERVICES:



- i. THE SUPPLY OF THE SERVICE AGAIN; OR
 - ii. THE PAYMENT OF THE COST OF HAVING THE SERVICE SUPPLIED AGAIN.
3. THE LIMITATIONS SET FORTH IN PARAGRAPHS 12.2, 12.2.1, AND 12.2.2 SHALL APPLY EVEN IN THE EVENT OF A FUNDAMENTAL OR MATERIAL BREACH, OR A BREACH OF THE FUNDAMENTAL OR MATERIAL TERMS OF THIS AGREEMENT.

Termination

1. It is your responsibility to comply with the terms of this License, and to obey the laws of your jurisdiction. Your rights under this License will terminate immediately and without prior notice if: you violate any term of this license, including violating any applicable laws or rights of any third party, including the intellectual property rights of any such third party. You may be subject to legal action if you continue to use the Software in violation of this License.

Miscellaneous

1. This license constitutes the entire understanding of you and dataZen with respect to the Software and the subject matter hereof. There are no understandings, agreements, conditions, or representations, oral or written, express or implied, with reference to the subject matter hereof that are not merged herein, expressly referenced herein, or superseded hereby.
2. The failure or delay of dataZen to exercise or enforce any rights or provision of the License does not constitute a waiver of such right or provision.
3. All provisions which must survive in order to give effect to their meaning, shall survive any expiration or termination of this License, including without limitation all of your representations, warranties, and indemnification obligations.
4. Should any part of this License be held invalid by any court or tribunal, such invalidity shall not affect the validity of any remaining part, which will remain in full force and effect as if this License had been executed without that part having been held to be invalid.

Amendment

1. DataZen may modify this License at any time, and such modifications shall be effective immediately upon posting or other method of notification to the User. The User's continued access or use of the Software shall be deemed to be User's conclusive acceptance of the modified License Agreement.

8 Technical Support

For technical support, please contact dataZen by email. Inquiries will be answered as soon as possible, typically within one business day.

- **For technical support or troubleshooting:**

support@dataZenEngineering.com

- **For inquiries about custom software development:**

dataZen@dataZenEngineering.com

- **For sales related inquiries:**

sales@dataZenEngineering.com

- **Other method of contact is via US Postal Service mail at the following address:**

dataZen Engineering (Corporate Headquarters)

5 W Hargett Street, Suite 200

Raleigh, North Carolina 27601, USA.