



Sandvik Coromant Drilling & Tapping Calculator

Requirements:

Windows XP, Windows 7 or 8 *)

.NET 4.0 (will be installed if not present)

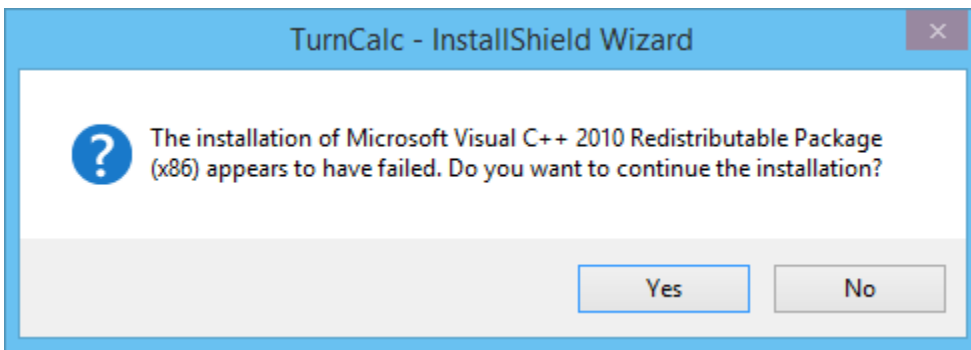
Local Administrator privileges

Install the Calculator

1. Exit any open application(s)
2. Double-click the file DrillCalcSetup.exe and follow the instructions.

Known issue(s) *

The set up of this app requires the installation of **Microsoft Visual C++ Redistributable Package (x86)**. Installing this app on Windows 7 or later, may result in the below message if the package is already installed. If so, click "Yes" and installation will continue and finalize.



Support

Send an e-mail to: app-support.coromant@sandvik.com

Using the app

The app is divided into 3 sections. The left frame contains all calculated results. Use the right/left arrow on the screen to navigate between the results.

The middle frame contains all the input columns. Click in the “Info” icon and you will find a description of the column. Use the mouse or the Tab key to navigate between the columns.

The right frame contains settings and functions of the app. You can use “Compare mode” and/or economical Calculations. In here, you will also find the “Settings” where you can switch between Inch and Metric mode.

Frontpage



Machining Calculator

Feed speed (vf) in/min 5,272	Drill diameter (DC) ⓘ	Cutting speed (vc) ⓘ	Spindle speed (n) ⓘ
	1	690	2636
	Feed per revolution (fn) ⓘ	Depth of hole ⓘ	Holes per component ⓘ
	0,002	4	5
	Specific Cutting force (kc) ⓘ		
	438902 ⓘ		

Machining Calculator - Compare mode

Feed speed (vf) in/min Current 5,272 Proposed 9,396	Drill diameter (DC) ⓘ 📄	Cutting speed (vc) ⓘ 📄	Spindle speed (n) ⓘ 📄
	1 1	690 820	2636 3132
	Feed per revolution (fn) ⓘ 📄	Depth of hole ⓘ 📄	Holes per component ⓘ 📄
	0,002 0,003	4 4	5 6 [#]
	Specific Cutting force (kc) ⓘ		
	Current: 438902 ⓘ		
	Proposed: 438902 ⓘ		