



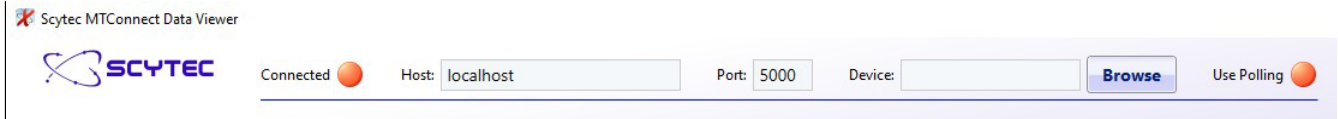
Scytec MTConnect Data Viewer

Overview of the Scytec MTConnect Data Viewer v1.0.0.0

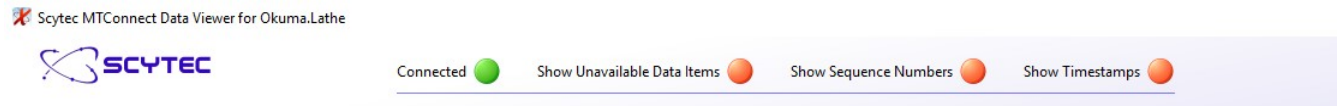
The Scytec MTConnect Data Viewer provides a user friendly method of viewing data from an MTConnect Agent.

Connection Settings

When the application first opens the connection settings will be displayed with defaults for the Host and the Port. If the MTConnect Agent is running on a PC other than where the Scytec MTConnect Data Viewer is running then the IP Address or Host Name of the MTConnect Agent should be entered along with the associated TCP port number. Pressing the Browse button will connect to the Host and Port and if the connection is successful a list of MTConnect Devices will be displayed. Select the Device Name to connect to and press Enter.

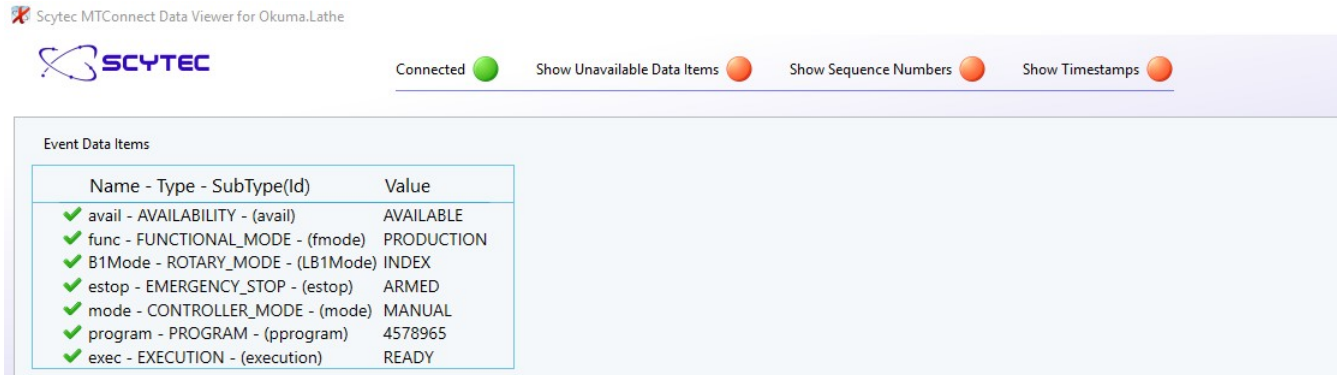


Once connected the settings will automatically hide and some filters will be displayed allowing the level of detail visible to be controlled. The settings can be displayed or hidden at any time by pressing the blue and white arrow button. The red / green buttons next to each label also serve as status indicators identifying the state of each item. For example, a green button next to Connected identifies that the Viewer is currently connected, and when pressing the green button the Viewer will disconnect and the button will be red.



Viewing Filters

By default only the columns identifying the data item and providing the value of the data items are displayed since these are the most relevant fields for most users to identify if MTConnect is providing data. However, by toggling each of the filters additional data can be displayed.





Connected

Show Unavailable Data Items

Show Sequence Numbers

Show Timestamps

Event Data Items

Name - Type - SubType(Id)	Value	Timestamp	Sequence
✓ avail - AVAILABILITY - (avail)	AVAILABLE	2016-09-07T14:12:18.6652423Z	50
✓ func - FUNCTIONAL_MODE - (fmode)	PRODUCTION	2016-09-07T14:12:18.6652423Z	54
⚠ ASSET_CHANGED - (Lathe_asset_chg)	UNAVAILABLE	2016-09-07T14:12:18.655240Z	12
⚠ ASSET_REMOVED - (Lathe_asset_rem)	UNAVAILABLE	2016-09-07T14:12:18.655240Z	13
⚠ s1ovr - ROTARY_VELOCITY_OVERRIDE - PROGRAMMED - (s1ovr)	UNAVAILABLE	2016-09-07T14:12:18.655240Z	49
⚠ S2ovr - ROTARY_VELOCITY_OVERRIDE - PROGRAMMED - (LS2ovr)	UNAVAILABLE	2016-09-07T14:12:18.655240Z	8
✓ B1Mode - ROTARY_MODE - (LB1Mode)	INDEX	2016-09-07T14:12:18.655240Z	2
✓ estop - EMERGENCY_STOP - (estop)	ARMED	2016-09-07T14:12:18.6652423Z	51
✓ mode - CONTROLLER_MODE - (mode)	MANUAL	2016-09-07T14:12:18.6652423Z	52
✓ program - PROGRAM - (pprogram)	4578965	2016-09-07T14:12:18.6652423Z	55
✓ exec - EXECUTION - (execution)	READY	2016-09-07T14:12:18.6652423Z	53
⚠ p1Fovr - PATH_FEEDRATE_OVERRIDE - PROGRAMMED - (Fovr)	UNAVAILABLE	2016-09-07T14:12:18.655240Z	1
⚠ p1Partcount - PART_COUNT - (partcount)	UNAVAILABLE	2016-09-07T14:12:18.655240Z	47
⚠ p1block - BLOCK - (Lp1block)	UNAVAILABLE	2016-09-07T14:12:18.655240Z	19
⚠ p1line - LINE - (Lp1line)	UNAVAILABLE	2016-09-07T14:12:18.655240Z	20
⚠ p1CurrentTool - TOOL_NUMBER - (Lp1CurrentTool)	UNAVAILABLE	2016-09-07T14:12:18.655240Z	14
⚠ p1ToolAssetId - TOOL_ASSET_ID - (Lp1ToolAssetId)	UNAVAILABLE	2016-09-07T14:12:18.655240Z	18
⚠ p2block - BLOCK - (p2block)	UNAVAILABLE	2016-09-07T14:12:18.655240Z	45
⚠ p2line - LINE - (p2line)	UNAVAILABLE	2016-09-07T14:12:18.655240Z	46
⚠ p2CurrentTool - TOOL_NUMBER - (p2CurrentTool)	UNAVAILABLE	2016-09-07T14:12:18.655240Z	41
⚠ p2ToolAssetId - TOOL_ASSET_ID - (p2ToolAssetId)	UNAVAILABLE	2016-09-07T14:12:18.655240Z	44



About Scytec

Scytec Consulting Inc.

Scytec was established in 2001 and is located in Greenwood Village, CO. Scytec's focus is on utilizing data in manufacturing environments as a catalyst for change and continuous improvement. Scytec is a proud active member of the MTConnect Technical Advisory Group helping to steer the direction of MTConnect as well as ensuring we are always staying involved with the latest technical developments. Scytec DataXchange, our Cloud and On-Premise machine monitoring application utilizes MTConnect as well as other protocols and input methods to implement and realize the benefits of OEE and IIoT.

Additional information about Scytec, MTConnect or DataXchange can be found at <http://www.scytec.com> or by calling us at 720-482-8250.
