

---

# P-KEYBOARD

---

User Guide

---



**dataZen**  
ENGINEERING



## Table of Contents

1	Introduction .....	4
1.1	About P-KEYBOARD .....	4
1.2	Features .....	5
1.3	Organization of the Manual .....	5
2	Installation .....	6
2.1	System Requirements .....	6
2.2	Installation Process .....	6
2.3	Launching P-KEYBOARD .....	11
2.4	Un-Installation Process.....	12
3	Using P-KEYBOARD .....	13
3.1	QWERTY Keyboard.....	13
3.2	Numeric Keypad .....	14
3.3	Quick Operational Keys .....	15
4	Help.....	18
4.1	Licensing .....	18
4.1.1	Get License .....	18
4.1.2	Load License .....	19
4.1.3	About P-KEYBOARD.....	20
5	Technical Support.....	20

## Table of Figures

Figure 1: About P-KEYBOARD.....	4
Figure 2: Installation- Click on Setup.exe .....	6
Figure 3: Installation- .NET 4.0 installations .....	7
Figure 4: Installation- Welcome screen .....	7
Figure 5: Installation- V-KEY Configuration .....	8
Figure 6: Installation- Select installation folder .....	9
Figure 7: Installation- Confirm installation .....	9
Figure 8: Installation- In progress .....	10
Figure 9: Installation complete.....	10
Figure 10: Launching P-KEYBOARD-1 .....	11
Figure 11: Launching P-KEYBOARD-2.....	11
Figure 12: Uninstall- P-KEYBOARD .....	12
Figure 13: Main Page .....	13
Figure 14: QWERTY Keyboard .....	13
Figure 15: Numeric Keyboard-1 .....	14
Figure 16: Numeric Keyboard- 2 .....	14
Figure 17: Operational Keys- Operation mode .....	15
Figure 18: Operational Keys- Program List.....	15
Figure 19: Operational Keys- Parameter window .....	16
Figure 20: Operational keys- Zero point.....	16
Figure 21: Operational Keys- Tool data window .....	17
Figure 22: Operational Keys- MacMan HMI.....	17
Figure 23: Get License .....	18
Figure 24: Get License- Copy hardware Id.....	18
Figure 25: Load License .....	19
Figure 26: Check License Validity.....	19

# 1 Introduction

dataZen P-KEYBOARD is an application which provides a visual keyboard on your display screen that can be used in place of a physical keyboard.

It is becoming new and improved innovative application to advance use of the machine with virtual keyboard rather than a conventional, separate keyboard.

## 1.1 About P-KEYBOARD

The Application includes QWERTY Keyboard, Numeric Keypad, and Panel Mode Select, which helps operator to control the process of typing and easy on screen shortcut keys to operate the machine in a very effective manner.

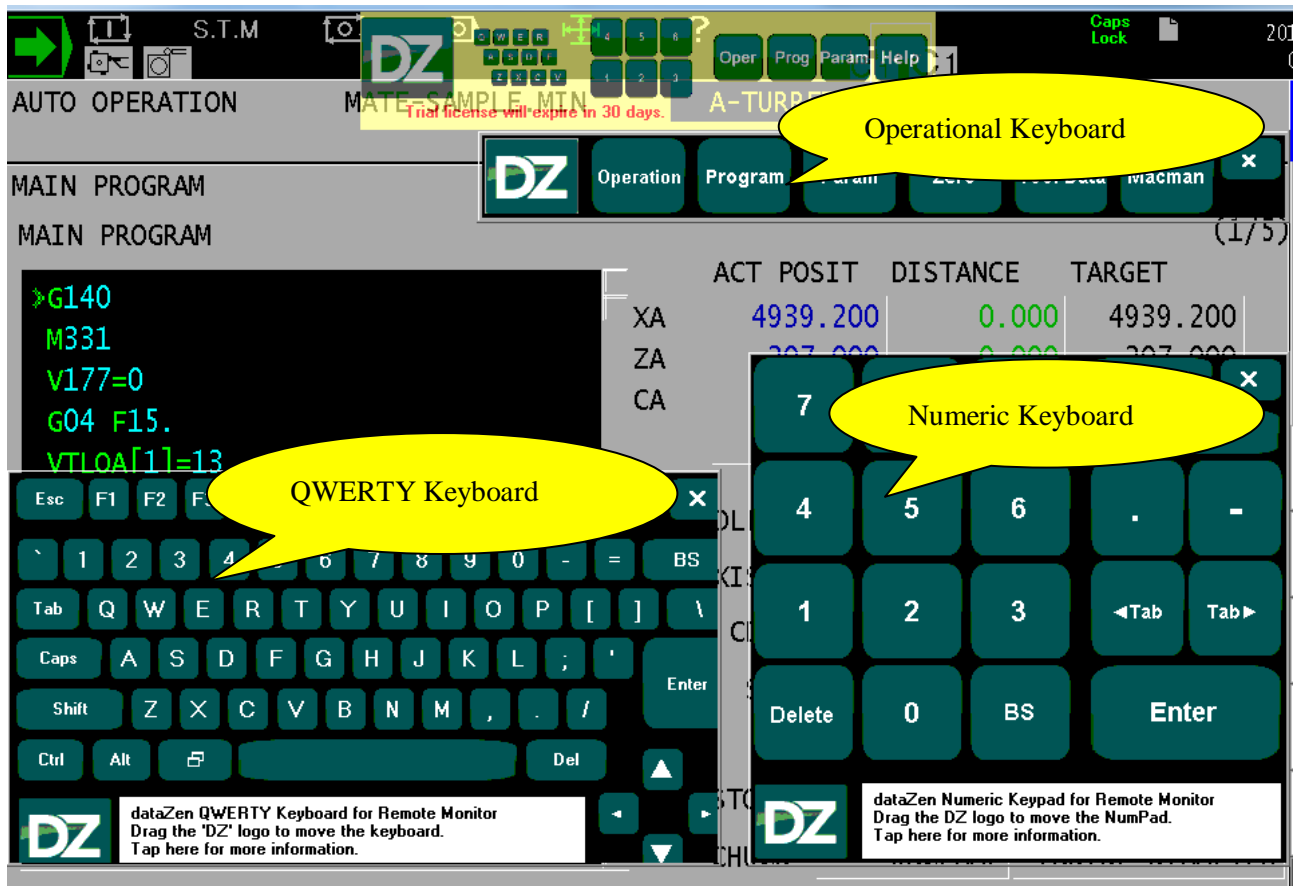


Figure 1: About P-KEYBOARD

## 1.2 Features

- Ease of use
- On screen QWERTY Keyboard and numeric keyboard
- Short keys to operate the machine functionality.

## 1.3 Organization of the Manual

### [Section 2: Installation](#)

This section covers System Requirements, Installation Process, Un-Installation Process and Troubleshooting, if applicable for each component of the application.

### [Section 3: Using P-KEYBOARD](#)

This section covers each User Interface for each feature, along with actions, if any, that can be performed by regular user of the application.

### [Section 4: Help](#)

This section covers step by step information to licensed the P-KEYBOARD Application, User manual and application about page.

### [Section 5: Technical Support](#)

## 2 Installation

The topics in this section provide step by step information of how to install P-KEYBOARD on the machine.

### 2.1 System Requirements

- THINC API v1.9.1 or greater.
- .NET Framework 4.0 SP1.
- P-Controls.(P-200/P-300)

### 2.2 Installation Process

1. Unzip the P-KEYBOARD setup.zip folder and open the installer folder
2. Double click on “Setup.exe”.

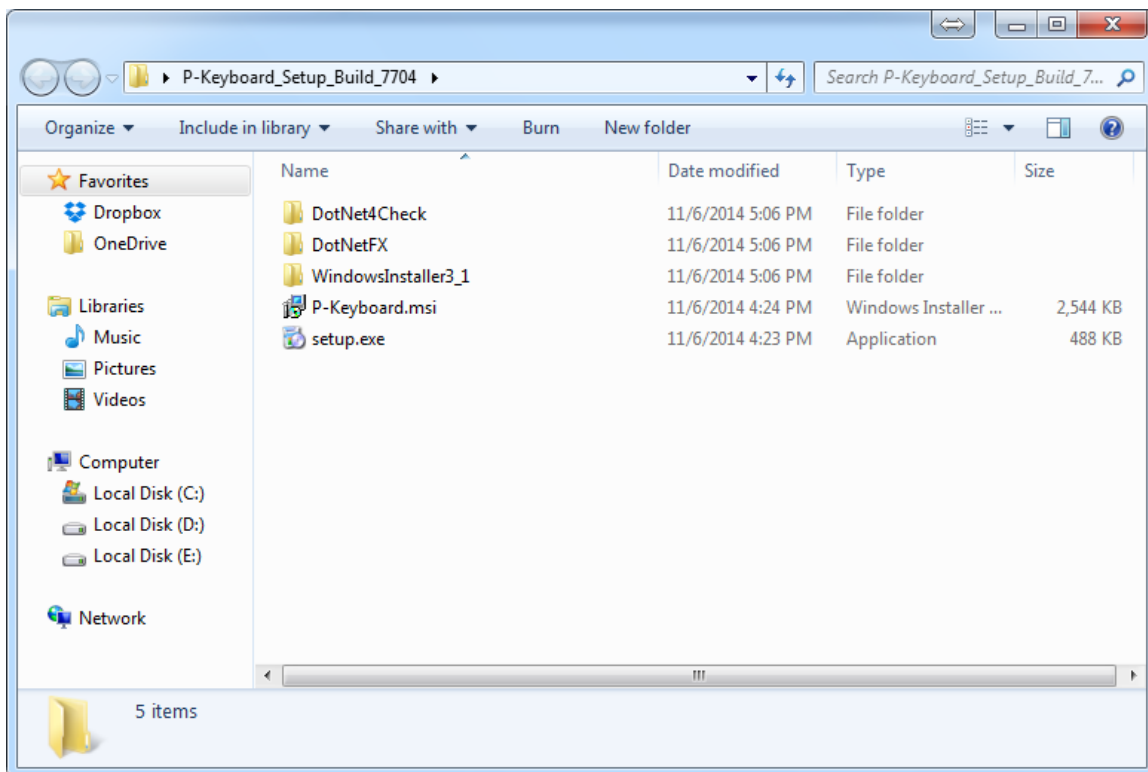


Figure 2: Installation- Click on Setup.exe

3. Once click on "Setup.exe" installer will check if .NET Framework 4.0 is installed on the machine
4. If .Net Framework is not installed on the machine then click on "Install" button to install .NET Framework.
5. Follow the installation setup wizard to install the .NET Framework.

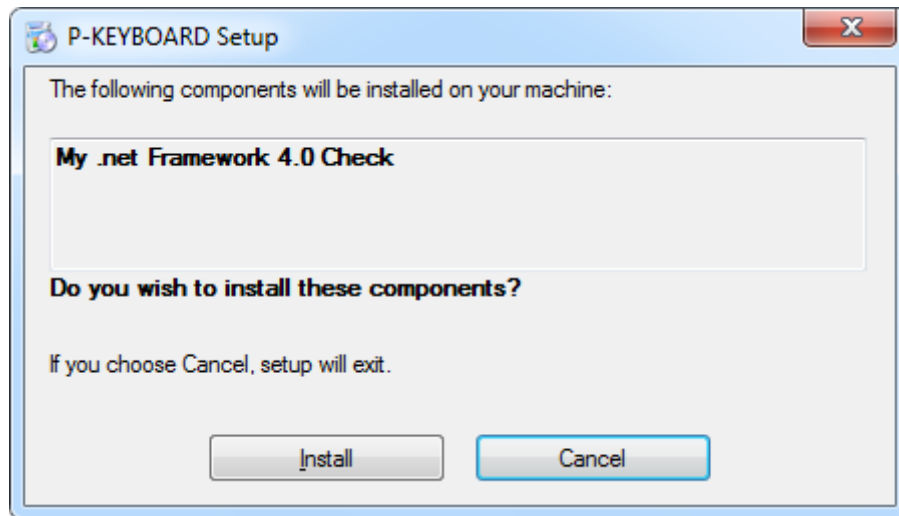


Figure 3: Installation- .NET 4.0 installations

3. Once the installation started please follow the instruction provided on installation wizard.

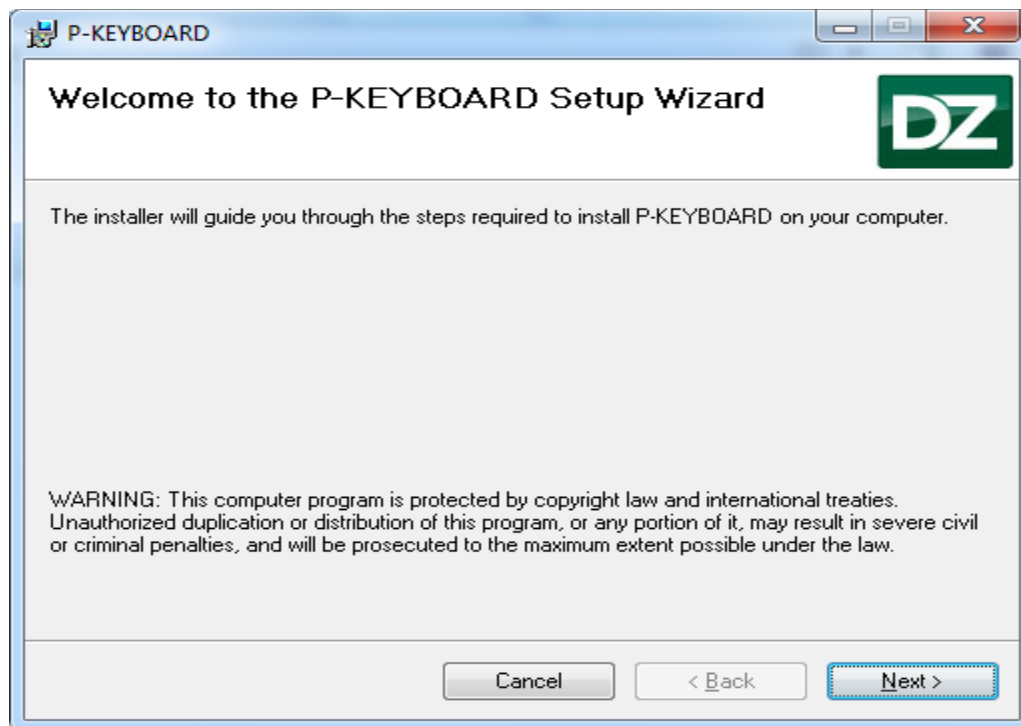
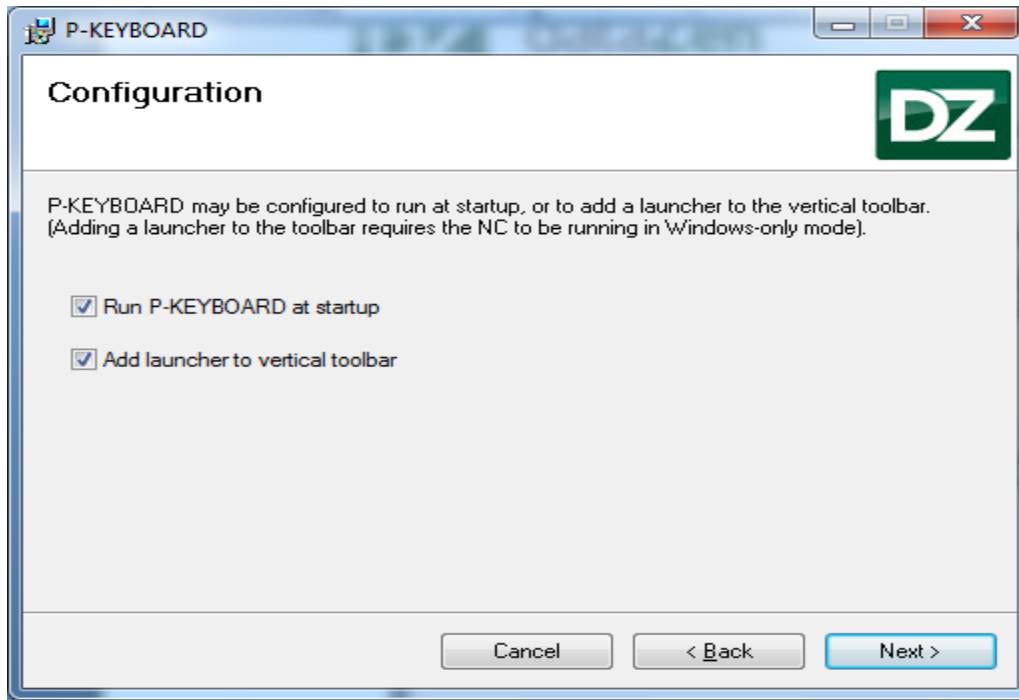


Figure 4: Installation- Welcome screen

4. To configure the application on Vertical panel of the NC-Master click on **“Add Launcher to Vertical toolbar”**
5. To add the applications on startup please click on **“Run Keyboard at startup”**.



**Figure 5: Installation- V-KEY Configuration**



- Default location for Panel Mode application installation is "D:\Program Files\dataZen\P-KEYBOARD". You may change the installation location by click on "**Browse**" button and select the desired location of installation and then click "**Next**" to continue installation

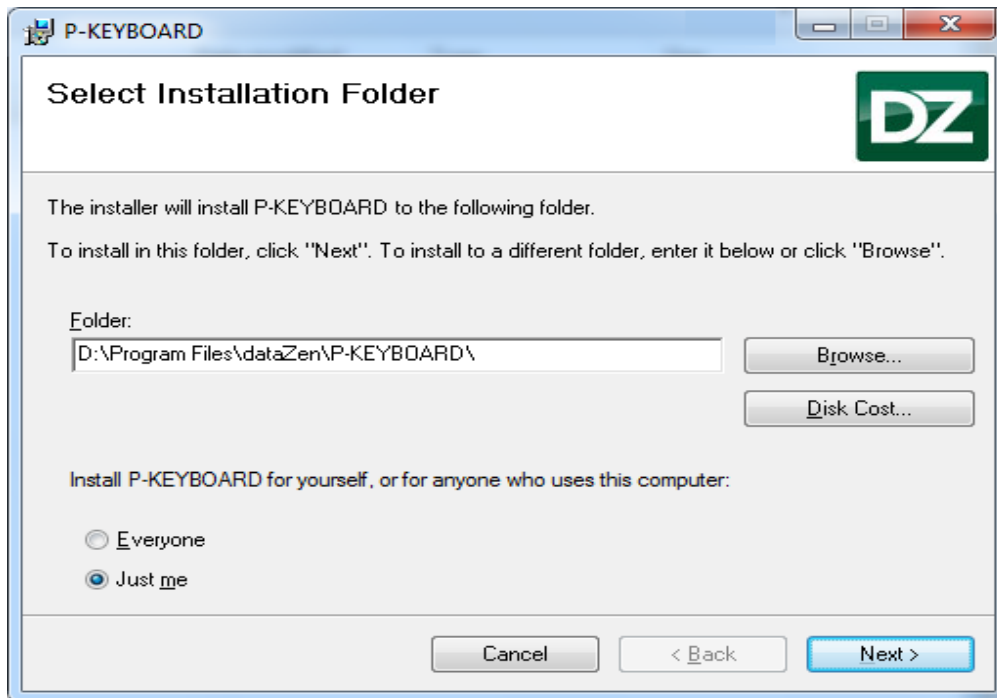


Figure 6: Installation- Select installation folder

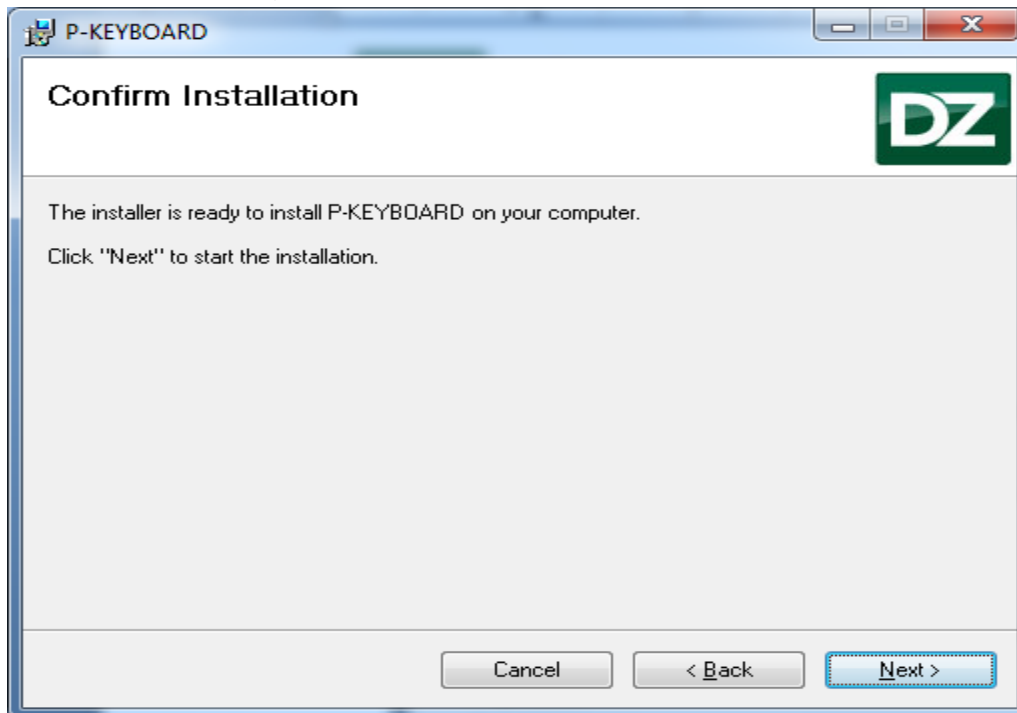


Figure 7: Installation- Confirm installation

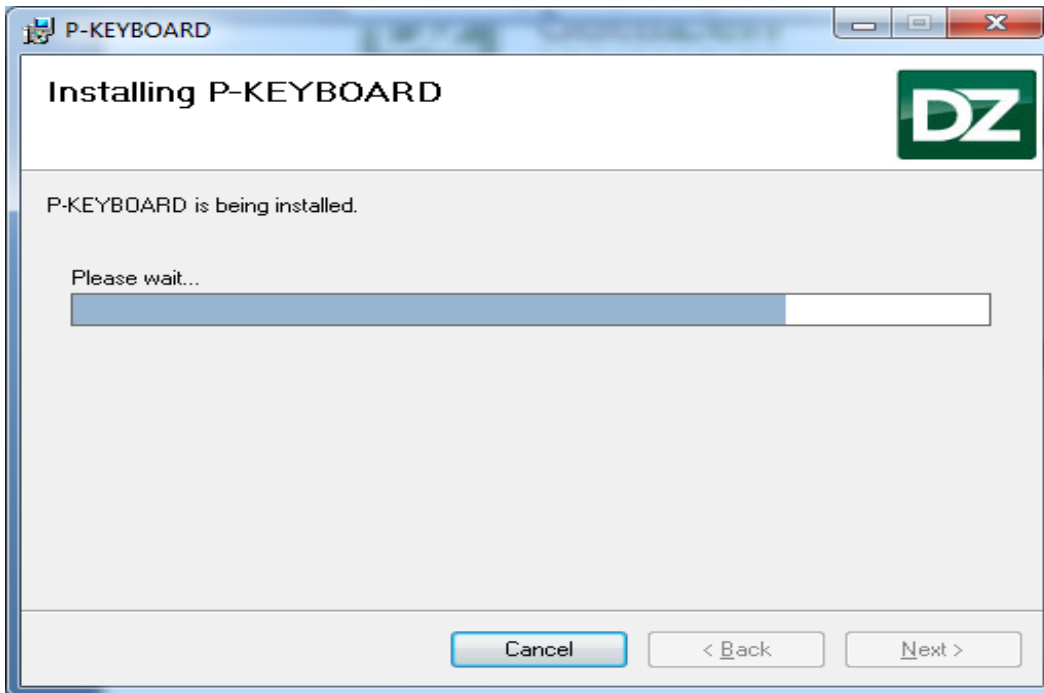


Figure 8: Installation- In progress

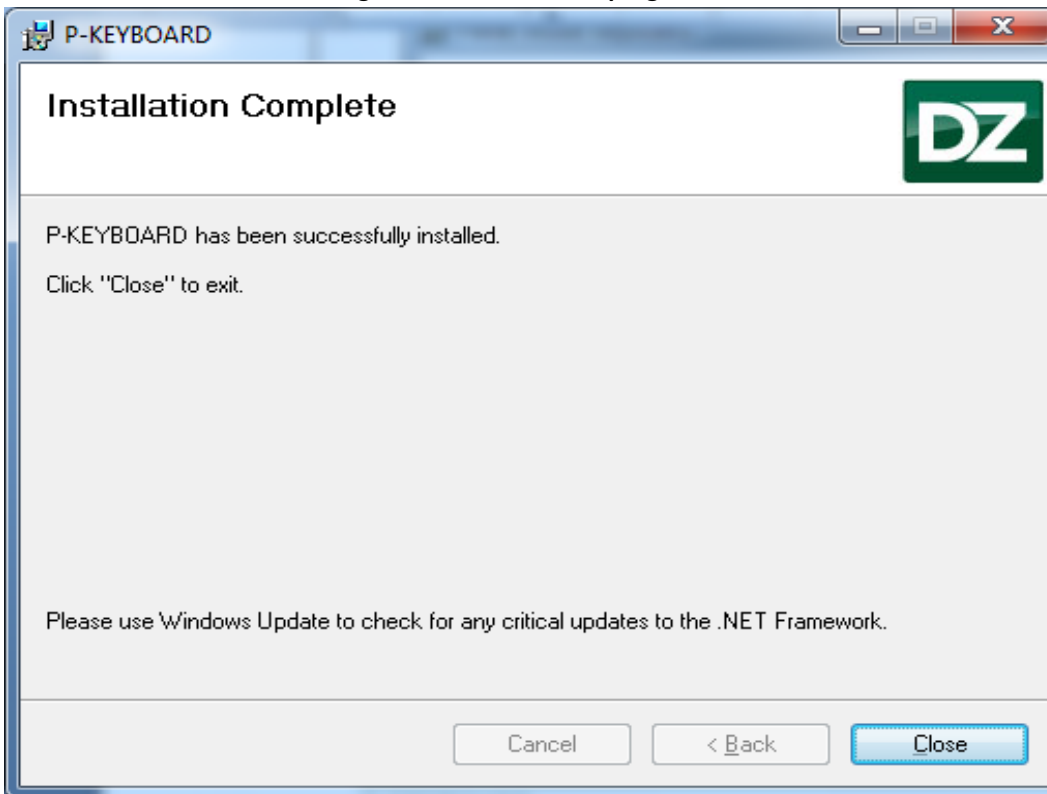
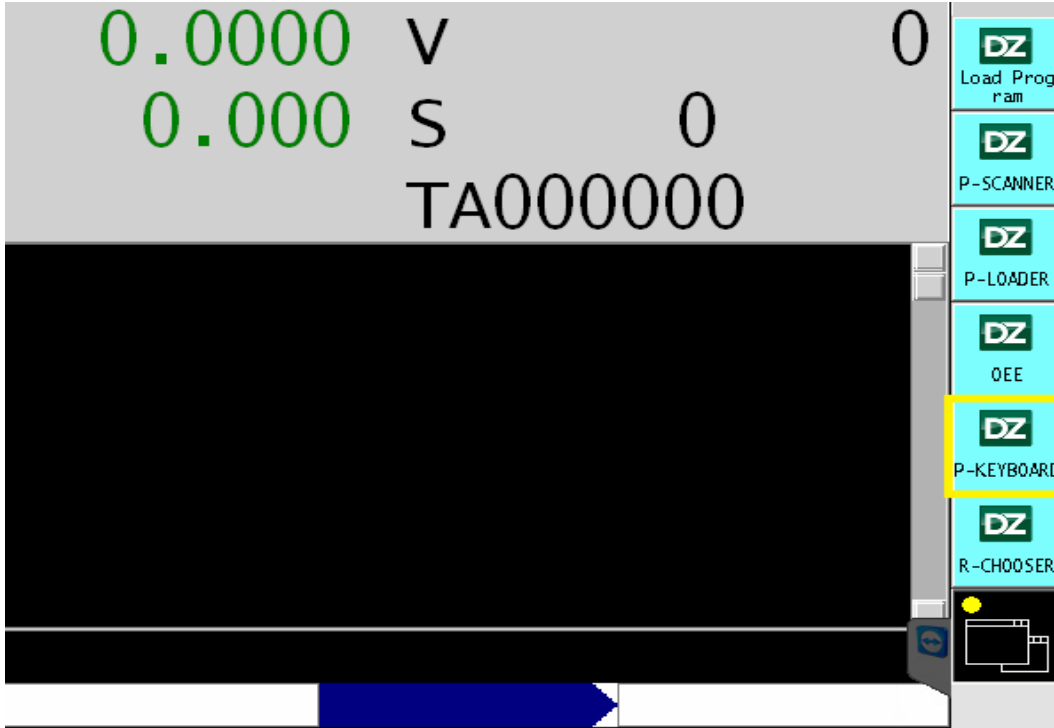


Figure 9: Installation complete

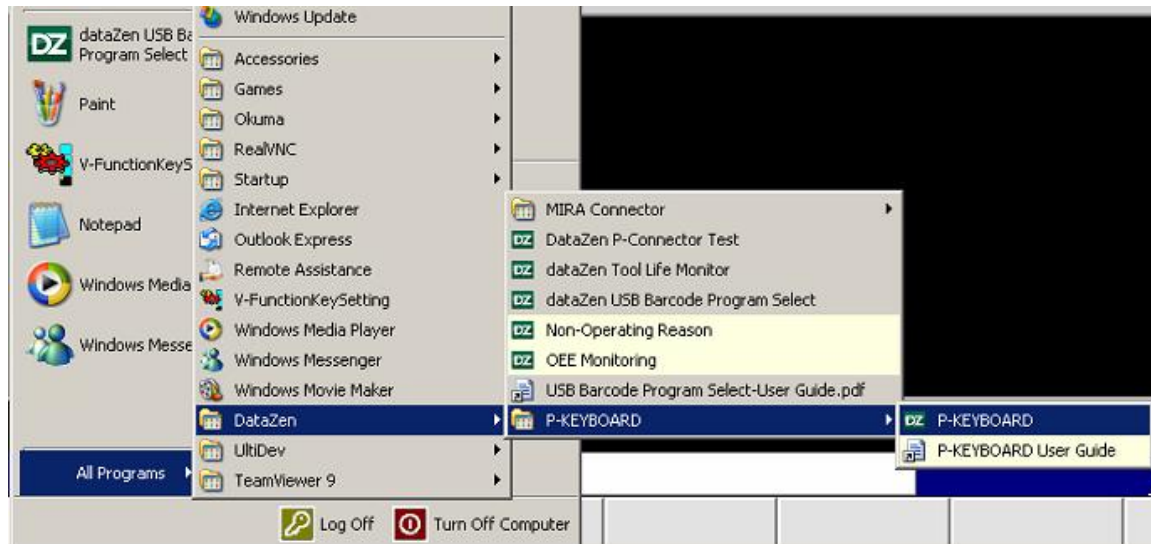
### 2.3 Launching P-KEYBOARD

1. Application can be launched by clicking on Vertical menu and click on “P-Keyboard” on vertical panel as shown in the below figure.



**Figure 10: Launching P-KEYBOARD-1**

2. Go to “Start→Programs→DataZen →P-KEYBOARD→P-KEYBOARD.

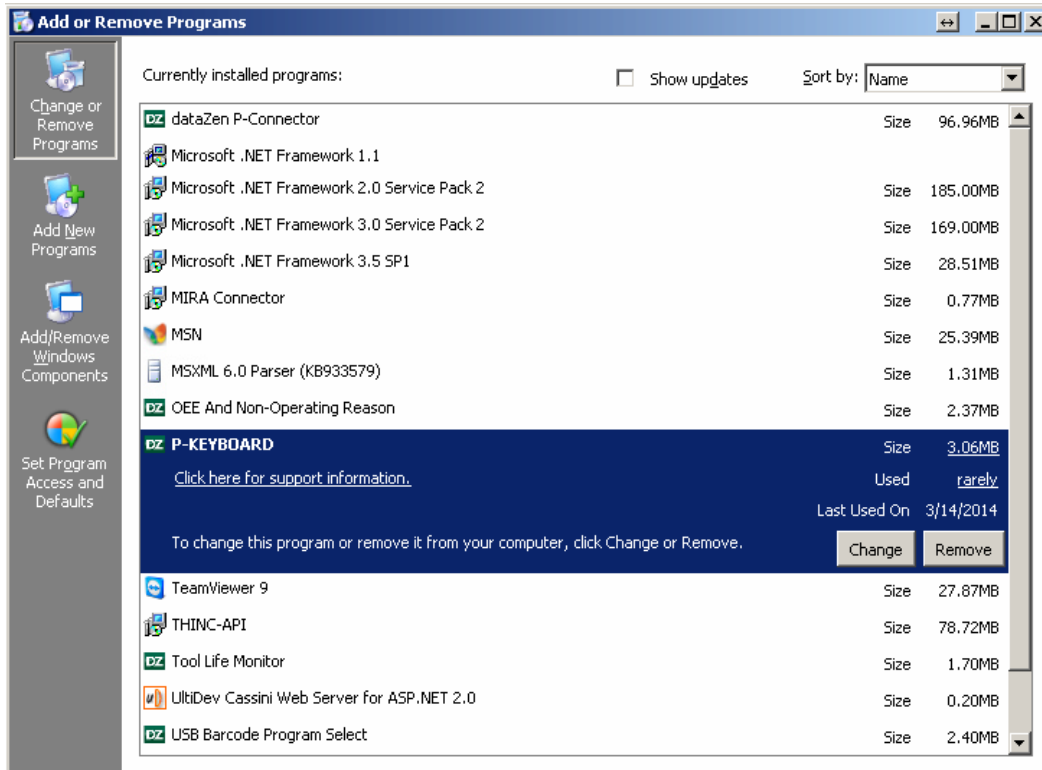


**Figure 11: Launching P-KEYBOARD-2**

**Note:** For the first time use application will be provided with 30 days trial license, once the trial license expired, follow the licensing, please refer to [Section 4.1](#) License for details

## 2.4 Un-Installation Process

1. To Un-Install the P-KEYBOARD go to “Start→Programs→Settings→Control Panel.
2. Click on Add or Remove Programs and select P-KEYBOARD from the list and click on remove.



**Figure 12: Uninstall- P-KEYBOARD**

3. The Application should uninstall normally.

### 3 Using P-KEYBOARD

Section in this document explains step by step information to use P-KEYBOARD on the control.

#### 3.1 QWERTY Keyboard

QWERTY keyboard helps the operator to type any words, numbers and special character by simply touching on the screen.

1. To open the QWERTY Keyboard please click on the “alphabets” shown on the application window as shown in the below figure.

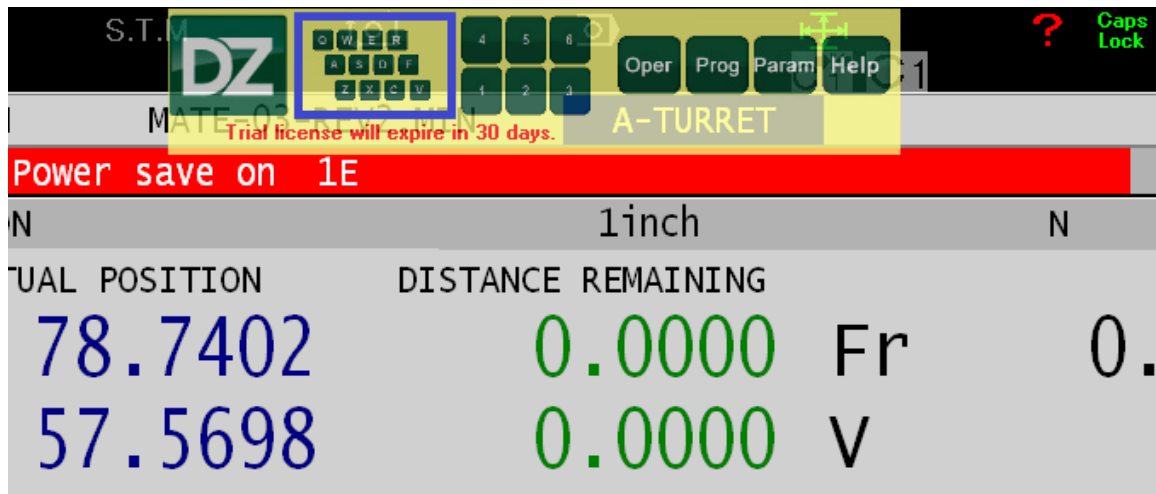


Figure 13: Main Page

2. QWERTY keyboard will opened up in new window as shown in the figure below.



Figure 14: QWERTY Keyboard

3. Click on 'X' on the top right corner to close the QWERTY keyboard.

### 3.2 Numeric Keypad

Numeric keypad helps operator to enter or change the values on the machine.

1. Click on the numeric box on the application window to open the numeric keypad.

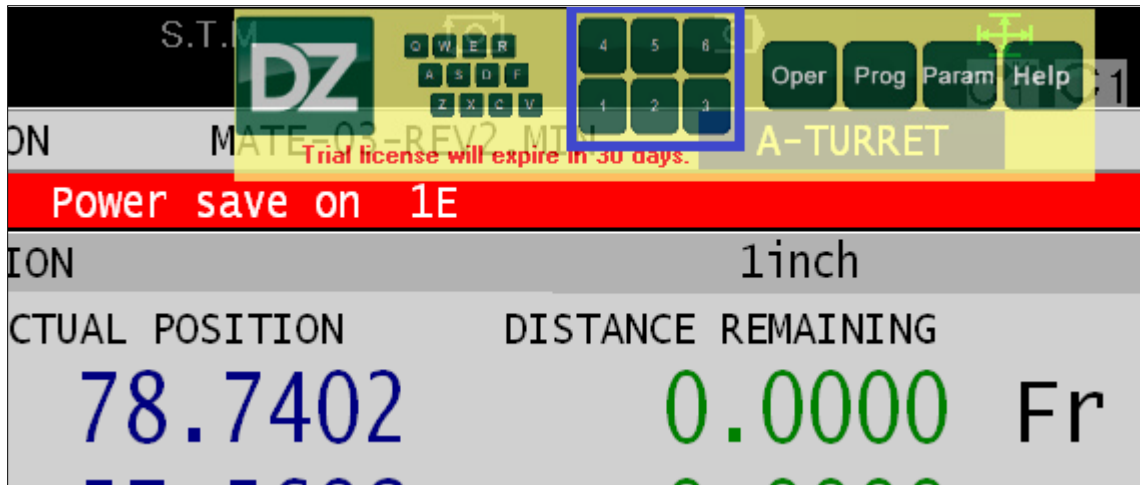


Figure 15: Numeric Keyboard-1

2. Numeric keypad will open in new window as shown in the below figure.

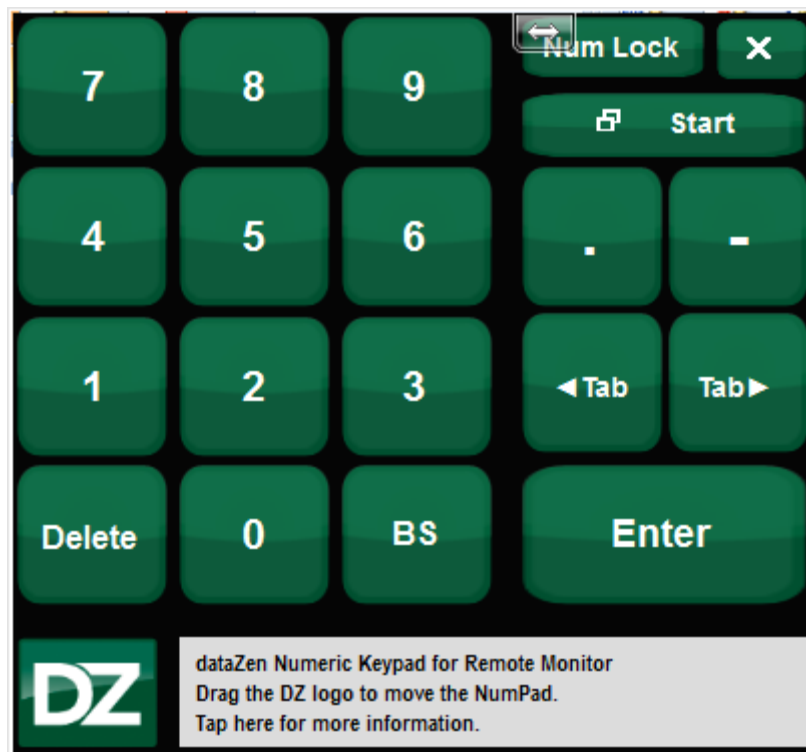


Figure 16: Numeric Keyboard- 2

- Click on 'X' in the top right corner to close the Numerical Keypad.

### 3.3 Quick Operational Keys

Quick operational keys helps operator to quickly shift to another window of the machine.

- Operation:** To navigate NC operation mode window of the machine click on "Operation" key on the screen.



Figure 17: Operational Keys- Operation mode

- Program:** To Navigate program list folder window of the machine click on "Program" Key on the screen.



Figure 18: Operational Keys- Program List

- **Param:** To navigate NC parameter screen window of the machine click on “Param” key on the screen.



Figure 19: Operational Keys- Parameter window

- **Zero:** To Navigate Zero point window of the machine click on “Zero” key on the screen.



Figure 20: Operational keys- Zero point



- **Tool Data:** Navigate to tool data window on the machine click on “Tool Data” key on the screen.



Figure 21: Operational Keys- Tool data window

- **MacMan:** Navigate to MacMan HMI window click on “MacMan” key on the window.



Figure 22: Operational Keys- MacMan HMI

## 4 Help

User will be able to check application license validity, User manual and Application version details with Help button.

### 4.1 Licensing

#### 4.1.1 Get License

1. To Load a license click on “Help” and then click on “License”



Figure 23: Get License

2. Please click on “Get license” and email the “Hardware Id” shown in the box to dataZen at [licensing@datazenengineering.com](mailto:licensing@datazenengineering.com) email address.

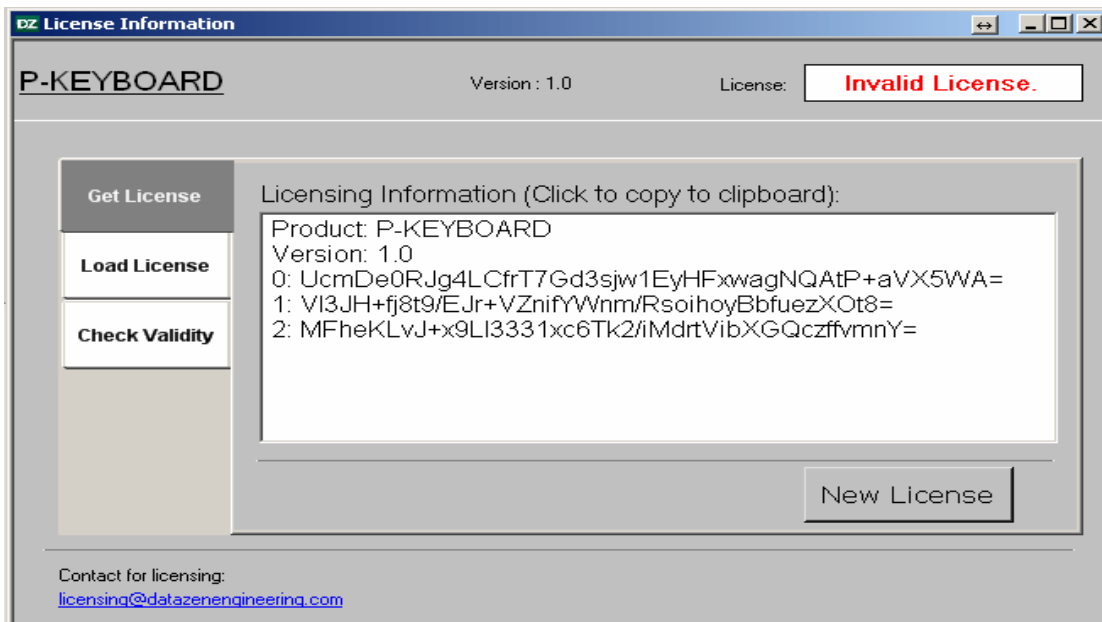


Figure 24: Get License- Copy hardware Id

#### 4.1.2 Load License

1. Once the license file received from dataZen click on “Load License” select the file and click on Open.

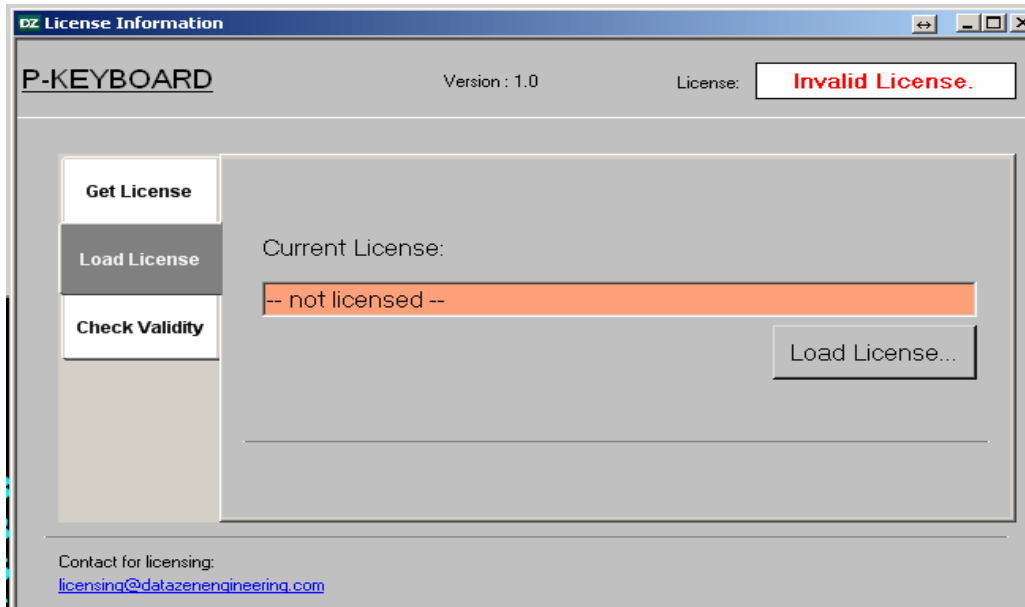


Figure 25: Load License

3. Once the license file loaded successfully restart the application.
4. To check the license validity click on “Check Validity” option.

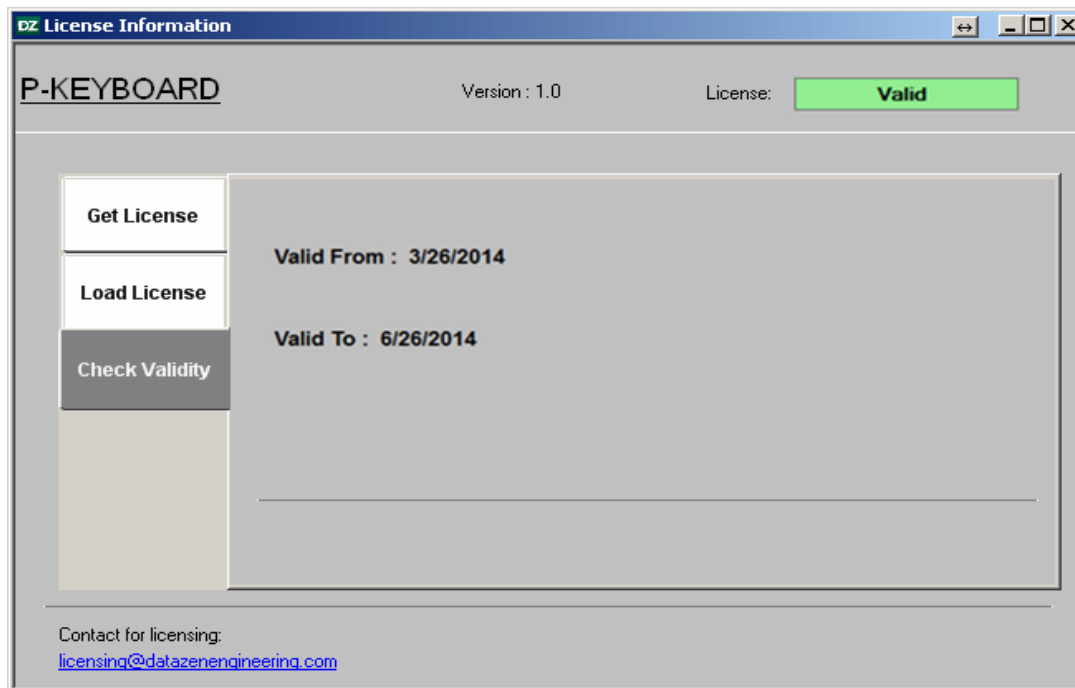
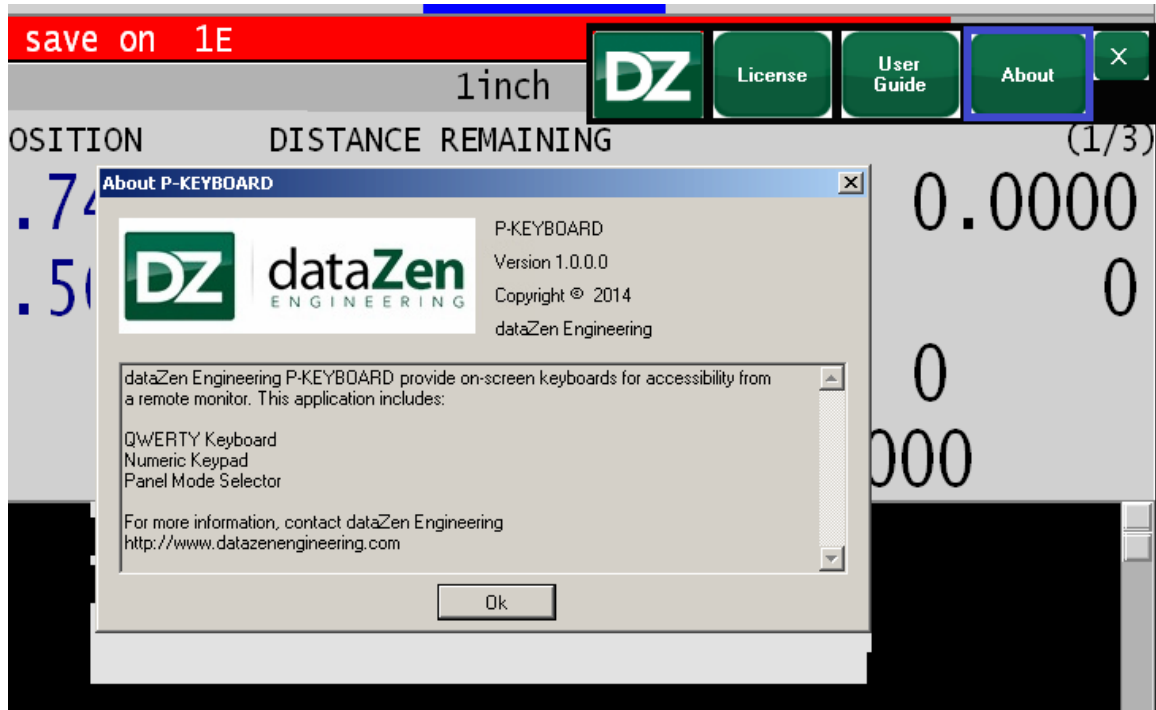


Figure 26: Check License Validity

## 4.2 About P-KEYBOARD

1. To check application details please click on Help and then click on “About” key as shown below.



## 5 Technical Support

The fastest method of contact dataZen is by email. Inquiries will be answered as soon as possible, typically within one business day.

- **For technical support or troubleshooting:**  
[support@dataZenEngineering.com](mailto:support@dataZenEngineering.com)
- **For inquiries about custom software development:**  
[dataZen@dataZenEngineering.com](mailto:dataZen@dataZenEngineering.com)
- **For sales related inquiries:**  
[sales@dataZenEngineering.com](mailto:sales@dataZenEngineering.com)
- **Other method of contact is Mail: dataZen engineering.**  
dataZen Engineering (Corporate Headquarters)  
5 W Hargett Street, Suite 200  
Raleigh, NC 27601, USA.